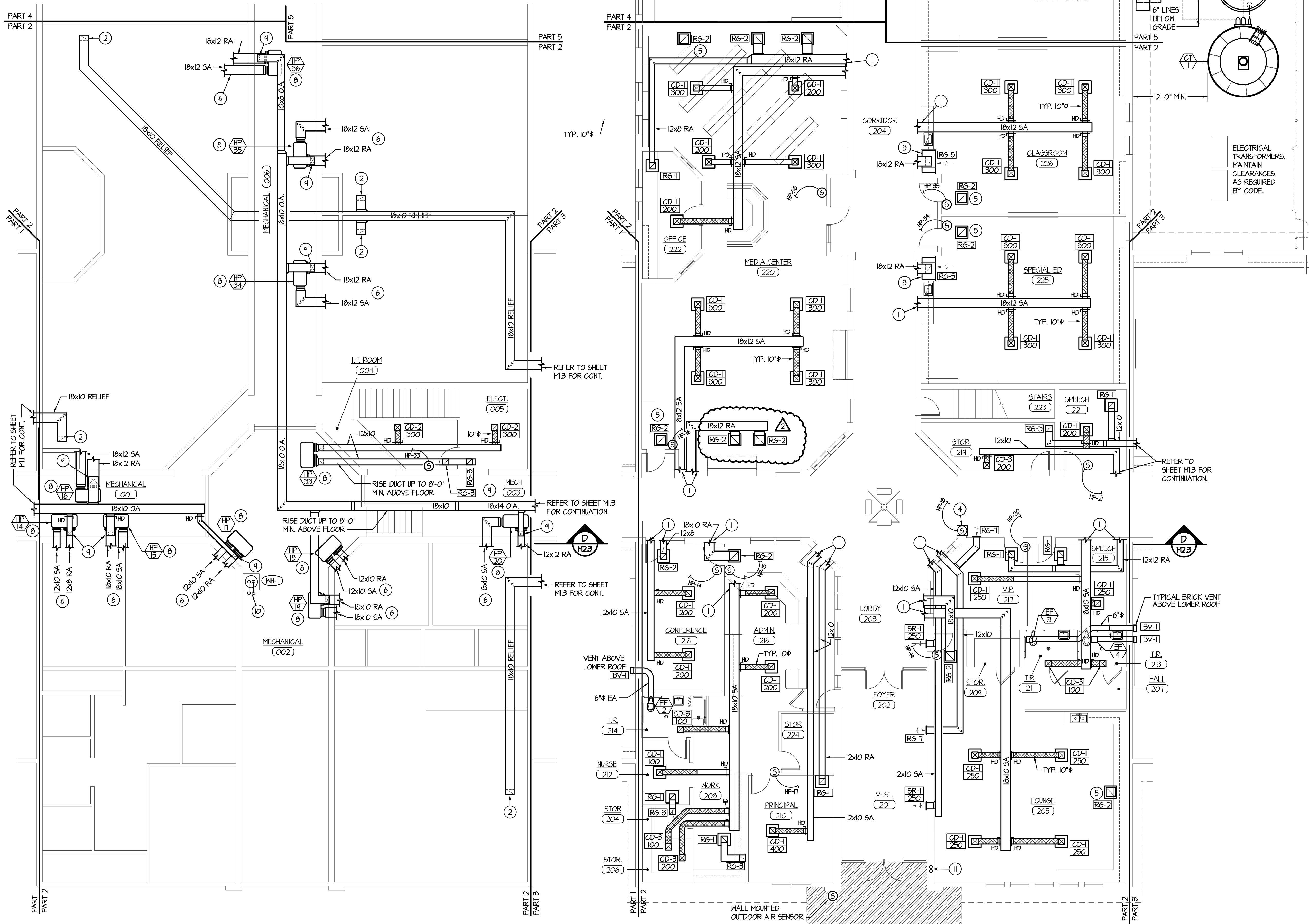
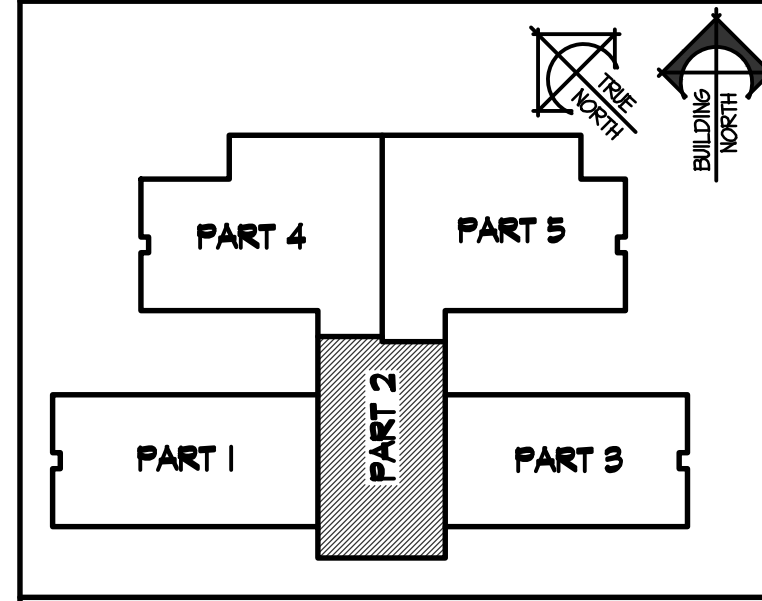


3/4/2019 2:58:19 PM F:\18\18070 Jefferson Co. Elem (Rigby)\18070-M1.2.dwg



- PLAN NOTES:**
- SEE MEZZANINE LEVEL PLAN - THIS SHEET FOR CONTINUATION OF DUCTWORK.
 - CONNECT 18x10 RELIEF AIR DUCT TO GRILLE IN CEILING. RUN RELIEF DUCT THRU CEILING SPACE AS SHOWN TO CORRESPONDING HEAT RECOVERY UNIT.
 - MOUNT RETURN GRILLE OVER CABINET IN FURRED SPACE AS LOW AS POSSIBLE. INSTALL 24" DEEP FLENNM BEHIND RETURN AIR GRILLE. RISE RETURN AIR DUCT OFF THE TOP OF FLENNM AND RUN TO HEAT PUMP ON MEZZANINE MECHANICAL WALKWAY.
 - PROVIDE LOCKING METAL COVER OVER SENSORS IN PUBLIC AREAS. COORDINATE LOCATION OF SENSORS IN CORRIDORS WITH COAT RACKS, BULLETIN BOARDS AND OTHER ITEMS BEING INSTALLED. FIELD VERIFY EXISTING CONDITIONS.
 - RELIEF AIR GRILLE FOR CLASSROOM. COORDINATE LOCATION WITH CEILING GRID AND LIGHT FIXTURES. REFER TO UPPER LEVEL FLOOR PLAN FOR DUCTWORK CONNECTIONS.
 - SEE MAIN LEVEL FLOOR PLAN - THIS SHEET FOR CONTINUATION OF DUCTWORK.
 - 8'-0" DIAMETER BY 8'-0" DEEP CONCRETE SUMP. CONCENTRIC CONE AND MANHOLE ACCESS TO BE INSTALLED BY SITE CONTRACTOR. MECHANICAL CONTRACTOR TO FURNISH AND INSTALL VERTICAL TURBINE PUMPS AND METAL SUPPORT FRAME INSIDE SUMP. REFER TO DETAILS FMB.1 AND HMB.1 FOR INSTALLATION OF PUMPS AND SUPPORT FRAME.
 - HANG HEAT PUMPS FROM TRUSSES 36" ABOVE MECHANICAL CORRIDOR FLOOR. INSTALL DRIP PAN BELOW EACH UNIT. (TYPICAL) SEE DETAIL CMB.2
 - DROP OUTSIDE AIR DUCT DOWN AND CONNECT TO RETURN AIR DUCT. PROVIDE MANUAL BALANCING DAMPER IN EACH OUTSIDE AIR DUCT CONNECTION. REFER TO OUTSIDE AIR REQUIREMENT SCHEDULE (SHEET MB.4) FOR DUCT SIZES TO INDIVIDUAL HEAT PUMPS.
 - PLUMBING CONTRACTOR TO INSTALL WATER HEATER ON MEZZANINE FLOOR WITH SHEET METAL DRAIN PAN. COORDINATE LOCATION WITH OTHER EQUIPMENT AND PIPING. SEE DETAIL B/P.13 FOR PIPING CONNECTIONS AND DRAIN PAN. CONNECT 3/4" HOT AND COLD WATER LINES TO PIPING AT FLOOR. REFER TO SHEET PL.2 FOR CONTINUATION OF WATER PIPING.
 - DROP 3/4" SNOW MELT SUPPLY AND RETURN LINES DOWN IN WALL TO SNOW MELT LOOP IN ENTRY WAY. REFER TO SHEET M1.8 FOR CONTINUATION OF SNOW MELT PIPING AND ZONE VALVE ON MEZZANINE LEVEL. REFER TO DETAIL C/M.2.2 FOR TYPICAL LOOP LAYOUT AND INSTALLATION IN CONCRETE WALKS. (NO MANIFOLD IS REQUIRED FOR THIS ZONE.)

KEY PLAN



ORIGINAL DRAWING SIGNED BY: DWAYNE C. SUDWEEKS
 DATE ORIGINAL SIGNED: Feb 08, 2019
 ORIGINAL ON FILE AT ENGINEERED SYSTEMS ASSOCIATES
 1355 EAST CENTER, POCAATELLO, IDAHO 83201

Engineered Systems Associates
 1355 EAST CENTER
 POCAATELLO, IDAHO 83201
 PHONE: (208) 233-0501
 FAX: (208) 233-0529
 EMAIL: esa@engsystems.com
 ESA JOB NUMBER: 18070

PROFESSIONAL ENGINEER
 REGISTERED
 5762
 STATE OF IDAHO
 DWAYNE C. SUDWEEKS

MEZZANINE LEVEL MECHANICAL FLOOR PLAN - PART 2
 SCALE: 1/8" = 1'-0"

MAIN LEVEL MECHANICAL FLOOR PLAN - PART 2
 SCALE: 1/8" = 1'-0"

nbw architects p.a.
 ARCHITECTURE / PLANNING / INTERIORS
 SCOTT L. NELSON, A.I.A. KEVIN R. BODILY, A.I.A. JAMES H. WYATT, A.I.A.
 990 JOHN ADAMS PARKWAY P.O. BOX 2212 - IDAHO FALLS, IDAHO 83402-2212
 (208) 208-522-8779 (F) 208-522-8785 (O) nbwarchitects.com

NEW ELEMENTARY SCHOOL FOR
JEFFERSON COUNTY SCHOOL DISTRICT 251
 ELEMENTARY SCHOOL
 RIGBY, IDAHO
 MECHANICAL FLOOR PLANS - PART 2

PROJECT NO. 18012
 DATE: FEBRUARY 2019
 DRAWN BY: M. JENSEN
 CHECKED BY: D. SUDWEEKS
 DRAWING NO.:

REVISIONS
 2-12-19 CONSTRUCTION SET
 ADDENDUM #1
 ADDENDUM #2
 ADDENDUM #3

M1.2