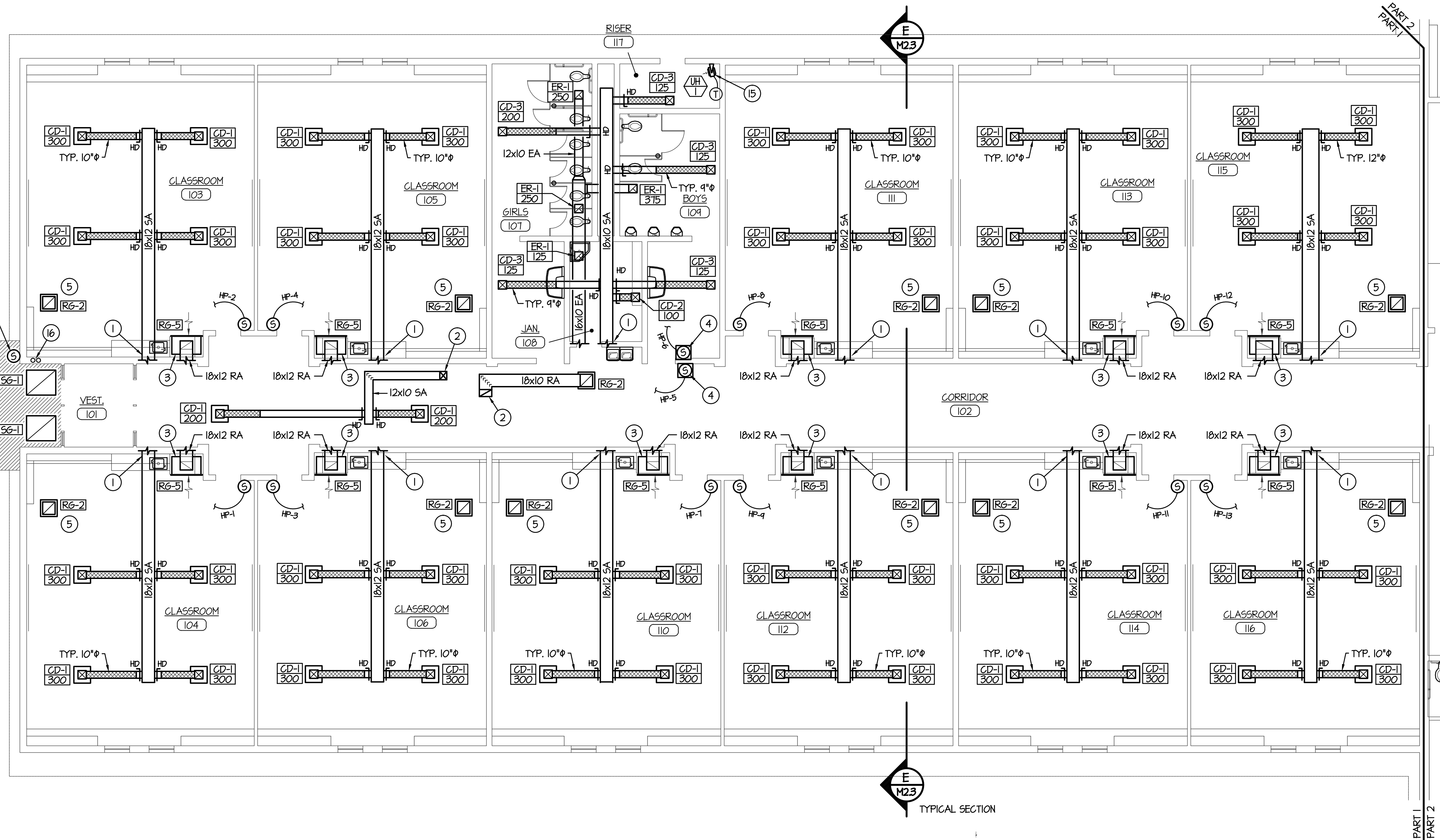
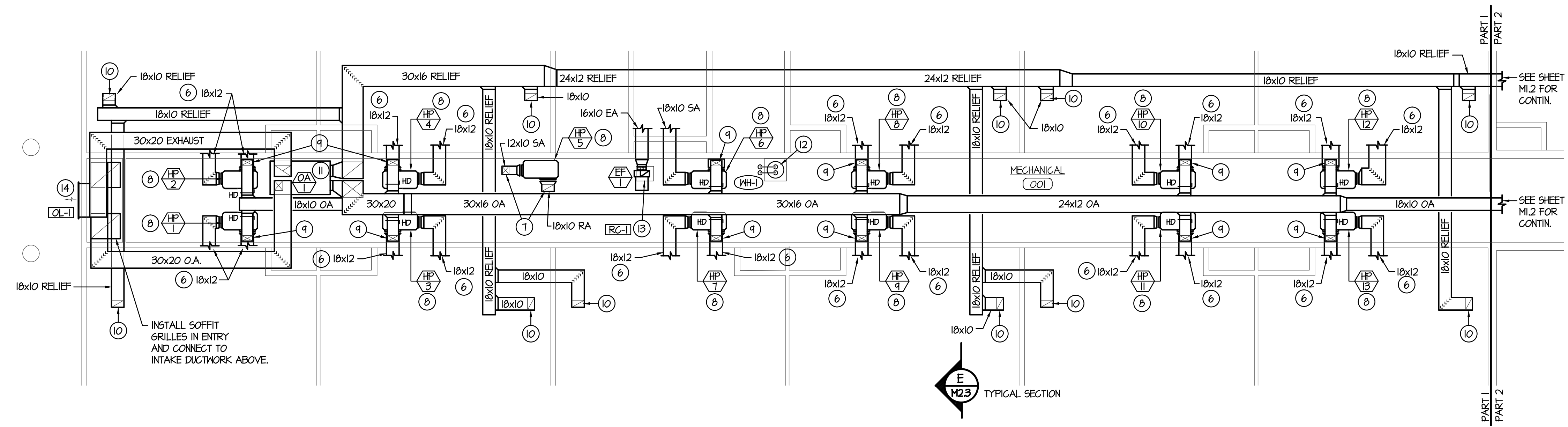
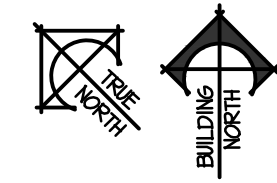


2/9/2019 9:30:49 AM F:\18\18070 Jefferson Co. Elem (Rigby)\18070-M1.dwg

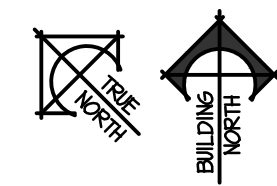
WALL MOUNTED OUTDOOR AIR SENSOR  
 MOUNT SENSOR IN CONCRETE TEKMAR MODEL 040 & 041.  
 PART I ENTRY ZONE  
 60 SQUARE FEET AREA  
 1 LOOP @ 40'  
 2 GPM TOTAL FLOW  
 9000 TOTAL BTU



**MAIN LEVEL MECHANICAL FLOOR PLAN - PART I**  
 SCALE: 1/8" = 1'-0"

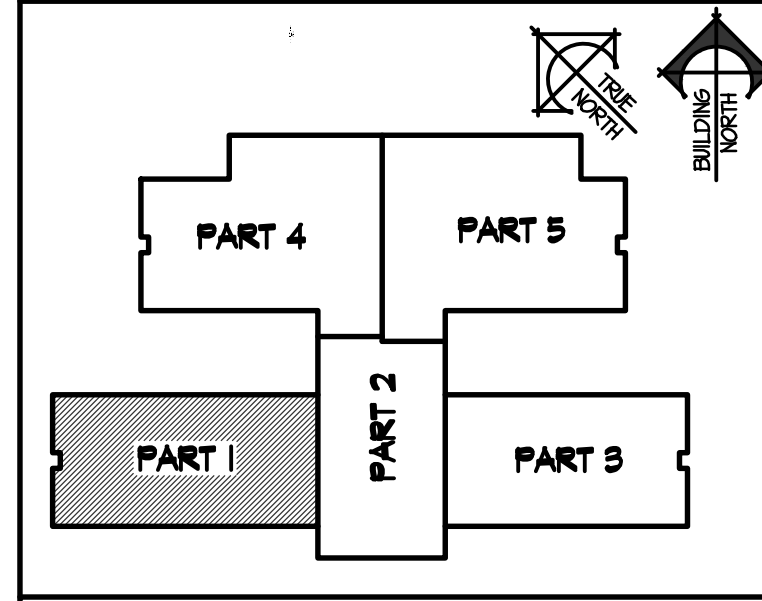


**MEZZANINE LEVEL MECHANICAL FLOOR PLAN - PART I**  
 SCALE: 1/8" = 1'-0"



- PLAN NOTES:**
- SEE MEZZANINE LEVEL PLAN - THIS SHEET FOR CONTINUATION OF DUCTWORK.
  - RISE DUCTWORK UP TO HEAT PUMP ABOVE. SEE MEZZANINE LEVEL PLAN - THIS SHEET FOR CONT.
  - MOUNT RETURN GRILLE OVER CABINET IN FURRED SPACE AS LOW AS POSSIBLE. INSTALL 24" DEEP PLENUM BEHIND RETURN AIR GRILLE. RISE RETURN AIR DUCT OFF THE TOP OF PLENUM AND RUN TO HEAT PUMP ON MEZZANINE MECHANICAL WALKWAY.
  - PROVIDE LOCKING METAL COVER OVER SENSORS IN PUBLIC AREAS. COORDINATE LOCATION OF SENSORS IN CORRIDORS WITH COAT RACKS, BULLETIN BOARDS AND OTHER ITEMS BEING INSTALLED. FIELD VERIFY EXISTING CONDITIONS.
  - RELIEF AIR GRILLE FOR CLASSROOM. COORDINATE LOCATION WITH CEILING GRID AND LIGHT FIXTURES. REFER TO UPPER LEVEL FLOOR PLAN FOR DUCTWORK CONNECTIONS.
  - SEE MAIN LEVEL FLOOR PLAN - THIS SHEET FOR CONTINUATION OF DUCTWORK.
  - DROP DUCTWORK DOWN THRU MECH. ROOM FLOOR. SEE MAIN LEVEL FLOOR PLAN FOR CONTINUATION.
  - HANG HEAT PUMPS FROM TRUSSES 36" ABOVE MECHANICAL CORRIDOR FLOOR. INSTALL DRIP PAN BELOW EACH UNIT. (TYPICAL) SEE DETAIL CMB.2
  - DROP OUTSIDE AIR DUCT DOWN AND CONNECT TO RETURN AIR DUCT. PROVIDE MANUAL BALANCING DAMPER IN EACH OUTSIDE AIR DUCT CONNECTION. REFER TO OUTSIDE AIR REQUIREMENT SCHEDULE (SHEET MB.4) FOR DUCT SIZES TO INDIVIDUAL HEAT PUMPS.
  - CONNECT 18x10 RELIEF AIR DUCT TO GRILLE IN CEILING. RUN RELIEF DUCT THRU CEILING SPACE AS SHOWN TO CORRESPONDING HEAT RECOVERY UNIT.
  - INSTALL HEAT RECOVERY UNIT ON DECK OF MEZZANINE LEVEL WITH VIBRATION ISOLATORS AT EACH CORNER. RISE DUCTWORK UP AND RUN OVER HEAD TO HEAT PUMPS, CLASSROOMS AND LOUVERS AS SHOWN. REFER TO TYPICAL DETAIL A/M2.2
  - PLUMBING CONTRACTOR TO INSTALL WATER HEATER ON MEZZANINE FLOOR WITH SHEET METAL DRAIN PAN. COORDINATE LOCATION WITH OTHER EQUIPMENT AND PIPING. SEE DETAIL B/P1.3 FOR PIPING CONNECTIONS AND DRAIN PAN. CONNECT 3/4" HOT AND COLD WATER LINES TO PIPING AT FLOOR. REFER TO SHEET P1.1 FOR CONTINUATION OF WATER PIPING.
  - RISE 18" DUCT UP TO ROOF AND CONNECT TO ROOF CAP. REFER TO DETAIL N/M3.2 FOR INSTALLATION OF ROOF CAP.
  - EXHAUST LOUVER TO BE 48x48 BASIC SIZE WITH TOP OF LOUVER SLOPED TO MATCH ROOF PITCH. (REFER TO ARCHITECTURAL ELEVATIONS.)
  - PROVIDE AND INSTALL UNIT HEATER AS SPECIFIED COMPLETE WITH WALL MOUNTING BRACKET. MOUNT AS HIGH AS POSSIBLE. REFER TO DETAIL L/M3.2
  - DROP 3/4" SNOW MELT SUPPLY AND RETURN LINES DOWN IN WALL TO SNOW MELT LOOP IN ENTRY WAY. REFER TO SHEET M1.0 FOR CONTINUATION OF SNOW MELT PIPING AND ZONE VALVE ON MEZZANINE LEVEL. REFER TO DETAIL C/M2.2 FOR TYPICAL LOOP LAYOUT AND INSTALLATION IN CONCRETE WALKS. (NO MANIFOLD IS REQUIRED FOR THIS ZONE.)

**KEY PLAN**



ORIGINAL DRAWING SIGNED BY: DWAYNE C. SUDWEEKS  
 DATE ORIGINAL SIGNED: Feb 08, 2019  
 ORIGINAL ON FILE AT ENGINEERED SYSTEMS ASSOCIATES  
 1355 EAST CENTER, POCAATELLO, IDAHO 83201

**Engineered Systems Associates**  
 1355 EAST CENTER  
 POCAATELLO, IDAHO 83201  
 PHONE: (208) 233-0501  
 FAX: (208) 233-0529  
 EMAIL: esa@engsystems.com  
 ESA JOB NUMBER: 18070

PROFESSIONAL ENGINEER  
 REGISTERED  
 5762  
 STATE OF IDAHO  
 DWAYNE C. SUDWEEKS

**nbw architects p.a.**  
 ARCHITECTURE / PLANNING / INTERIORS  
 SCOTT L. NELSON, AIA, KEVIN R. BODILY, AIA, JAMES H. WYATT, AIA  
 960 JOHN ADAMS PARKWAY, P.O. BOX 2212 - IDAHO FALLS, IDAHO 83402-2212  
 (P) 208-522-8779 (F) 208-522-8785 (W) nbwarchitects.com

**NEW ELEMENTARY SCHOOL FOR  
 JEFFERSON COUNTY SCHOOL DISTRICT 251  
 ELEMENTARY SCHOOL  
 RIGBY, IDAHO**

**MECHANICAL FLOOR PLANS - PART I**

PROJECT NO. 18012  
 DATE: FEBRUARY 2019  
 DRAWN BY: M. JENSEN  
 CHECKED BY: D. SUDWEEKS  
 DRAWING NO.:

REVISIONS  
 2-12-19 CONSTRUCTION SET

SHEET TITLE: **M1.1**