

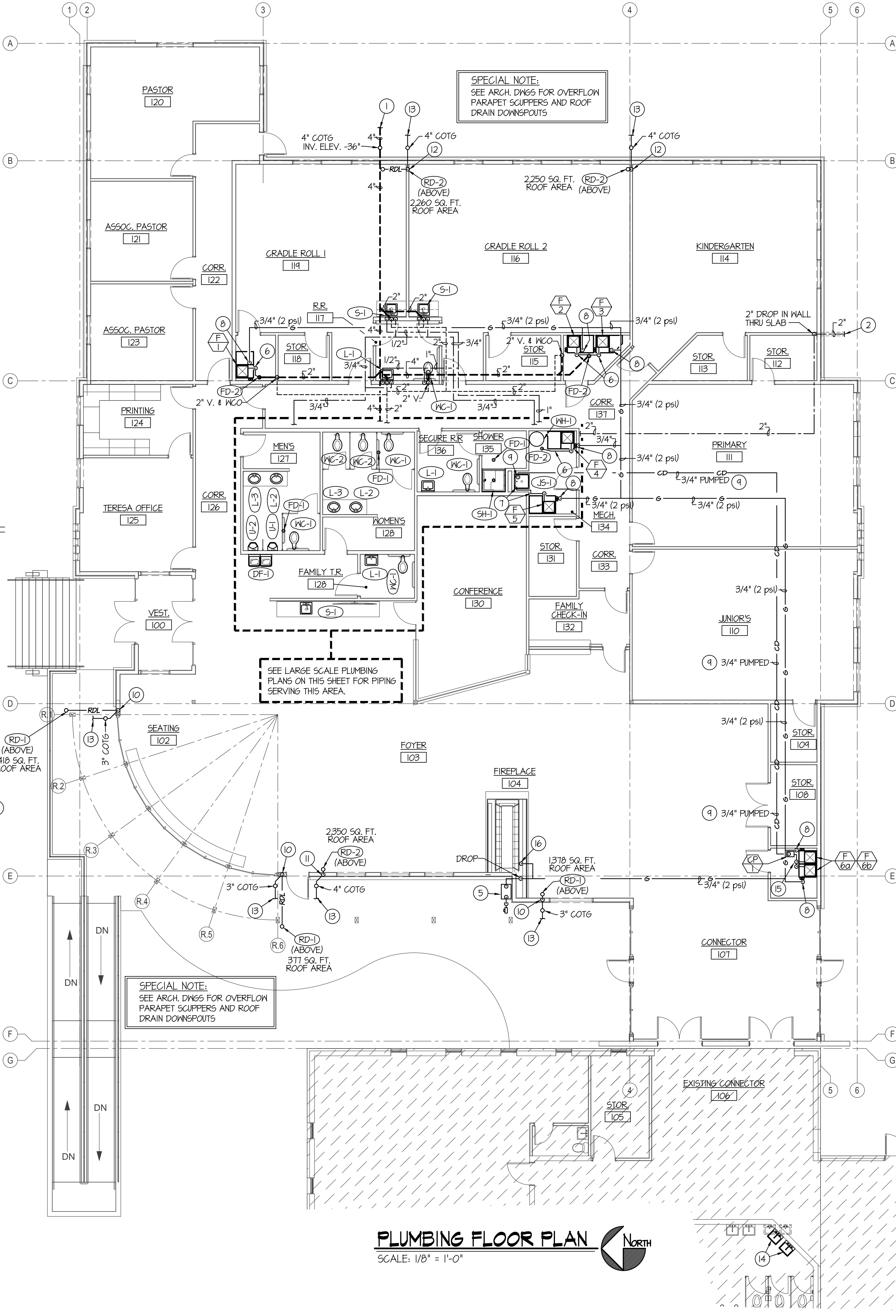
PLAN NOTES:

- 1 SEE CIVIL SITE PLAN FOR CONTINUATION OF 4" SANITARY SEWER MAIN CONNECTING TO NEW SEWER MAIN.
- 2 SEE CIVIL SITE PLAN FOR CONTINUATION OF 2" DOMESTIC CW MAIN CONNECTING TO NEW WATER MAIN.
- 3 SEE PLUMBING FLOOR PLAN FOR CONTINUATION OF PIPING.
- 4 2" DOMESTIC CW PRESSURE REDUCING VALVE ASSEMBLY. SEE DETAIL ON SHEET P200.
- 5 GAS METER BY LOCAL GAS COMPANY SIZED FOR 100,000 BTU AT 2 PSI DELIVERY PRESSURE.
- 6 RUN 3/4" CONDENSATE DRAIN LINE FROM FURNACE AND DX COOLING COIL DOWN AND ACROSS FLOOR TO FLOOR DRAIN. TERMINATE WITH 90° ELBOW COMPLETE WITH AIRGAP.
- 7 RUN 3/4" CONDENSATE DRAIN LINE FROM FURNACE AND DX COOLING COIL TO JANITOR SINK LOCATED ON FLOOR. TERMINATE IN SINK WITH 90° ELBOW COMPLETE WITH AIRGAP.
- 8 DROP 3/4" (2 PSI) GAS LINE DOWN FROM CEILING SPACE TO FURNACE IN MECH. ROOM. INSTALL 2 PSI TO OZ. REGULATOR SIZED FOR BTU LOAD OF ACTUAL FURNACE SUPPLIED. VENT REGULATOR TO THE EXTERIOR. INSTALL SHUT-OFF VALVE, FLEXIBLE CONNECTION AND DIRT LEG ON 3/4" OZ. GAS LINE CONNECTING TO FURNACE. SEE DETAIL ON SHEET P200.
- 9 RISE 3/4" PUMPED CONDENSATE DRAIN LINE UP INTO WARM CEILING SPACE AND RUN TO JANITOR SINK AS SHOWN. TERMINATE IN CORNER OF JANITOR SINK WITH AIR GAP.
- 10 DROP 3" ROOF DRAIN LINE DOWN IN STUD SPACE OF WALL THRU CONCRETE SLAB AND OUT TO 3" COTG ON EXTERIOR SIDE OF BUILDING AS SHOWN.
- 11 DROP 4" ROOF DRAIN LINE DOWN IN STUD SPACE OF INTERIOR WALL DOWN THRU CONCRETE SLAB AND OUT TO 4" COTG ON EXTERIOR SIDE OF BUILDING AS SHOWN.
- 12 DROP 4" ROOF DRAIN LINE IN STUD SPACE OF INTERIOR WALL DOWN THRU CONCRETE SLAB AND OUT TO 4" COTG ON EXTERIOR SIDE OF BUILDING AS SHOWN.
- 13 SEE CIVIL SITE PLAN FOR CONTINUATION OF UNDERGROUND ROOF DRAIN PIPING.
- 14 RELOCATE EXISTING LAVATORY TO NEW ANGLED WALL. EXTEND EXISTING WASTE, WATER AND VENT PIPING AS REQUIRED FOR NEW LOCATION. FIELD VERIFY EXISTING CONDITIONS. INSTALL NEW 1/2" P-TRAP, S.S. BRAIDED SUPPLIES AND BALL STOPS.
- 15 RUN 3/4" CONDENSATE DRAIN FROM TWINNED FURNACES F-6a AND F-6b TO CONDENSATE PUMP CP-1 ON FLOOR.
- 16 DROP 3/4" (2 PSI) GAS LINE DOWN IN WALL OF FIREPLACE AND CONNECT TO FIREPLACE. INSTALL 2 PSI TO OZ. REGULATOR SIZED FOR ACTUAL BTU LOAD OF FIREPLACE AND CONNECT TO FIREPLACE WITH 3/4" OZ. GAS LINE COMPLETE WITH SHUT-OFF VALVE, FLEXIBLE CONNECTION AND DIRT LEG.

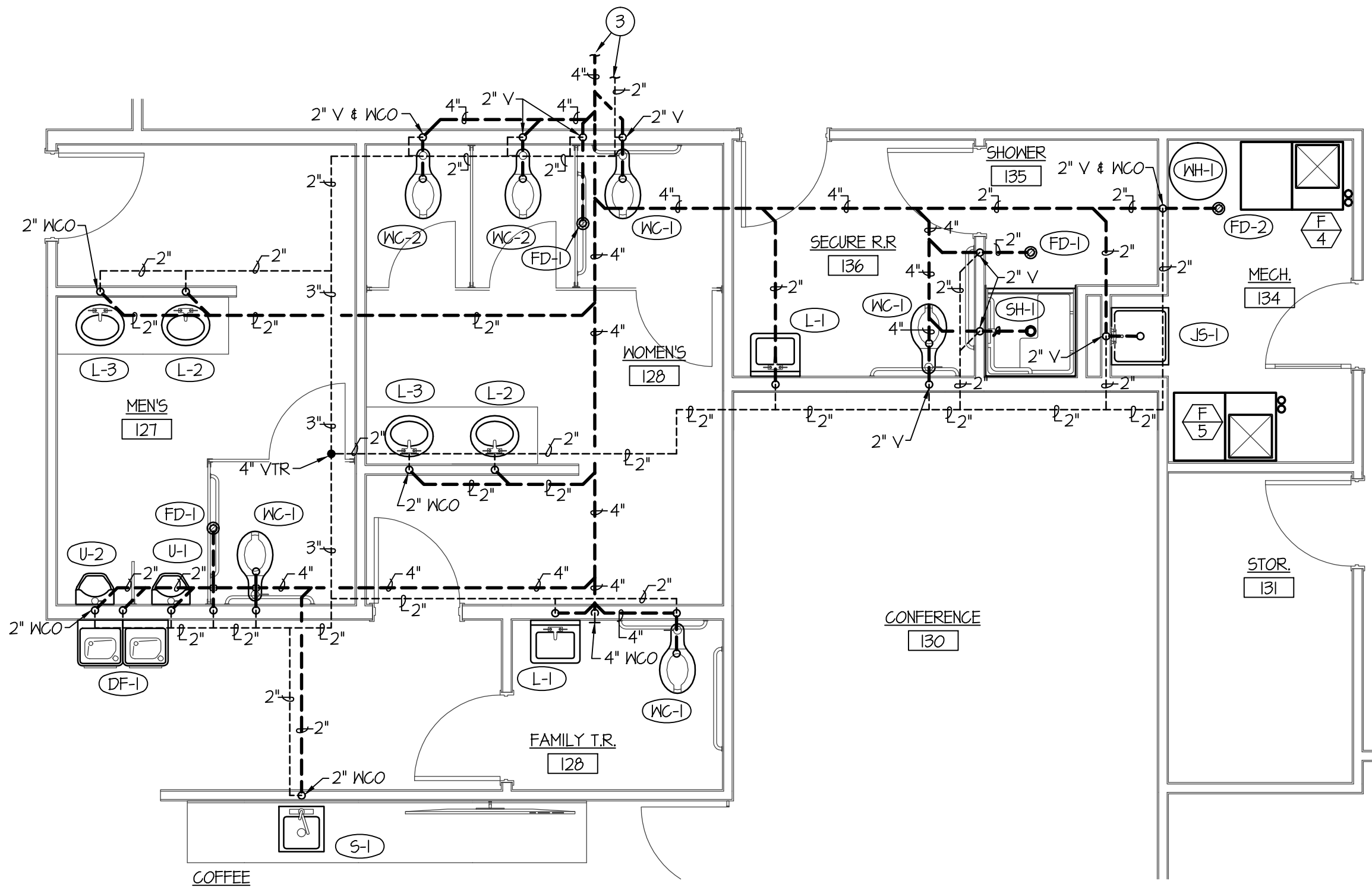
PLUMBING LEGEND

SYMBOL	DESCRIPTION
V	VENT
VTR	VENT THRU ROOF
CO	CLEANOUT
WCO	WALL CLEANOUT
COTG	CLEANOUT TO GRADE
—	PIPE DROP
—	PIPE RISE
—	BALL TYPE ISOLATION VALVE
—	SOIL OR WASTE PIPING
—	VENT LINE PIPING
—	DOMESTIC COLD WATER PIPING
—	DOMESTIC HOT WATER PIPING
—	HOT WATER REG. PIPING
G	GAS PIPING
GD	CONDENSATE DRAIN PIPING
RDL	ROOF DRAIN PIPING
RDO	ROOF OVERFLOW DRAIN PIPING

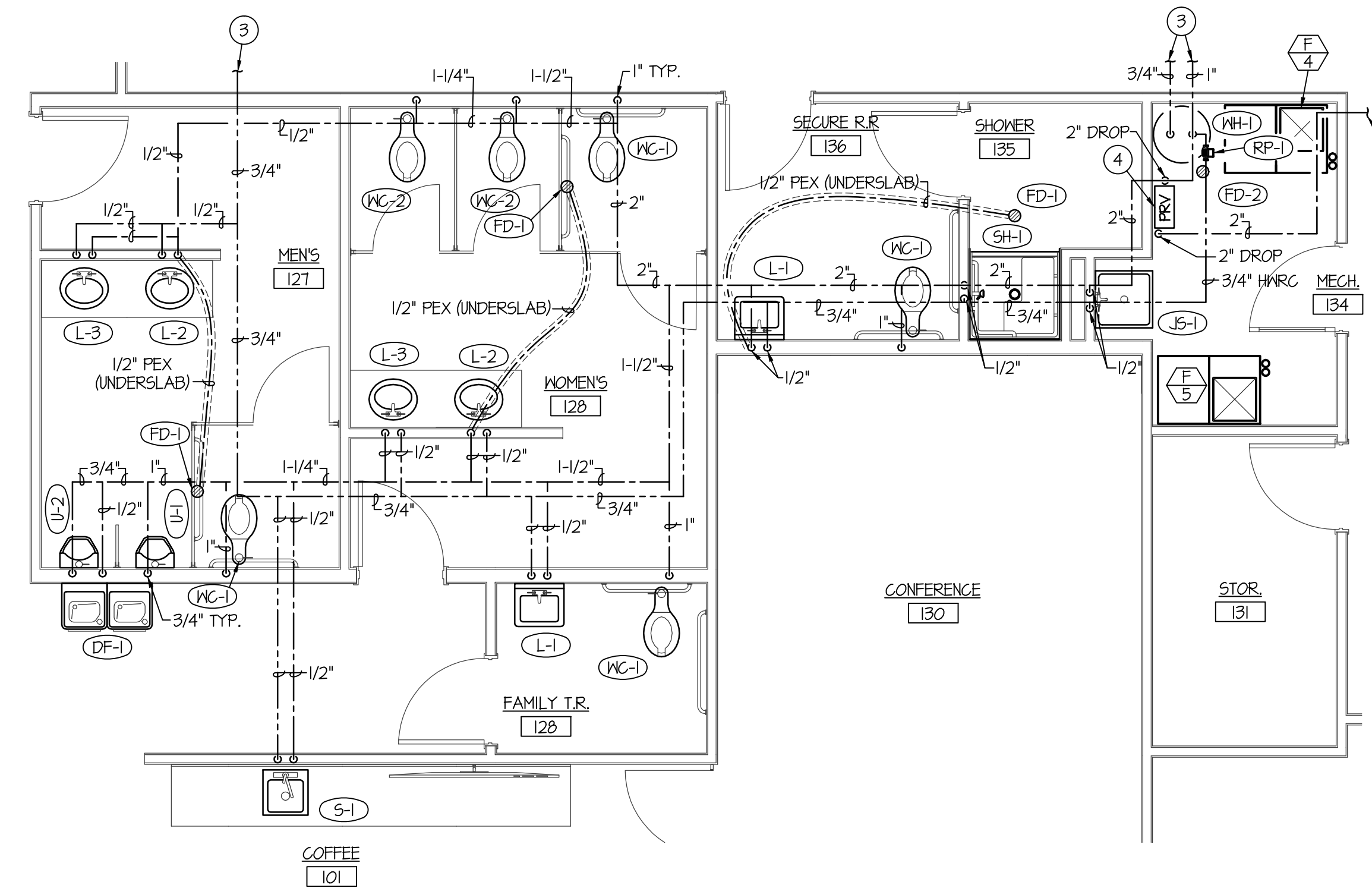
DWAYNE C. SUWICKI
 REGISTERED PROFESSIONAL ENGINEER
 STATE OF COLORADO
 458
 August 03, 2018
 Engined Systems Associates
 1355 EAST CENTER
 POCATELLO, IDAHO 83201
 PHONE: (208) 233-0501
 FAX: (208) 233-0529
 EMAIL: eso@engsystems.com
 ESA JOB NUMBER: 18039



PLUMBING FLOOR PLAN
SCALE: 1/8" = 1'-0"



LARGE SCALE WASTE & VENT PIPING FLOOR PLAN
SCALE: 1/4" = 1'-0"



LARGE SCALE WATER PIPING FLOOR PLAN
SCALE: 1/4" = 1'-0"