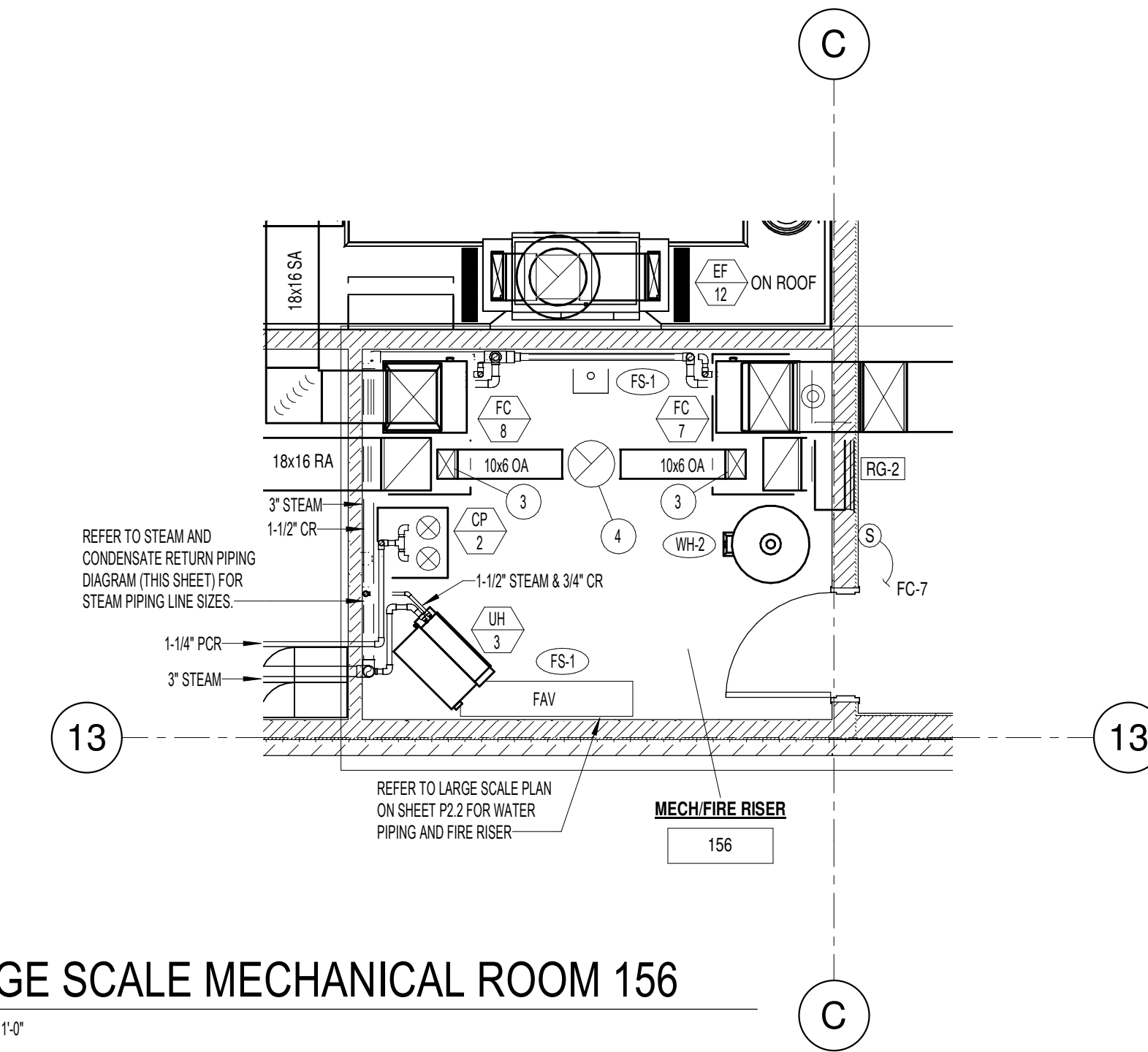
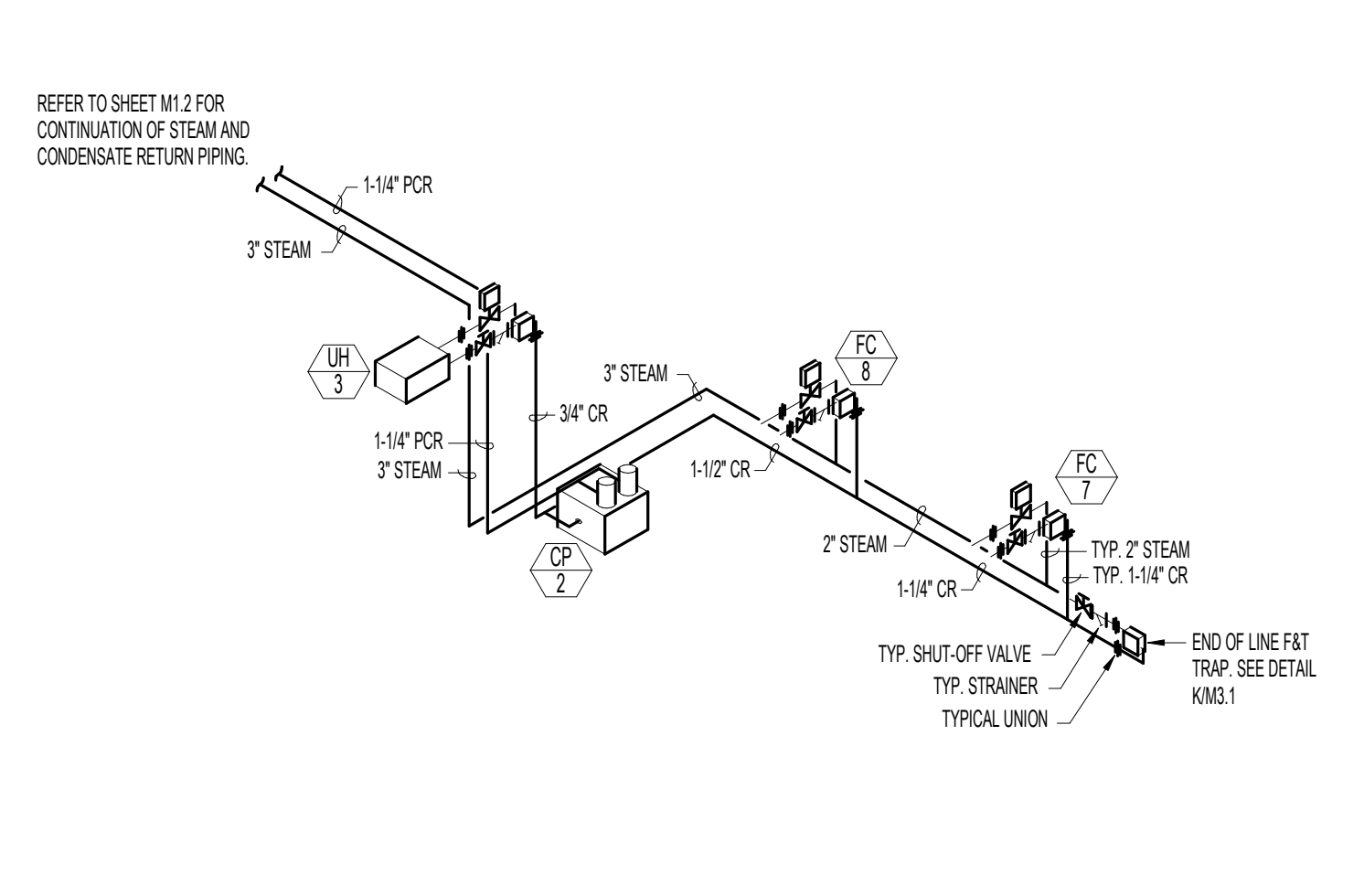
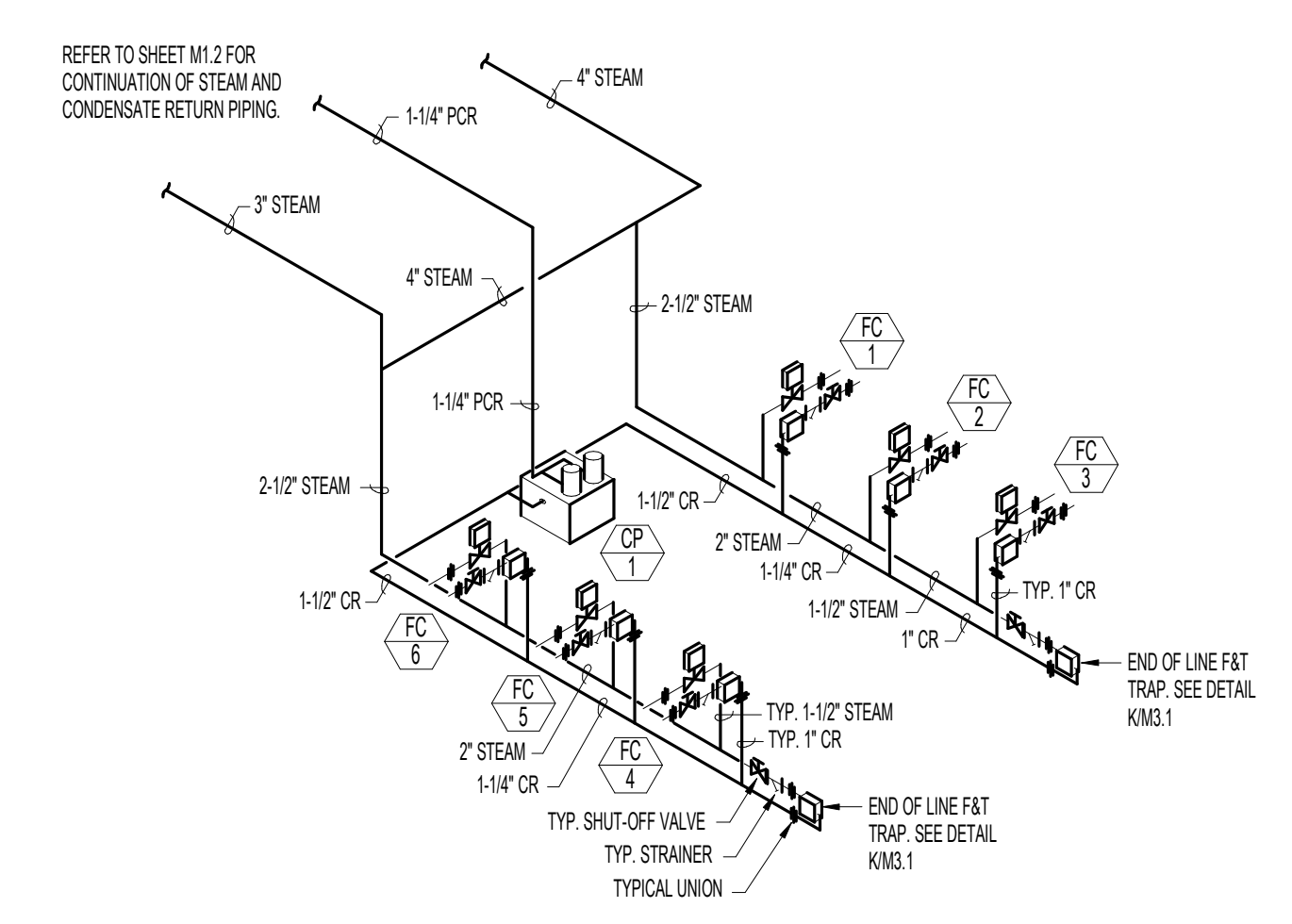
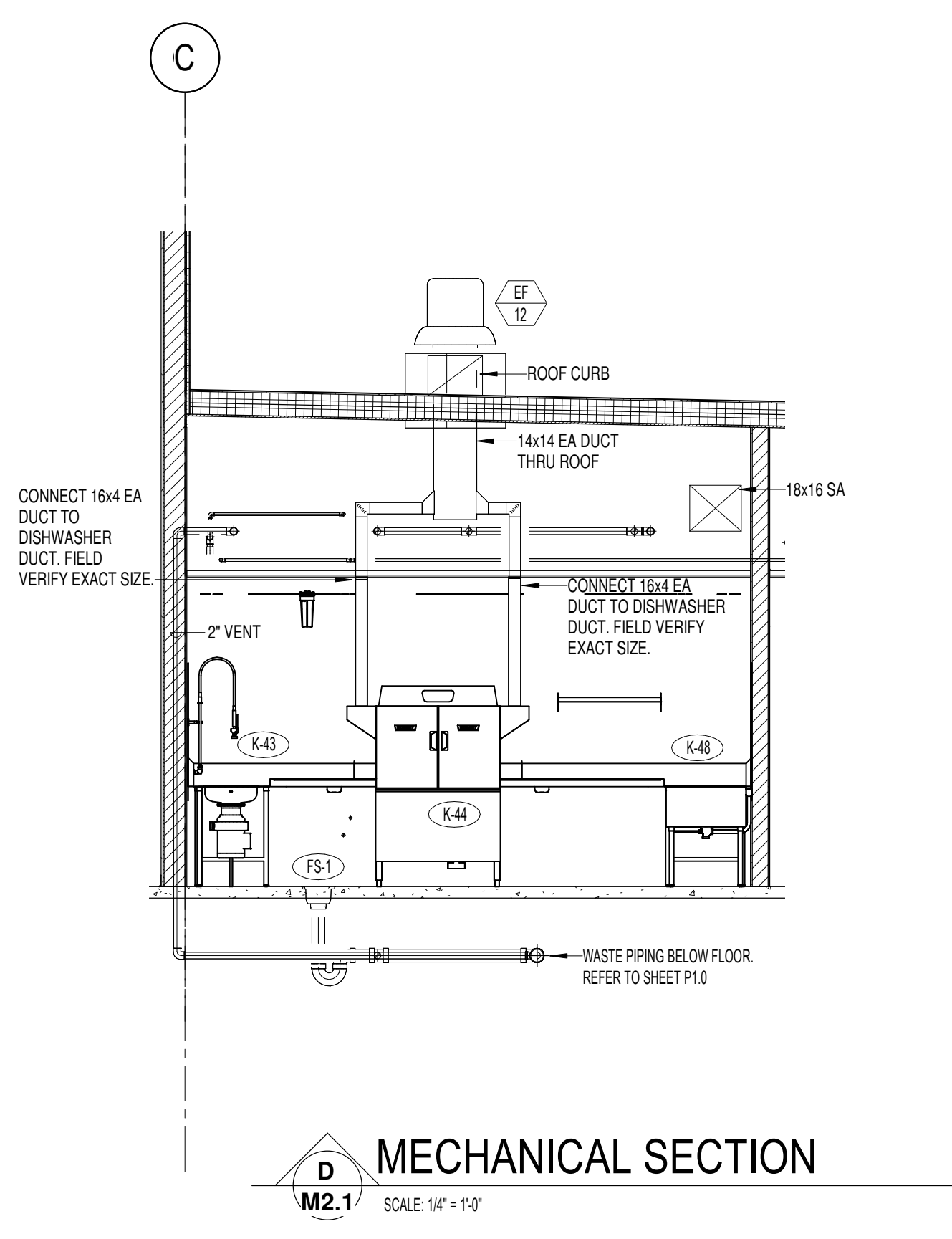
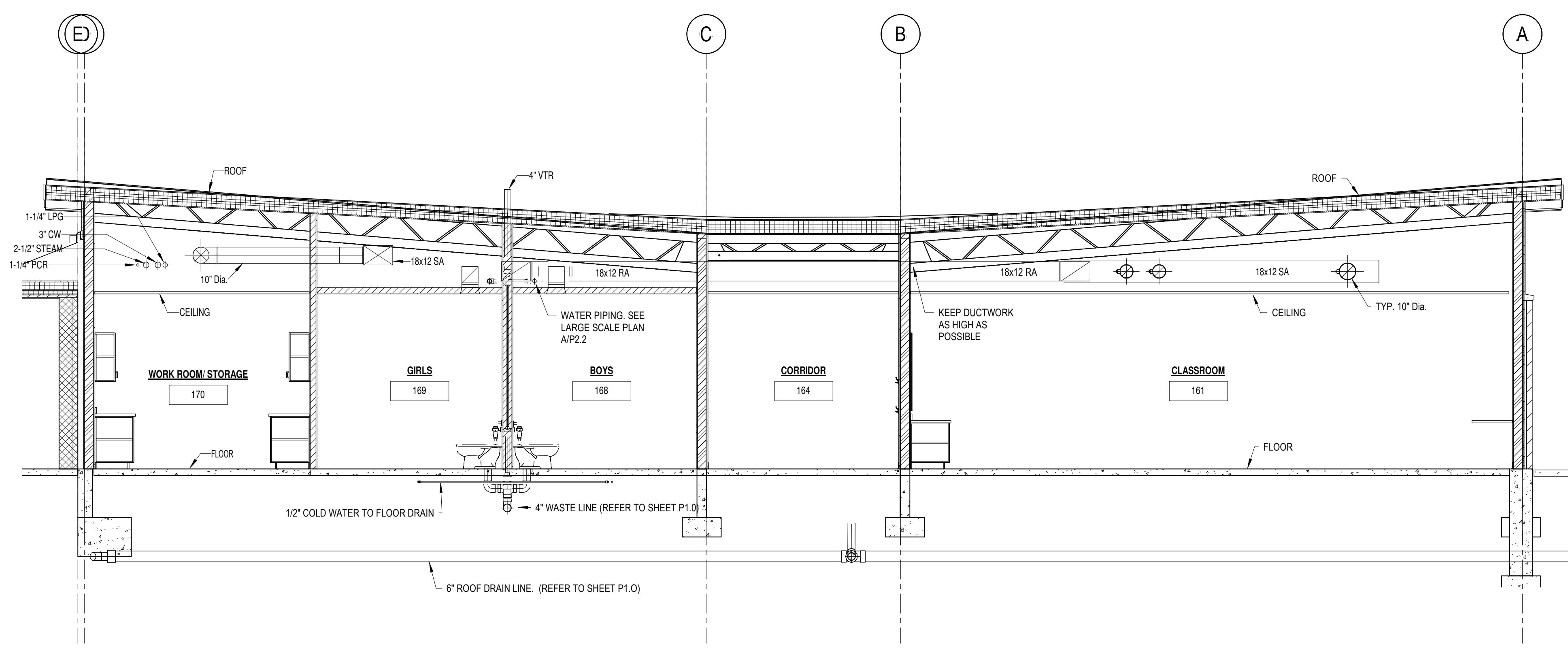
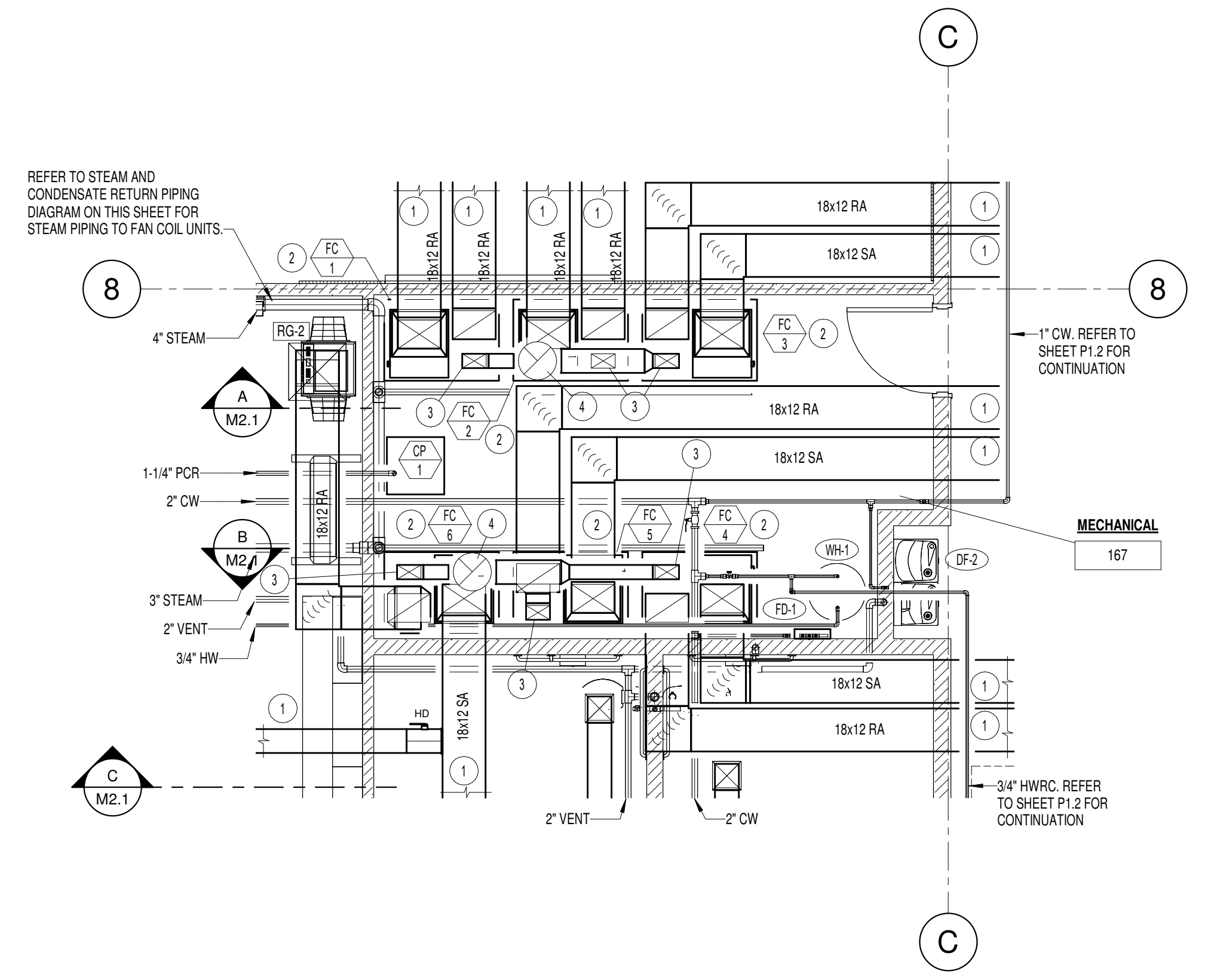
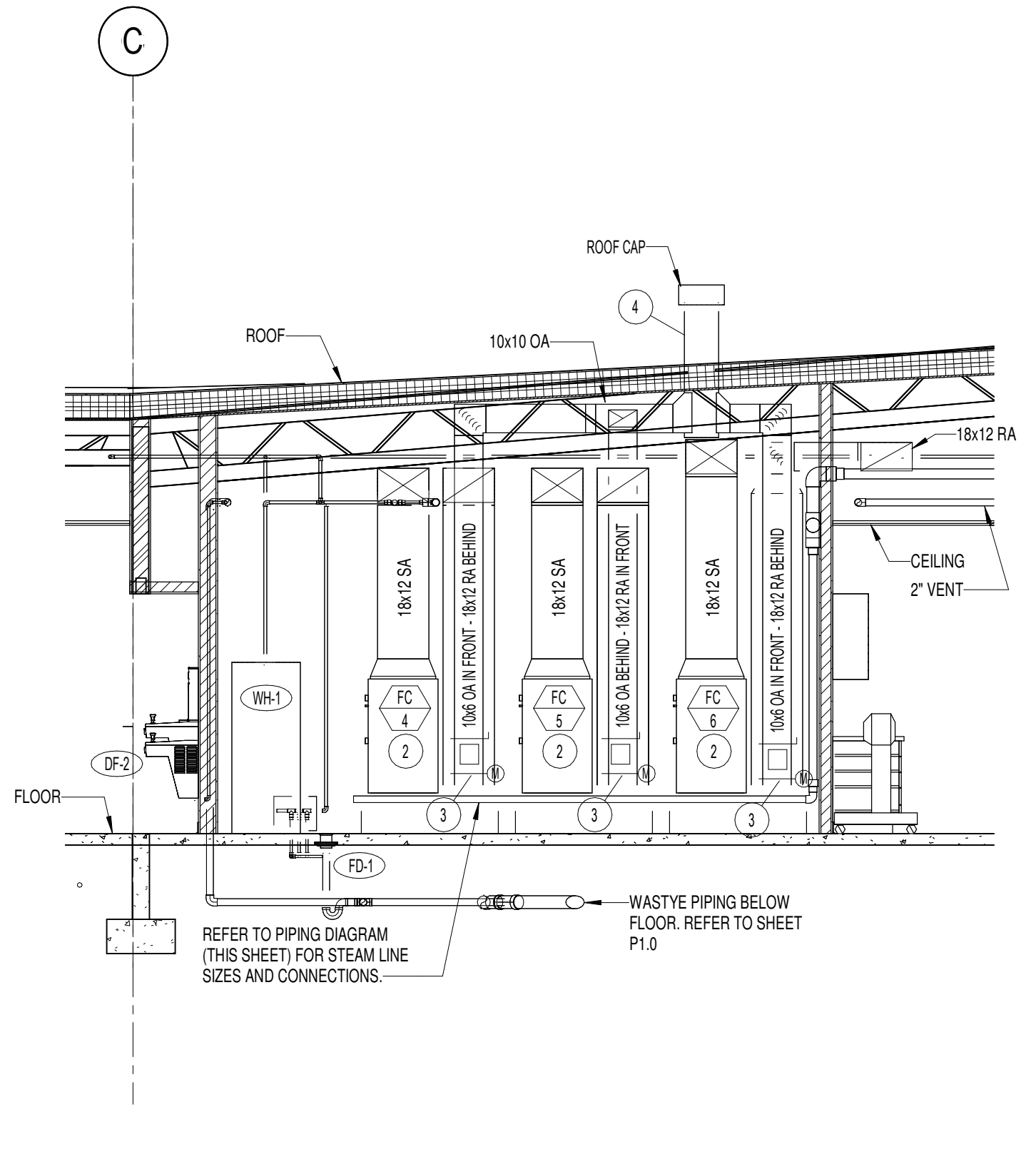
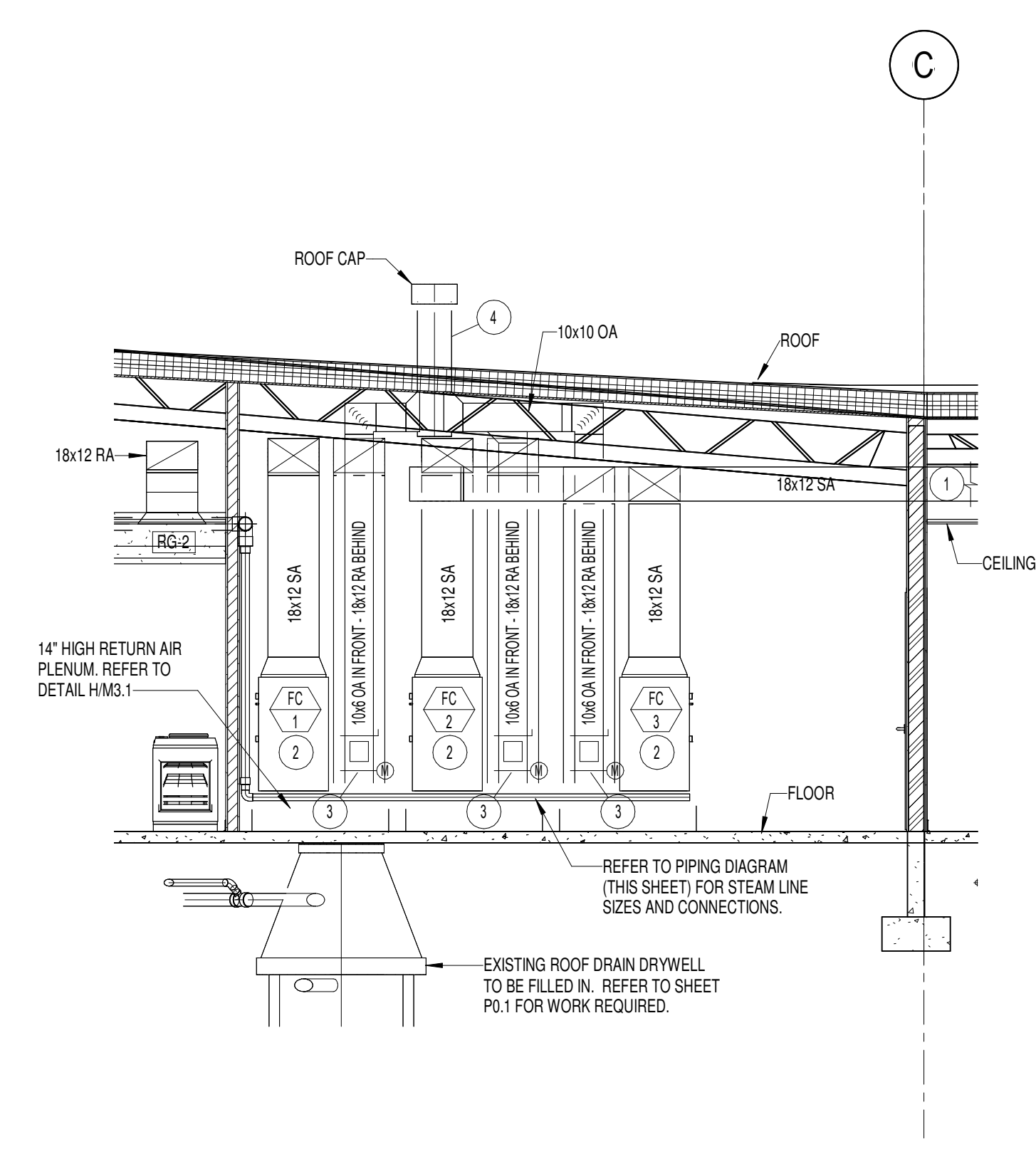


**PLAN NOTES:**

- 1 REFER TO SHEET M1.2 FOR CONTINUATION OF DUCTWORK.
- 2 PROVIDE AND INSTALL FAN COIL UNIT AS SPECIFIED COMPLETE WITH STEAM COIL MOUNT UNIT ON TOP OF 14" HIGH RETURN AIR PLENUM WITH EXTERNAL FILTER SECTION. REFER TO DETAILS 816.1 FOR PLENUM CONSTRUCTION, DETAIL 010.1 FOR PIPING AND DETAIL 010.3 FOR FILTER SECTION.
- 3 DROP 166 OUTSIDE AIR DUCT DOWN AND CONNECT TO TOP OF RETURN PLENUM. PROVIDE MOTORIZED DAMPER, DUCT ACCESS DOOR, AND MANUAL BALANCING DAMPER IN 106 DUCT. REFER TO DETAIL 010.1 FOR TYPICAL DAMPER INSTALLATION. REFER TO FAN COIL SCHEDULE FOR MAXIMUM OUTSIDE AIR REQUIRED.
- 4 RISE 12" DIA. OUTSIDE AIR DUCT UP THRU ROOF WITH ROOF CAP. SEAL ROOF PENETRATION WATER TIGHT.



Ownership & Use of Documents  
Drawings and specifications, as instruments of professional service are and shall remain the property of the architect. These documents are not to be used in whole or in part for any project or purpose whatsoever, without the prior specific written authorization of GPC Architects, LLC.

**Engineered Systems Associates**  
ESA JOB NUMBER 18007

revisions	no.	description	date

project: 1723  
date: 9/20/18  
LARGE SCALE MECH PLANS AND SECTIONS  
sheet: M2.1