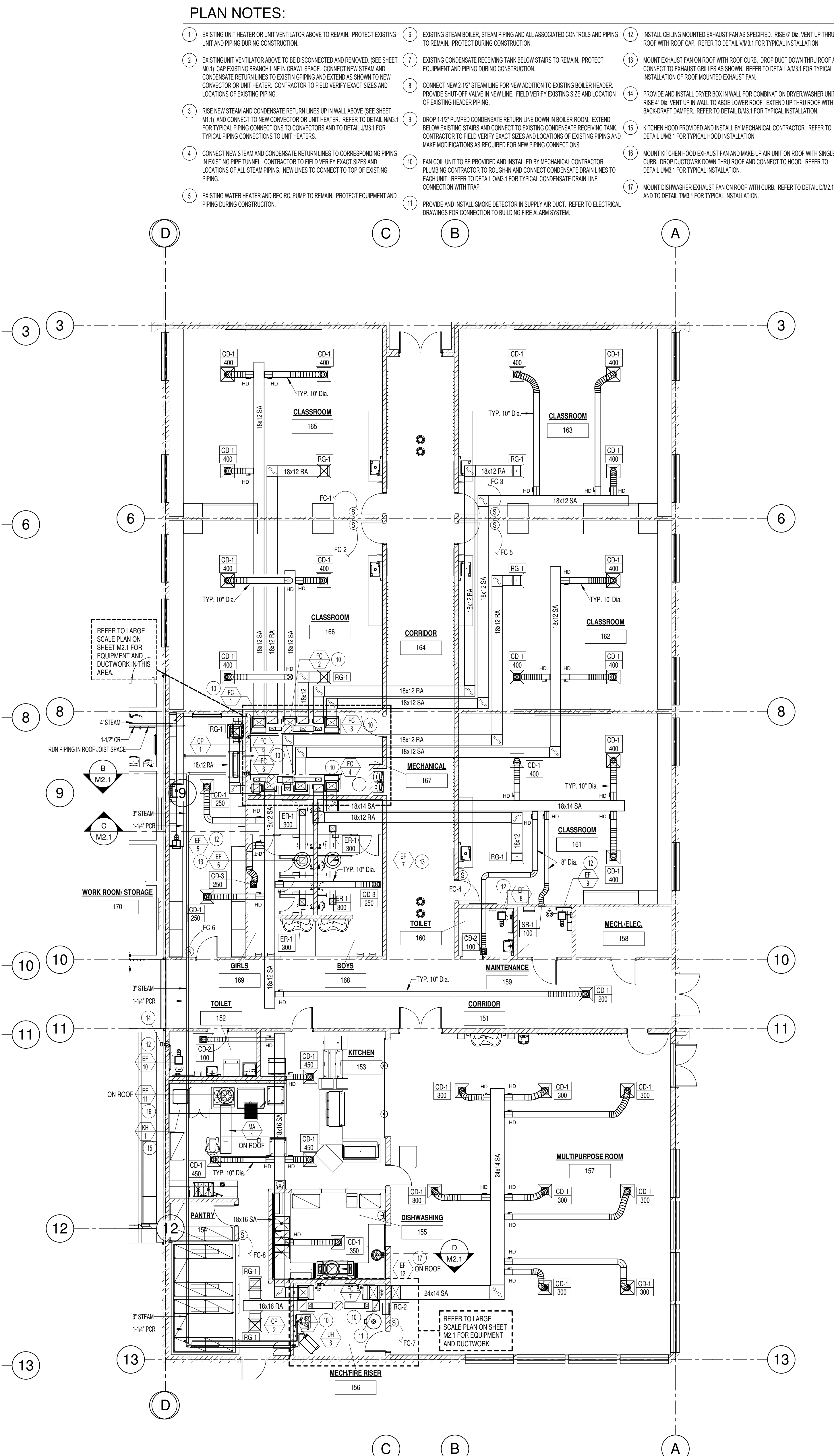


MECHANICAL FOUNDATION PLAN

SCALE: 1/8" = 1'-0"



ADDITION MECHANICAL FLOOR PLAN

SCALE: 1/8" = 1'-0"

PLAN NOTES:

- EXISTING UNIT HEATER OR UNIT VENTILATOR ABOVE TO REMAIN. PROTECT EXISTING UNIT AND PIPING DURING CONSTRUCTION.
- EXISTING UNIT VENTILATOR ABOVE TO BE DISCONNECTED AND REMOVED. (SEE SHEET M0.1) CAP EXISTING BRANCH LINE IN CRAWL SPACE. CONNECT NEW STEAM AND CONDENSATE RETURN LINES TO EXISTING PIPING AND SYSTEM AS SHOWN TO NEW CONNECTOR OR UNIT HEATER. CONTRACTOR TO FIELD VERIFY EXACT SIZES AND LOCATIONS OF EXISTING PIPING.
- RISE NEW STEAM AND CONDENSATE RETURN LINES UP IN WALL ABOVE (SEE SHEET M0.1) AND CONNECT TO NEW CONNECTOR OR UNIT HEATER. REFER TO DETAIL M0.1 FOR TYPICAL PIPING CONNECTIONS TO CONNECTORS AND TO DETAIL J0.1 FOR TYPICAL PIPING CONNECTIONS TO UNIT HEATERS.
- CONNECT NEW STEAM AND CONDENSATE RETURN LINES TO CORRESPONDING PIPING IN EXISTING PIPE TUNNEL. CONTRACTOR TO FIELD VERIFY EXACT SIZES AND LOCATIONS OF ALL STEAM PIPING. NEW LINES TO CONNECT TO TOP OF EXISTING PIPING.
- EXISTING WATER HEATER AND RECIRC. PUMP TO REMAIN. PROTECT EQUIPMENT AND PIPING DURING CONSTRUCTION.
- EXISTING STEAM BOILER, STEAM PIPING AND ALL ASSOCIATED CONTROLS AND PIPING TO REMAIN. PROTECT DURING CONSTRUCTION.
- EXISTING CONDENSATE RECEIVING TANK BELOW STAIRS TO REMAIN. PROTECT EQUIPMENT AND PIPING DURING CONSTRUCTION.
- CONNECT NEW 2 1/2" STEAM LINE FOR NEW ADDITION TO EXISTING BOILER HEADER. PROVIDE SHUT-OFF VALVE IN NEW LINE. FIELD VERIFY EXISTING SIZE AND LOCATION OF EXISTING HEADER PIPING.
- DROP 1 1/2" PUMPED CONDENSATE RETURN LINE DOWN IN BOILER ROOM. EXTEND BELOW EXISTING STAIRS AND CONNECT TO EXISTING CONDENSATE RECEIVING TANK. CONTRACTOR TO FIELD VERIFY EXACT SIZES AND LOCATIONS OF EXISTING PIPING AND MAKE MODIFICATIONS AS REQUIRED FOR NEW PIPING CONNECTIONS.
- FAN COIL UNIT TO BE PROVIDED AND INSTALLED BY MECHANICAL CONTRACTOR. PLUMBING CONTRACTOR TO ROUGH-IN AND CONNECT CONDENSATE DRAIN LINES TO EACH UNIT. REFER TO DETAIL D0.1 FOR TYPICAL CONDENSATE DRAIN LINE CONNECTION WITH TRAP.
- PROVIDE AND INSTALL SMOKE DETECTOR IN SUPPLY AIR DUCT. REFER TO ELECTRICAL DRAWINGS FOR CONNECTION TO BUILDING FIRE ALARM SYSTEM.
- INSTALL DELUGED MOUNTED EXHAUST FAN AS SPECIFIED. RISE 6" DIA. VENT UP THRU ROOF WITH ROOF CAP. REFER TO DETAIL V0.1 FOR TYPICAL INSTALLATION.
- MOUNT EXHAUST FAN ON ROOF WITH ROOF CURB. DROP DUCT DOWN THRU ROOF AND CONNECT TO EXHAUST GRILLES AS SHOWN. REFER TO DETAIL A0.1 FOR TYPICAL INSTALLATION OF ROOF MOUNTED EXHAUST FAN.
- PROVIDE AND INSTALL DRYSER BOX IN WALL FOR COMBINATION DRYER/WASHER UNIT. RISE 4" DIA. VENT UP IN WALL TO ROOF LOWER ROOF. EXTEND UP THRU ROOF WITH BACKDRAFT DAMPER. REFER TO DETAIL D0.1 FOR TYPICAL INSTALLATION.
- KITCHEN HOOD PROVIDED AND INSTALLED BY MECHANICAL CONTRACTOR. REFER TO DETAIL U0.1 FOR TYPICAL HOOD INSTALLATION.
- MOUNT KITCHEN HOOD EXHAUST FAN AND MAKE-UP AIR UNIT ON ROOF WITH SINGLE CURB. DROP DUCTWORK DOWN THRU ROOF AND CONNECT TO HOOD. REFER TO DETAIL U0.1 FOR TYPICAL INSTALLATION.
- MOUNT DISHWASHER EXHAUST FAN ON ROOF WITH CURB. REFER TO DETAIL D0.1 AND TO DETAIL T0.1 FOR TYPICAL INSTALLATION.



TETON SCHOOL DISTRICT 401
RENDEZVOUS UPPER ELEMENTARY SCHOOL
ADDITIONS AND RENOVATIONS



revisions	no.	description	date

project: 1723
date: 9/20/2018
ADDITION MECHANICAL FLOOR PLAN
sheet: