

- PLAN NOTES:**
- 1) TWO EXISTING 2" COLD WATER LINES BELOW GRADE TO REMAIN. CONTRACTOR TO FIELD VERIFY EXACT SIZE AND LOCATION OF WATER LINES AND PROTECT DURING CONSTRUCTION. ALL WATER LINES UNDER NEW CONSTRUCTION TO BE REPLACED WITH NEW REFER TO NOTE #2.
 - 2) ALL EXISTING COLD WATER PIPING BELOW NEW CONSTRUCTION TO BE REPLACED WITH NEW. CONTRACTOR TO FIELD VERIFY EXACT SIZES AND LOCATIONS OF ALL EXISTING WATER LINES BELOW GRADE OR BELOW EXISTING FLOORS. PROVIDE NEW PIPING TO MATCH EXISTING LOCATIONS AND SIZES.
 - 3) DISCONNECT AND REMOVE EXISTING SHUT-OFF VALVE AND STOP AND WASTE VALVES FOR DOMESTIC WATER PIPING. REPLACE EXISTING COLD WATER LINES WITH NEW. REFER TO NOTE #2.
 - 4) PROVIDE (2) NEW SHUT-OFF VALVES WITH STOP AND WASTE VALVE IN EXISTING COLD WATER LINES BELOW GRADE. REFER TO DETAIL B/M1.2 FOR TYPICAL INSTALLATION.
 - 5) EXISTING 4" WASTE LINE BELOW GRADE TO REMAIN. CONTRACTOR TO FIELD VERIFY EXACT SIZE AND LOCATION OF EXISTING WASTE LINE AND PROTECT DURING CONSTRUCTION. ALL EXISTING WASTE LINES BELOW NEW CONSTRUCTION TO BE REPLACED WITH NEW. REFER TO NOTE #6.
 - 6) ALL EXISTING WASTE PIPING BELOW NEW CONSTRUCTION TO BE REPLACED WITH NEW. CONTRACTOR TO FIELD VERIFY EXACT SIZES AND LOCATIONS OF EXISTING PIPING BELOW GRADE OR BELOW EXISTING FLOORS. PROVIDE NEW PIPING TO MATCH EXISTING LOCATIONS, SIZES AND ELEVATION.

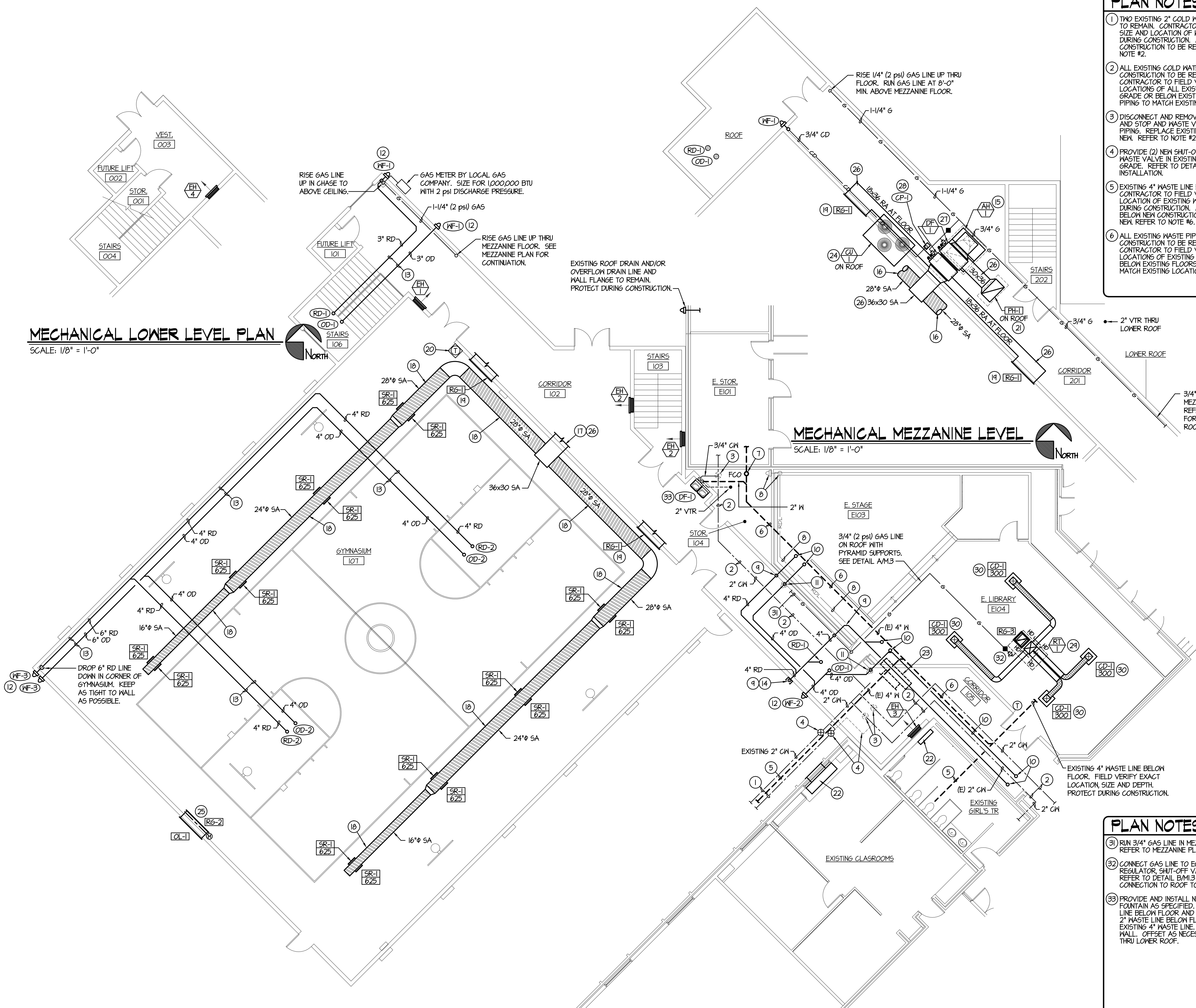
- PLAN NOTES:**
- 7) REPLACE EXISTING 4" CLEAN OUT TO GRADE WITH NEW 4" FLOOR CLEAN OUT. NEW CLEAN OUT TO BE FLUSH WITH NEW FLOOR. REFER TO NOTE #6 FOR REPLACEMENT OF ALL EXISTING WASTE PIPING UNDER AREAS OF NEW CONSTRUCTION.
 - 8) DISCONNECT AND REMOVE EXISTING 4" ROOF DRAIN LINE FROM ABOVE EXISTING CEILING, DOWN IN HALL AND OUT TO WALL FLANGE FOR NEW CONSTRUCTION. CONTRACTOR TO FIELD VERIFY EXACT SIZE AND LOCATION OF EXISTING LINE.
 - 9) INTERCEPT EXISTING 4" ROOF DRAIN LINE AT THIS POINT AND EXTEND OUT INTO NEW CONSTRUCTION. DROP 4" LINE DOWN IN MEZZANINE CORRIDOR TO ABOVE CEILING OF MAIN LEVEL CORRIDOR. EXTEND TO EXTERIOR WALL ABOVE MAIN LEVEL CORRIDOR CEILING. TERMINATE WITH 90° ELBOW INSIDE OPEN FACE GUTTER DOWN SPOUT.
 - 10) EXISTING ROOF DRAIN AND OVERFLOW DRAIN TO REMAIN. PROTECT DRAIN AND PIPING BELOW ROOF DRAIN DURING CONSTRUCTION. ALL EXISTING ROOF DRAIN AND OVERFLOW DRAIN PIPING TO REMAIN UNLESS NOTED OTHERWISE.
 - 11) REMOVE EXISTING WALL FLANGE FROM OVERFLOW DRAIN LINE. EXTEND EXISTING 4" DRAIN LINE THRU WALL OF NEW CONSTRUCTION AND DROP DOWN IN MEZZANINE CORRIDOR TO ABOVE CEILING OF MAIN LEVEL CORRIDOR. EXTEND TO EXTERIOR WALL ABOVE MAIN LEVEL CORRIDOR CEILING AND PROVIDE WALL FLANGE.
 - 12) PROVIDE NEW WALL FLANGE AS SPECIFIED FOR ROOF DRAIN TO 18" ABOVE GRADE. KEEP OVERFLOW DRAIN AS HIGH AS POSSIBLE.
 - 13) RUN ROOF DRAIN AND OVERFLOW DRAIN LINES THRU JOIST SPACE AS SHOWN. COORDINATE LINES WITH JOIST AND KEEP PIPING AS HIGH AS POSSIBLE.
 - 14) DOWN SPOUT GUTTER FURNISHED AND INSTALLED BY GENERAL CONTRACTOR. SEE ARCHITECTURAL DRAWINGS. COORDINATE WITH NEW ROOF DRAIN PIPING.
 - 15) PROVIDE AND INSTALL NEW VERTICAL AIR HANDLER AS SPECIFIED. MOUNT ON MEZZANINE FLOOR WITH VIBRATION ISOLATORS AT EACH CORNER. RISE SUPPLY DUCT UP AND CONNECT TO (2) DUCT FURNACES AND THEN EXTEND THRU GYMNASIUM WALL. PROVIDE DUCT TRANSITIONS AND REQUIRED TO MAKE ALL CONNECTIONS TO EQUIPMENT. PROVIDE SHEET METAL DRAIN PAN BELOW EQUIPMENT.
 - 16) REFER TO MAIN LEVEL MECHANICAL PLAN FOR CONTINUATION OF DUCTWORK.
 - 17) REFER TO MEZZANINE LEVEL MECHANICAL PLAN FOR CONTINUATION OF DUCTWORK.
 - 18) RUN SPIRAL SUPPLY DUCT THRU ROOF JOISTS AS SHOWN. COORDINATE DUCT LOCATION WITH ROOF JOISTS AND KEEP DUCTWORK UP AS HIGH AS POSSIBLE. MOUNT GRILLE IN DUCTWORK AT 45° OFF HORIZONTAL. REFER TO DETAIL G/M1.2 FOR TYPICAL GRILLE INSTALLATION.
 - 19) MOUNT RETURN AIR GRILLES AS LOW AS POSSIBLE ON MEZZANINE LEVEL. RUN RETURN DUCT THRU MEZZANINE CORRIDOR AT FLOOR LEVEL AND CONNECT TO AIR HANDLER.
 - 20) PROVIDE WIRE COVER OVER WALL MOUNTED THERMOSTAT. SEE SPECIFICATIONS.
 - 21) RISE 36x30 OUTSIDE AIR DUCT UP THRU ROOF AND CONNECT TO ROOF MOUNTED PENTHOUSE. PROVIDE MOTORIZED DAMPER IN OUTSIDE AIR DUCT AND INTERLOCK WITH AIR HANDLER FOR FULL ECONOMIZER CYCLE. REFER TO DETAIL D/M1.2 FOR TYPICAL PENTHOUSE INSTALLATION.
 - 22) EXISTING EQUIPMENT, DUCTWORK AND/OR PIPING TO REMAIN. PROTECT DURING CONSTRUCTION.
 - 23) DISCONNECT AND REMOVE EXISTING UNIT VENTILATOR, WALL SLEEVE AND OUTSIDE AIR LOUVER. DELIVER EXISTING UNIT TO OWNER.
 - 24) MOUNT CONDENSING UNIT ON ROOF. EXTEND REFRIGERANT PIPING THRU ROOF AND CONNECT TO COOLING COIL IN NEW AIR HANDLER. SEE DETAILS ON SHEET M1.3.
 - 25) INSTALL RELIEF AIR GRILLES AS HIGH AS POSSIBLE IN EXTERIOR WALL. PROVIDE MOTORIZED DAMPER AND INTERLOCK WITH AIR HANDLER. REFER TO DETAIL C/M1.2 FOR TYPICAL INSTALLATION.
 - 26) ALL RECTANGULAR DUCTWORK TO HAVE 1" ACOUSTICAL LINING. SEE SPECIFICATIONS.
 - 27) CONNECT GAS LINE TO EQUIPMENT WITH PRESSURE REGULATOR, SHUT-OFF VALVE AND FLEXIBLE HOSE. REFER TO DETAIL B/M1.2 FOR TYPICAL CONNECTION.
 - 28) PROVIDE CONDENSATE PUMP AS SPECIFIED. CONNECT EQUIPMENT DRAIN AND DRAIN PAN DRAIN LINE TO PUMP. RISE DISCHARGE LINE UP TO 24" ABOVE MEZZANINE FLOOR AND SLOPE TO EXTERIOR WALL. TERMINATE WITH WALL FLANGE. REFER TO DETAIL D/M1.3 FOR TYPICAL INSTALLATION.
 - 29) MOUNT NEW ROOF TOP UNIT ON ROOF CURB. DROP 18x6 SUPPLY AND RETURN PLENUMS DOWN THRU ROOF. CONNECT SUPPLY AND RETURN BRANCH DUCTS TO CORRESPONDING PLENUMS. REFER TO DETAIL L/M1.2 FOR ROOF CURB.
 - 30) INSTALL DIFFUSERS AND RETURN GRILLE IN EXISTING LAY-IN CEILING. FIELD VERIFY EXISTING CONDITIONS AND COORDINATE DIFFUSER AND GRILLE LOCATIONS WITH EXISTING BUILDING LIGHT FIXTURES, PIPING, CONDUITS, AND BUILDING STRUCTURE.

- PLAN NOTES:**
- 31) RUN 3/4" GAS LINE IN MEZZANINE CORRIDOR ABOVE. REFER TO MEZZANINE PLAN FOR CONTINUATION.
 - 32) CONNECT GAS LINE TO EQUIPMENT WITH PRESSURE REGULATOR, SHUT-OFF VALVE AND FLEXIBLE HOSE. REFER TO DETAIL B/M1.3 FOR TYPICAL PIPING CONNECTION TO ROOF TOP EQUIPMENT.
 - 33) PROVIDE AND INSTALL NEW BI-LEVEL DRINKING FOUNTAIN AS SPECIFIED. DROP 3/4" COLD WATER LINE BELOW FLOOR AND CONNECT TO 2" LINE. DROP 2" WASTE LINE BELOW FLOOR AND CONNECT TO EXISTING 4" WASTE LINE. RISE 1/2" VENT UP IN WALL. OFFSET AS NECESSARY AND RISE 2" VENT UP THRU LOWER ROOF.

MECHANICAL LOWER LEVEL PLAN
SCALE: 1/8" = 1'-0"

MECHANICAL MEZZANINE LEVEL
SCALE: 1/8" = 1'-0"

MECHANICAL MAIN LEVEL PLAN
SCALE: 1/8" = 1'-0"



Engineered Systems Associates
1355 EAST CENTER
POCATELLO, IDAHO 83201
PHONE: (208) 233-0501
FAX: (208) 233-0529
EMAIL: esa@engsystems.com
ESA JOB NUMBER: 17094

