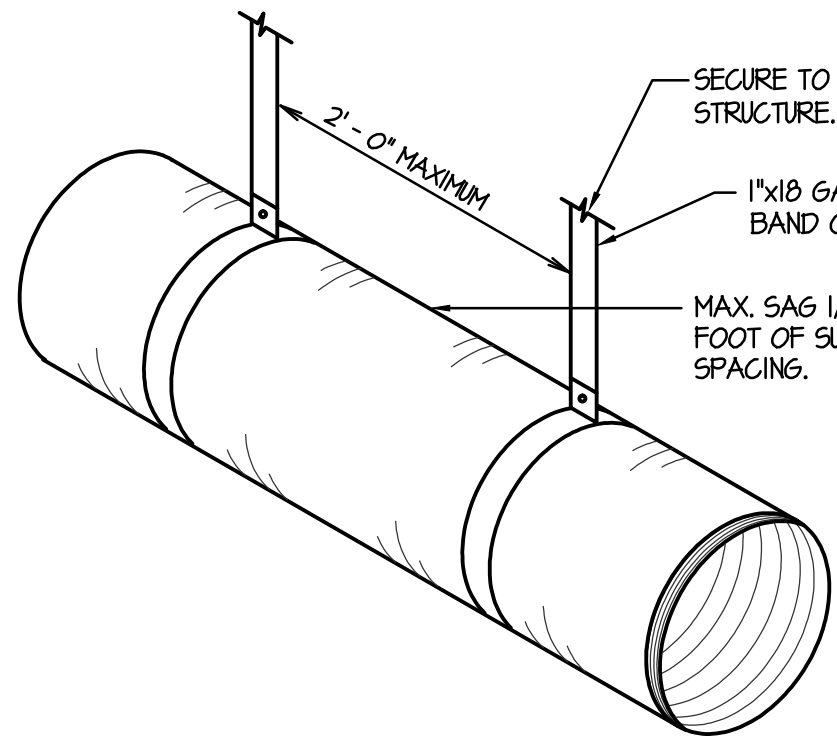
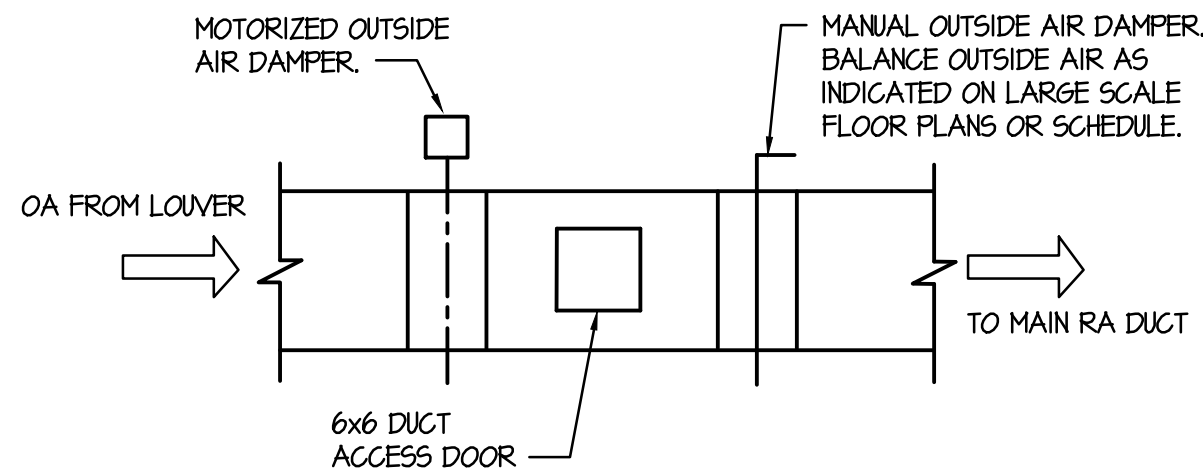


F:\V\T0201 Kershaw MS (Sugar City)\T0201-M3.1.dwg May 16, 2014 - 2:33pm



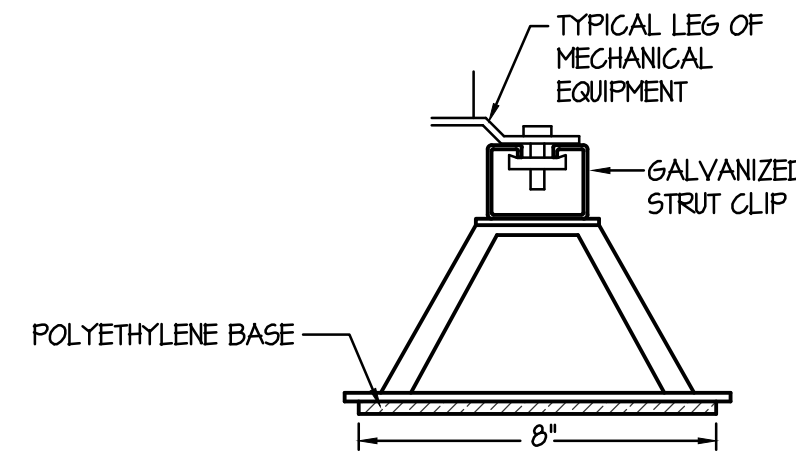
A FLEXIBLE DUCT SUPPORT DETAIL

NO SCALE



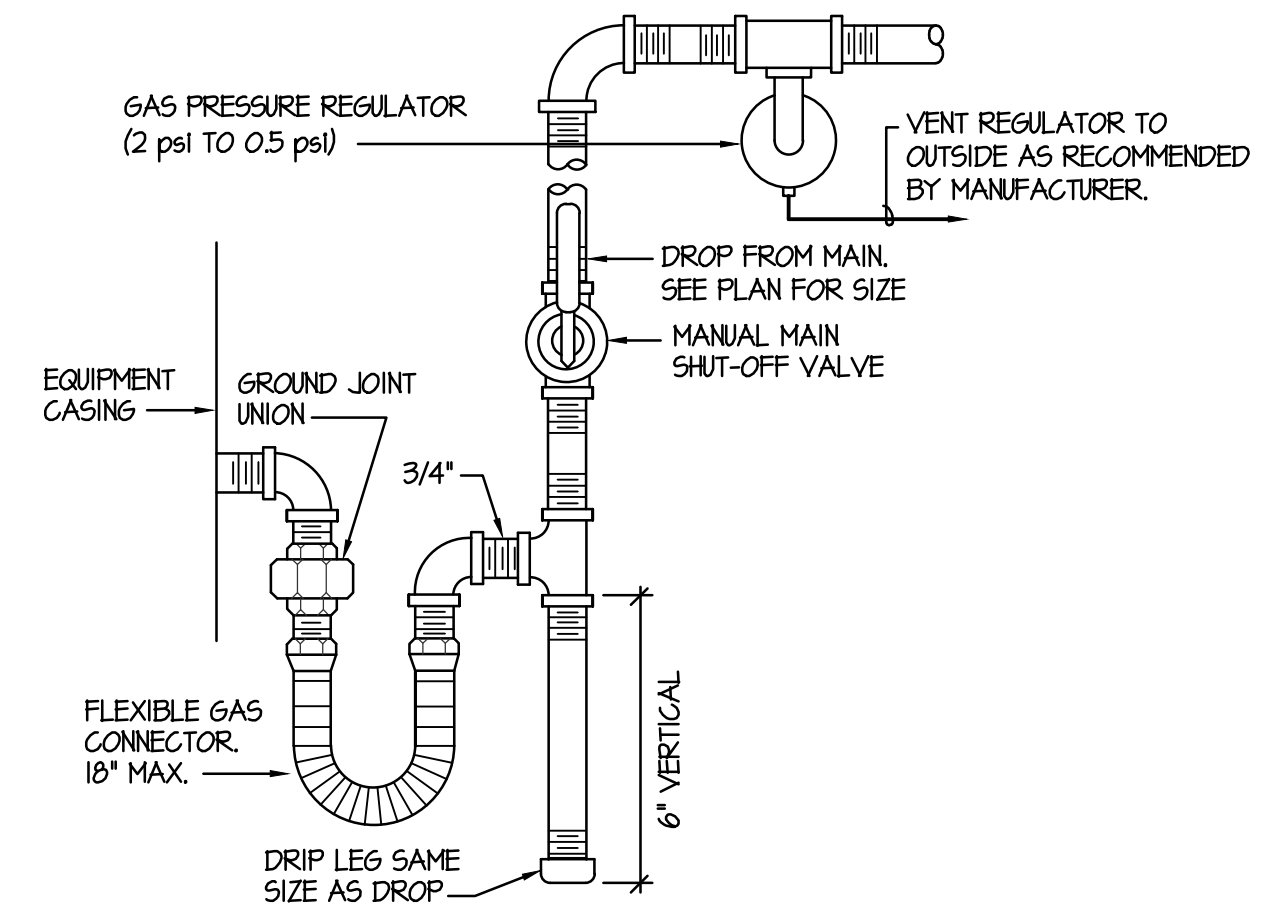
B TYPICAL OUTSIDE AIR DUCT DETAIL

NO SCALE



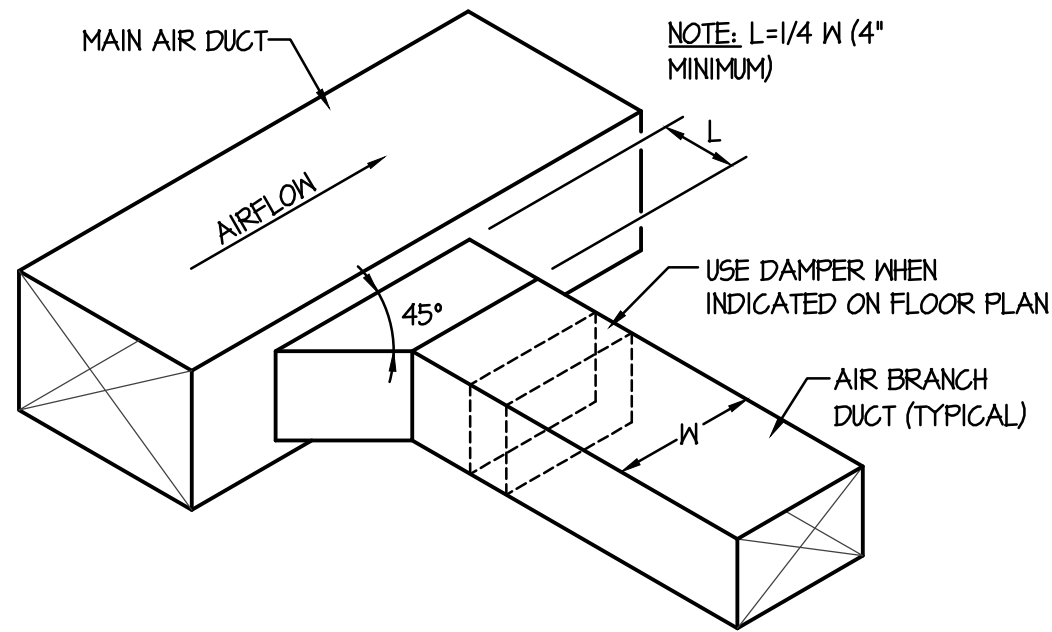
C PYRAMID TYPE EQUIPMENT SUPPORTS

NO SCALE



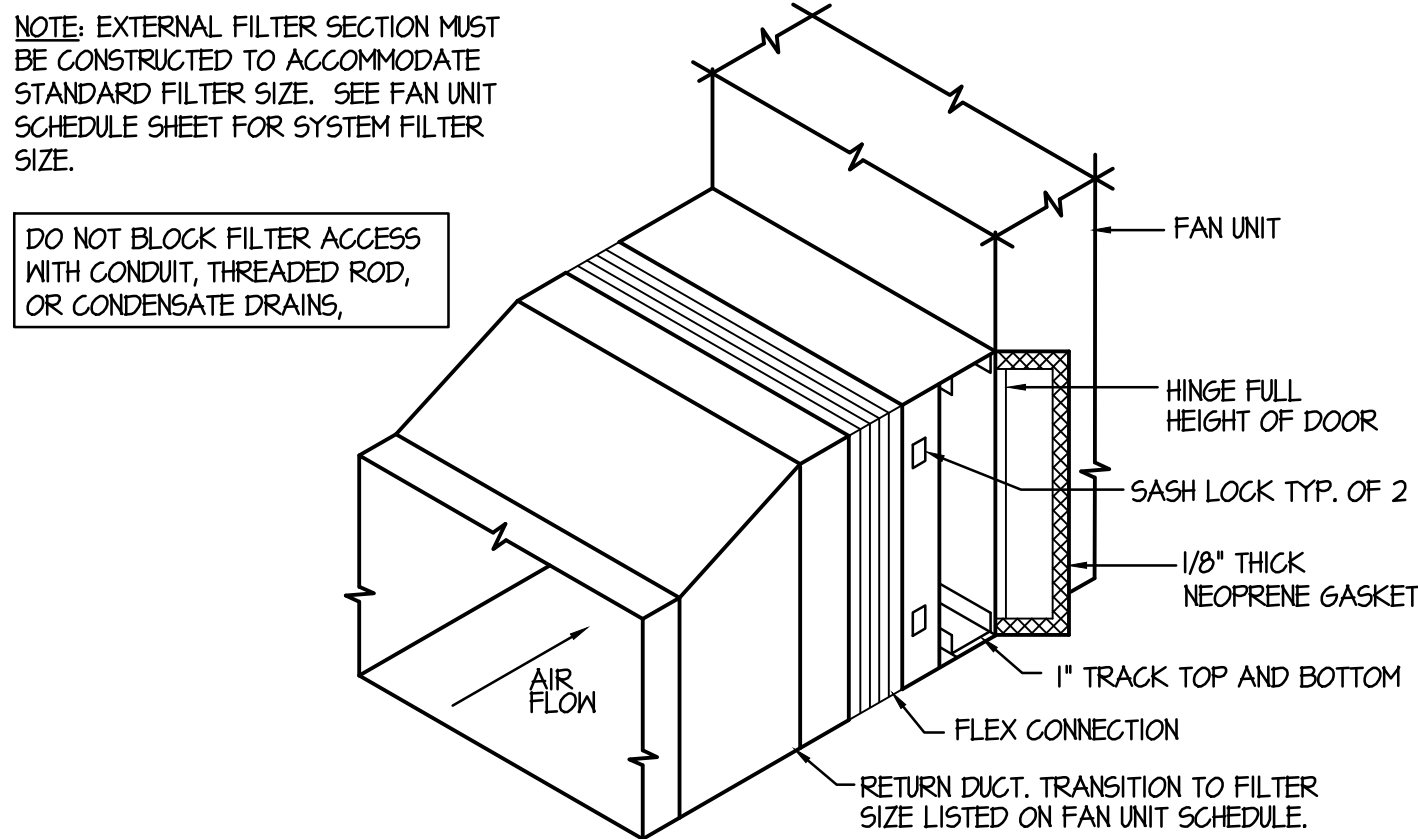
D GAS LINE CONNECTION DETAIL

NO SCALE



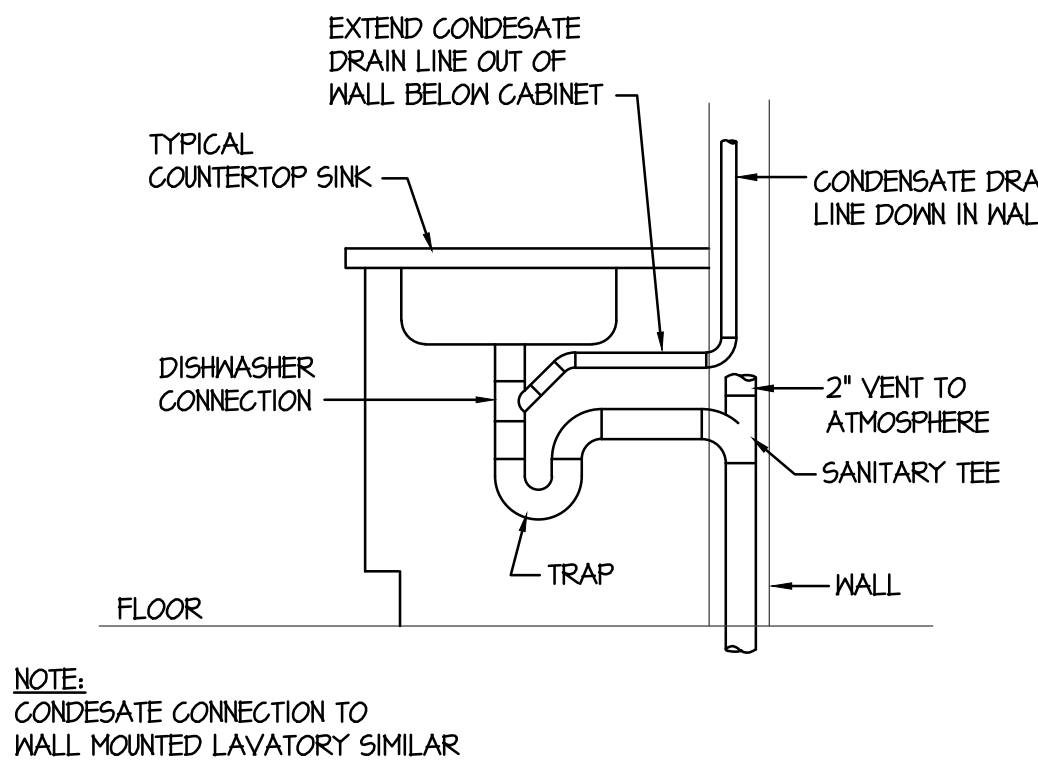
E RECTANGULAR DUCT CONNECTION

NO SCALE



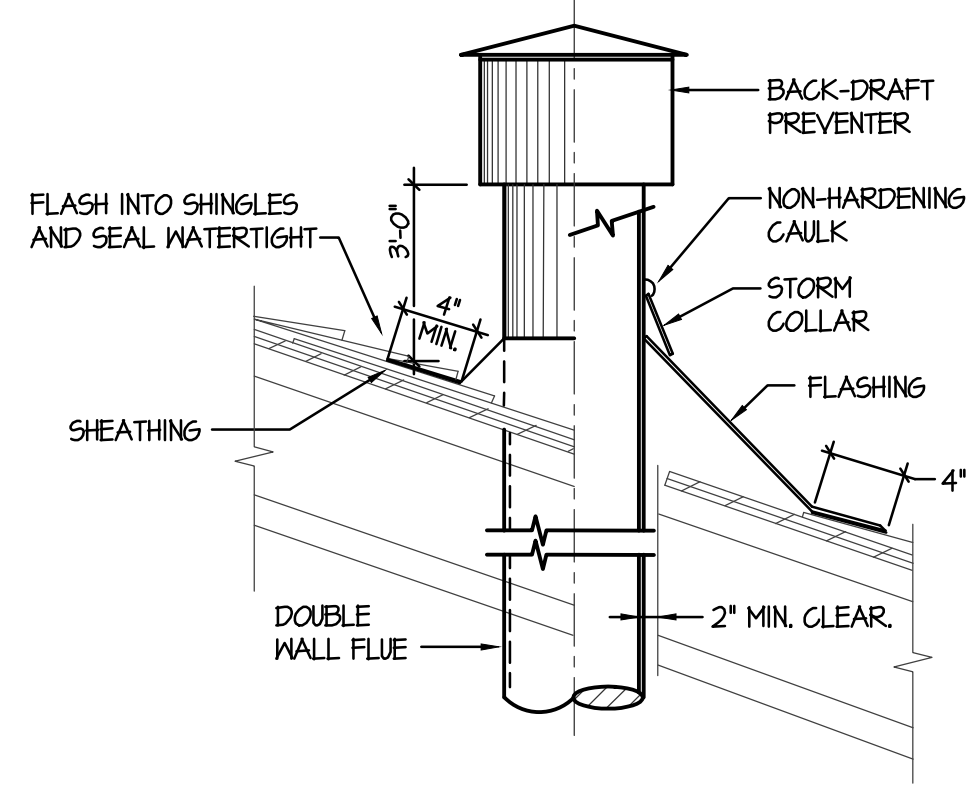
F EXTERNAL FILTER SECTION DETAIL

NO SCALE



G COND. DRAIN CONNECTION DETAIL

NO SCALE



H O.A. VENT THRU ROOF DETAIL

NO SCALE

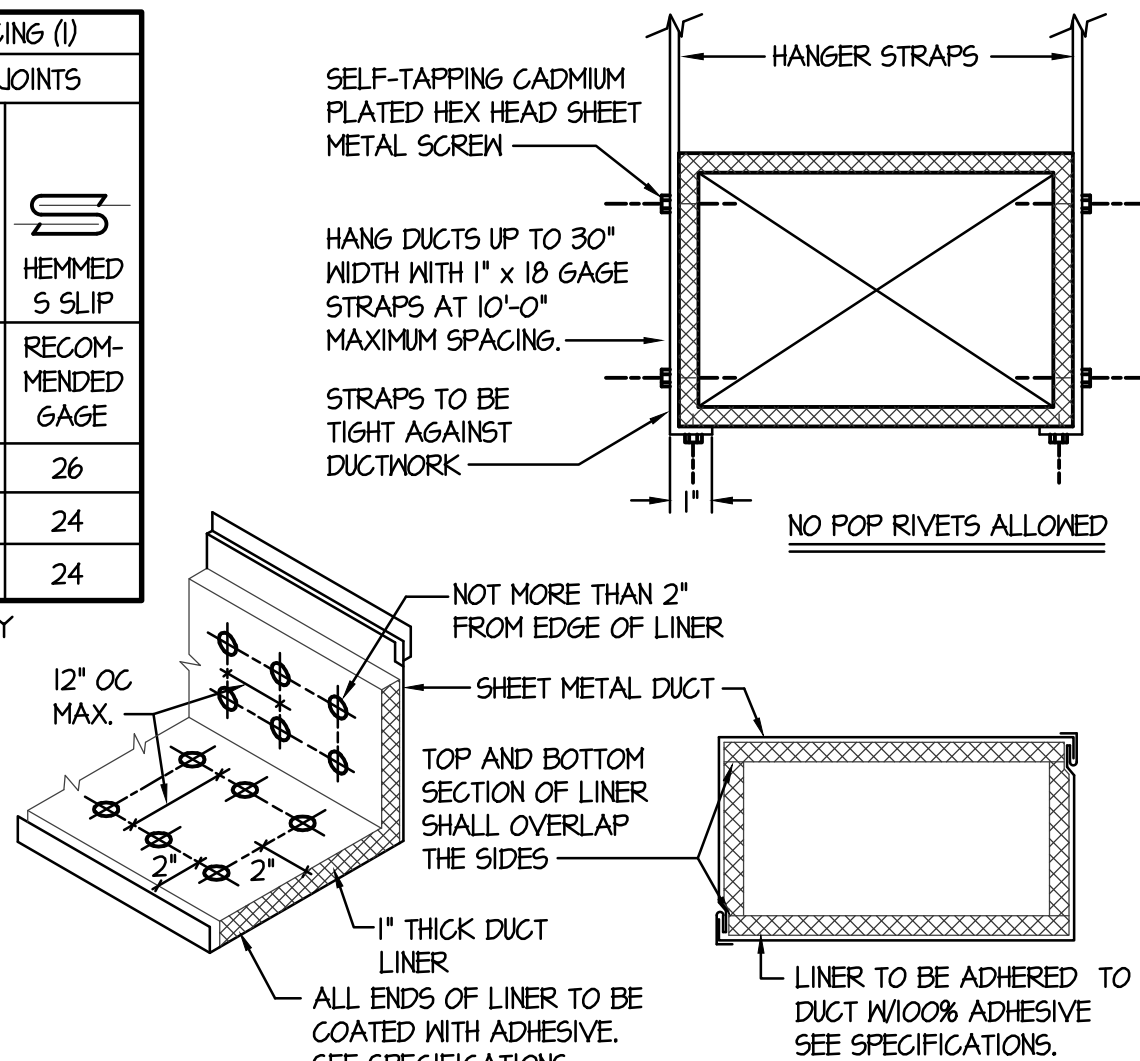
DIMENSION OF LONGEST SIDE, INCHES	SHEET METAL GAGE (ALL FOUR SIDES)	TRANSVERSE REINFORCING (1)	
		MINIMUM REINFORCING ANGLE SIZE AND MAXIMUM LONGITUDINAL SPACING BETWEEN TRANSVERSE JOINTS #1 OR INTERMEDIATE REINFORCING	AT JOINTS
UP THRU 12	26	NONE REQUIRED	DRIVE SLIP
13 - 18	24	NONE REQUIRED	HEMMED S SLIP
19 - 30	24	1"x1"x1/8" @ 60 IN	RECOM-MENDED GAGE

(1) TRANSVERSE REINFORCING SIZE IS DETERMINED BY DIMENSION OF SIDE TO WHICH ANGLE IS APPLIED.

METAL FASTENERS - O MARK INSULPING, DURO DYNE FASTENERS OR GRIPNAILS.

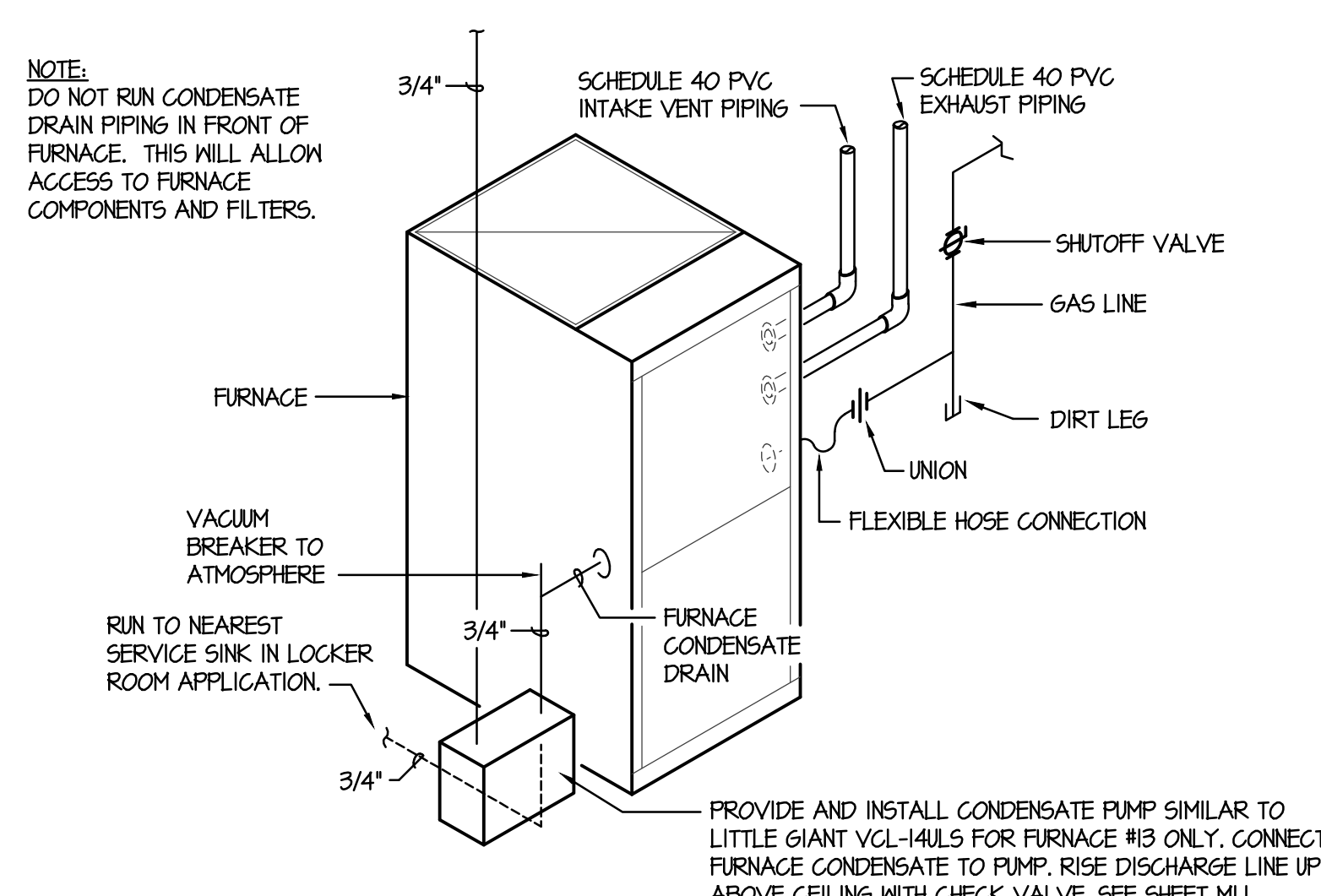
GRIP NAILS SHALL BE INSTALLED BY GRIPNAIL AIR HAMMER OR BY AUTOMATIC FASTENER EQUIP.

ENDS OF LINER SHALL BE BUTTED FIRMLY TOGETHER



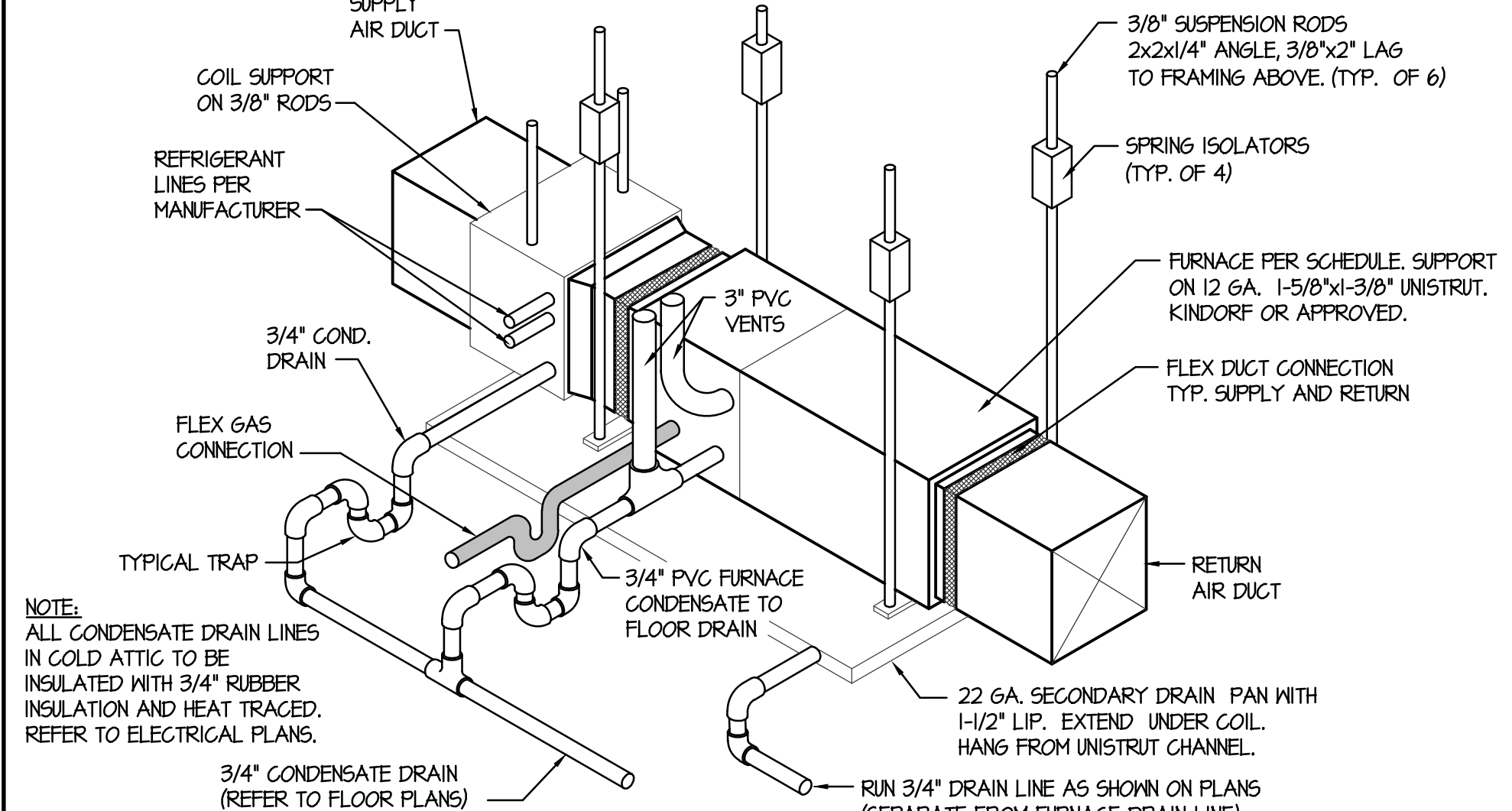
J DUCT CONSTRUCTION AND HANGER DETAILS

NO SCALE



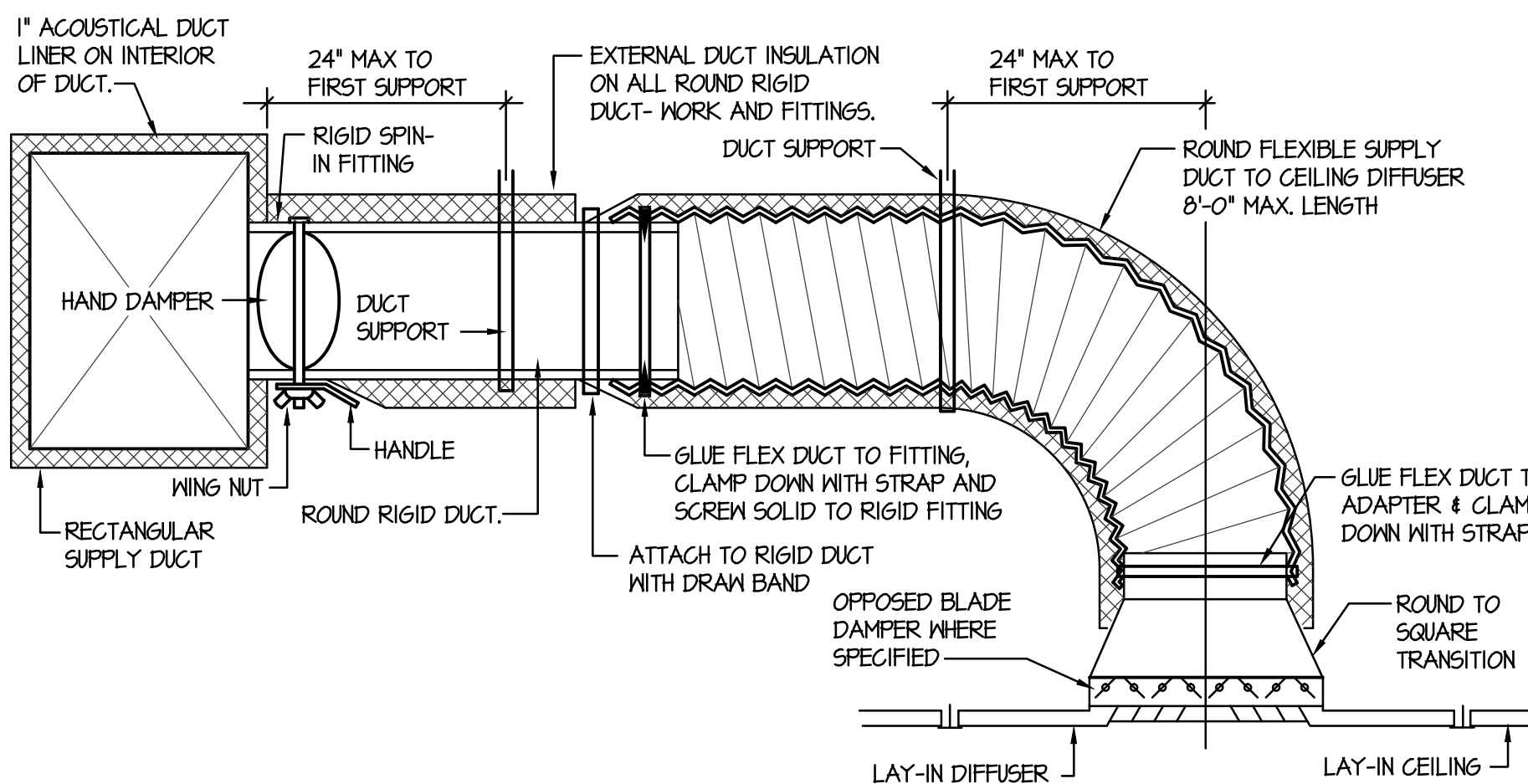
K DOWNFLOW FURNACE PIPING DAIGRAM

NO SCALE



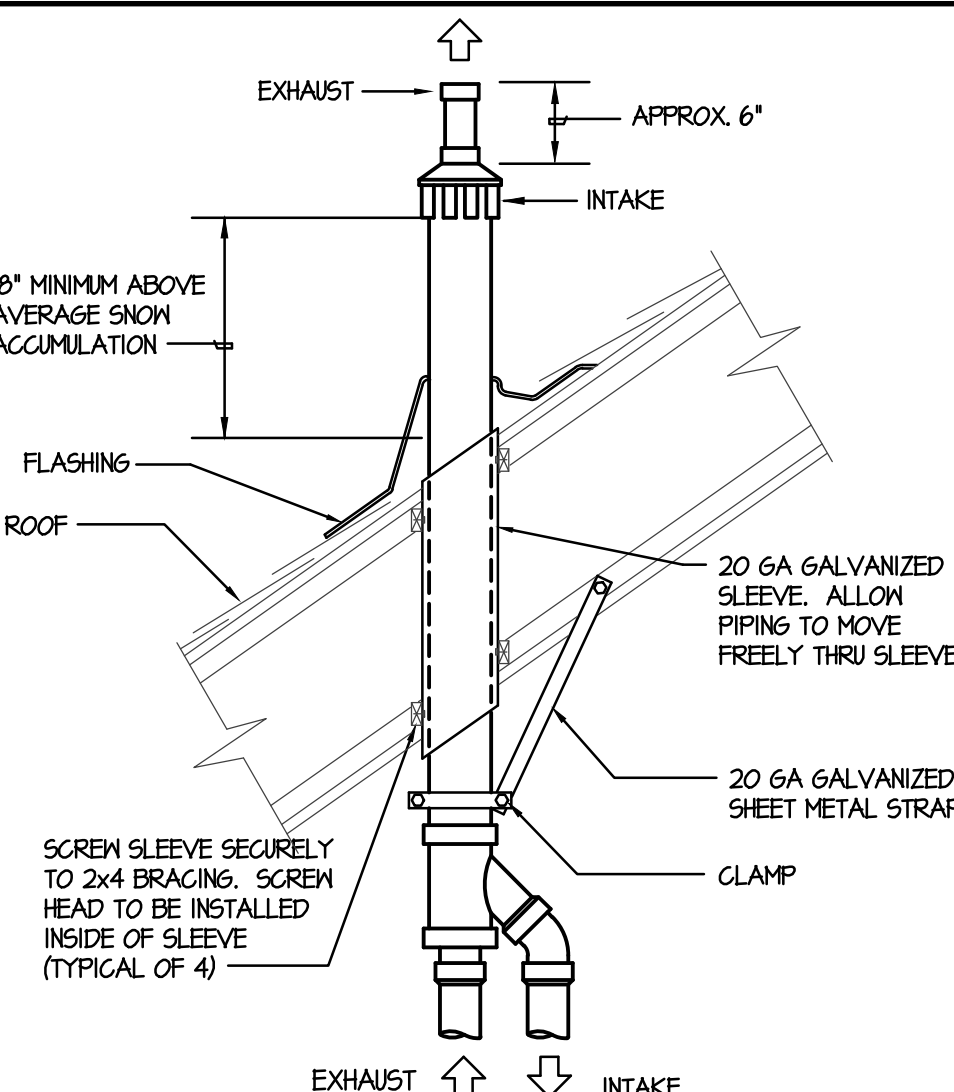
L HORIZONTAL FURNACE PIPING DIAGRAM

NO SCALE



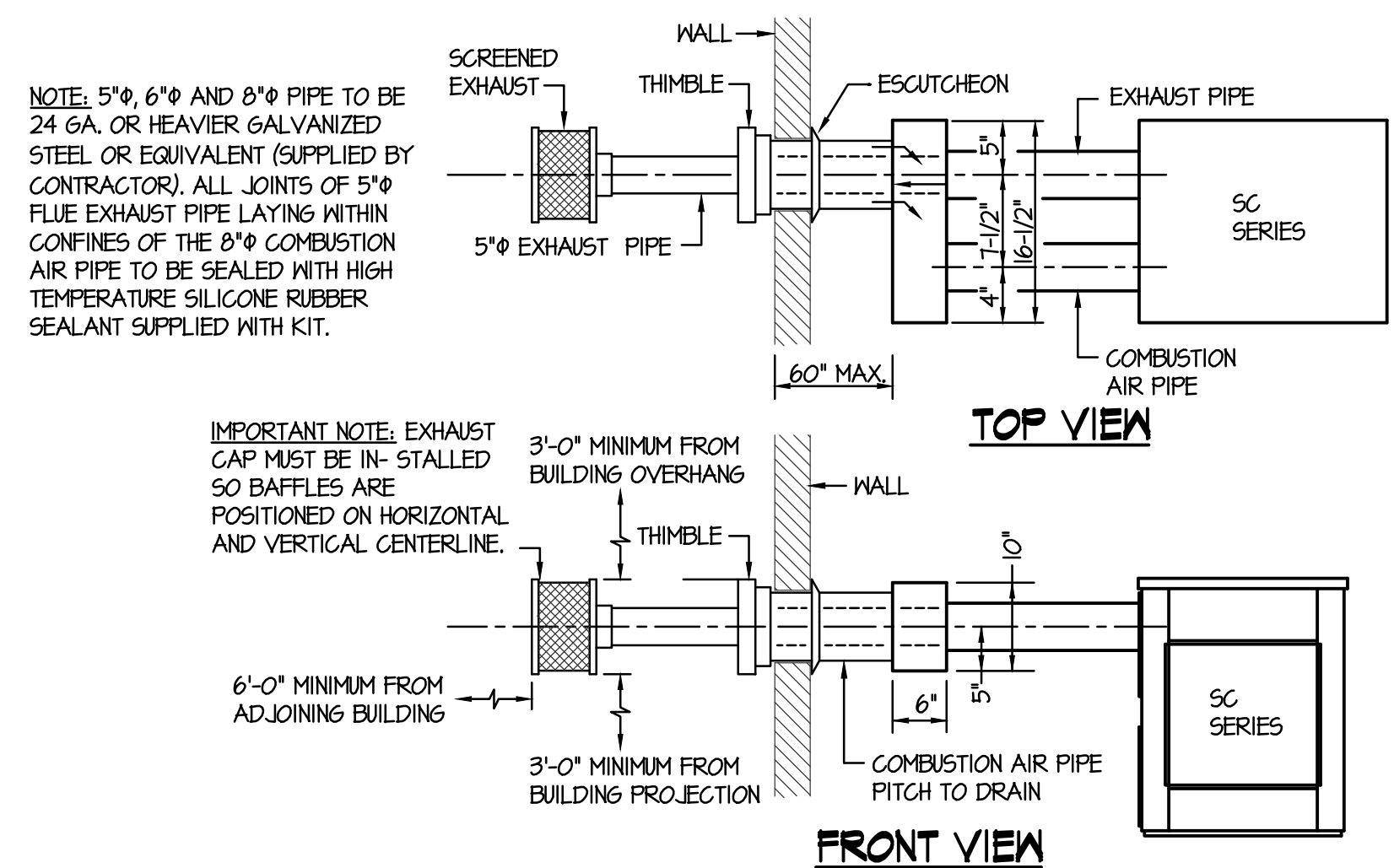
M CEILING DIFFUSER DETAIL WITH FLEXIBLE DUCT

NO SCALE



N CONCENTRIC FURNACE VENT-THRU-ROOF DETAIL

NO SCALE



O DUCT FURNACE VENT-THRU-WALL INSTALLATION

NO SCALE



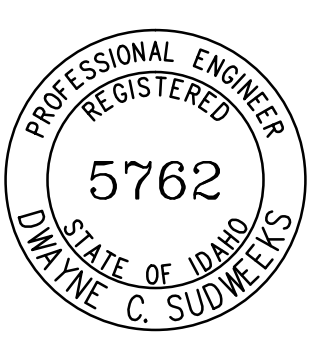
Engineered Systems Associates
Mechanical Engineers

Dwayne Sudweeks
1355 East Center - Pocatello, Idaho 83201
Phone: (208) 233-0501 Fax: (208) 233-0529 email: esa@engsystems.com

2019 HVAC RETROFIT FOR:
KERSHAW MIDDLE SCHOOL
SUGAR-SALEM SCHOOL DISTRICT #322
SUGAR CITY, IDAHO

MECHANICAL FLOOR PLAN

PROJECT:



DRWN. BY: M. JENSEN
JOB NO. 17081
DATE: MAY 2014

SHEET: M3.1
OF: NINE