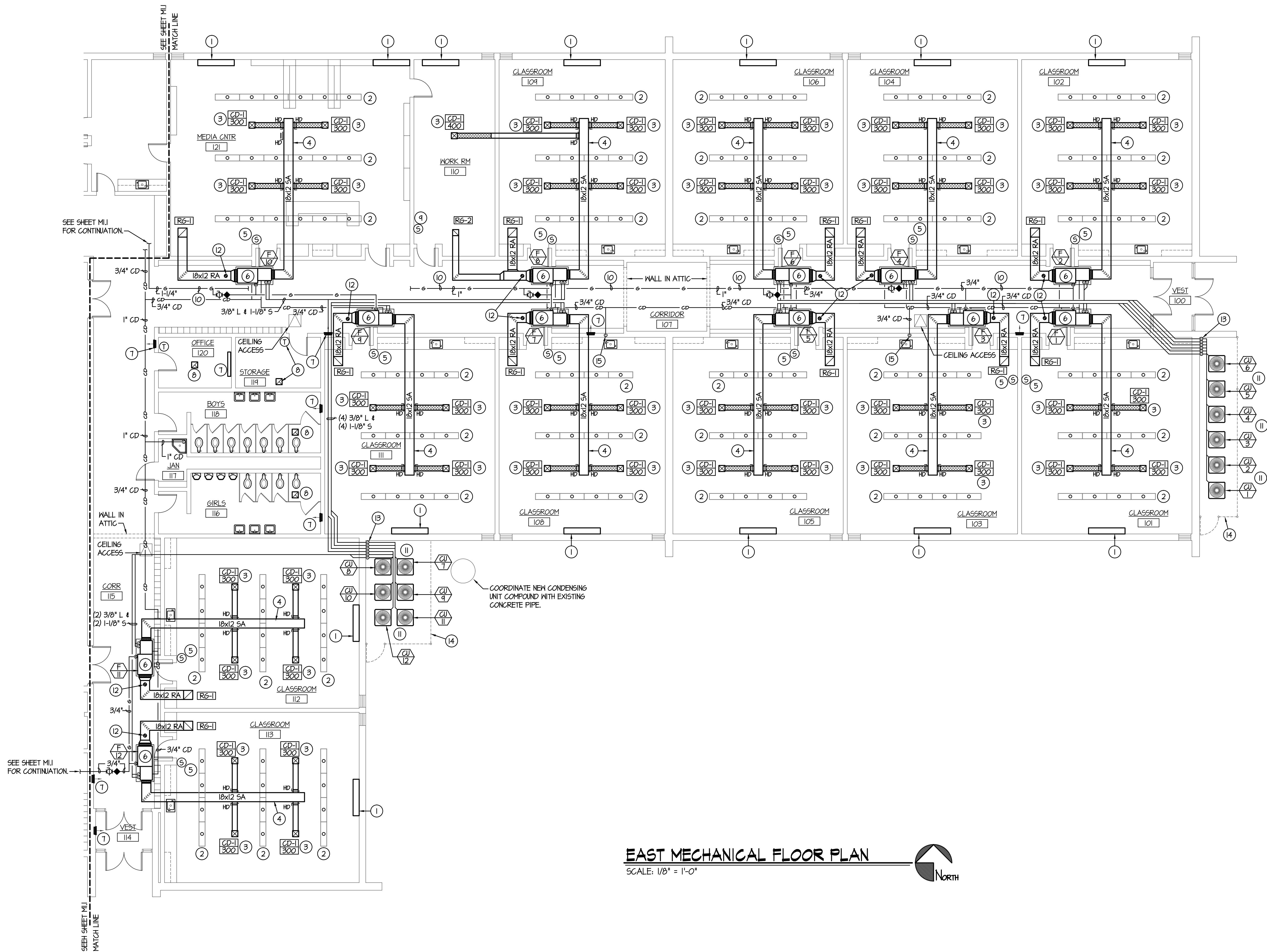


F:\T\T081 Kershaw MS (Sugar City)\T081-M12.dwg May 16, 2014 - 2:33pm



EAST MECHANICAL FLOOR PLAN

SCALE: 1/8" = 1'-0"



NOTE:
CONTRACTOR TO ENLARGE EXISTING
ATTIC ACCESSES AS REQUIRED TO
INSTALL NEW EQUIPMENT AND DUCTWORK.
FIELD VERIFY EXISTING CONDITIONS.

PLAN NOTES:

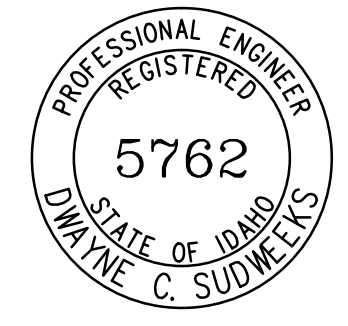
- EXISTING ELECTRIC UNIT VENTILATOR. UNIT TO BE ABANDONED IN PLACE. REMOVE OUTSIDE AIR LOUVER AND FILL WALL SLEEVE WITH RIGID INSULATION. BLANK OFF INTERIOR SIDE OF LOUVER WITH SHEET METAL AND SEAL WATER TIGHT. RE-INSTALL EXISTING LOUVER AND SEAL FRAME TO EXISTING BUILDING WALL.
- EXISTING LIGHT FIXTURES TO REMAIN. FIELD VERIFY EXACT LOCATIONS AND COORDINATE INSTALLATION OF NEW DUCTWORK AND DIFFUSERS WITH EXISTING LIGHT FIXTURES.
- PROVIDE AND INSTALL NEW CEILING DIFFUSER AS SPECIFIED. INSTALL IN EXISTING CEILING. COORDINATE DIFFUSER LOCATIONS WITH EXISTING CEILING TILE AND LIGHT FIXTURES. CUT EXISTING CEILING ONLY AS REQUIRED TO INSTALL DIFFUSER. PATCH ANY OPENINGS IN CEILING AROUND NEW DIFFUSERS.
- INSTALL NEW DUCTWORK IN ATTIC SPACE AS SHOWN. SUPPORT DUCTS FROM ROOF STRUCTURE. FIELD VERIFY EXISTING CONDITIONS AND SPACE AVAILABLE FOR NEW DUCTWORK.
- REPLACE EXISTING WALL MOUNTED THERMOSTAT WITH NEW DIGITAL ROOM SENSOR AS SPECIFIED. TIE CONTROL TO CORRESPONDING UNIT AND TO NEW BUILDING CONTROL SYSTEM.
- PROVIDE AND INSTALL NEW HORIZONTAL FURNACE AS SPECIFIED. SUPPORT FURNACE FROM EXISTING ROOF STRUCTURE. PROVIDE SHEET METAL DRAIN PAN BELOW FURNACE AND DX COOLING COIL. REFER TO DETAIL LMBJ FOR TYPICAL SUPPORTS AND PIPING CONNECTIONS TO NEW FURNACE AND DRAIN PAN. RISE 6" OUTSIDE AIR DUCT UP AND TERMINATE AT NORTH SIDE OF ROOF RIDGE VENT. REFER TO DETAIL HMBJ FOR TYPICAL OUTSIDE AIR DUCT.
- EXISTING WALL MOUNTED ELECTRIC HEATER AND THERMOSTAT TO REMAIN. PROTECT DURING CONSTR.
- EXISTING CEILING MOUNTED, ROOF MOUNTED, OR VENT SET EXHAUST FAN AND ALL ASSOCIATED DUCTWORK TO REMAIN. PROTECT DURING CONSTRUCTION.
- DISCONNECT AND REMOVE EXISTING WALL MOUNTED THERMOSTAT. PROVIDE BLANK COVER OVER EXISTING J-BOX.
- RUN NEW GAS LINE THRU ATTIC SPACE. FIELD VERIFY EXISTING CONDITIONS AND ADJUST ROUTING OF PIPING AS REQUIRED FOR CONDITIONS.
- MOUNT CONDENSING UNITS ON EXISTING PAVEMENT OR CONCRETE WITH PYRAMID TYPE SUPPORTS. SPACE UNITS WITH 18" MINIMUM DISTANCE BETWEEN WALL AND OTHER UNITS.
- 6" OUTSIDE AIR DUCT UP THRU EXISTING METAL ROOF. REFER TO DETAIL HMBJ FOR TYPICAL INSTALLATION.
- RISE REFRIGERANT LINES UP WALL TO ABOVE CEILINGS. COVER EXPOSED PIPING WITH SHEET METAL COVER. REFER TO DETAIL DMB2 FOR TYPICAL REFRIGERANT PIPING SUPPORTS AND COVERS.
- INSTALL 4'-0" HIGH CHAIN LINK FENCE AROUND COMPOUND WITH 3'-0" WIDE GATE COMPLETE WITH PADLOCK LATCH AND PRIVACY SLATS.
- DROP 3/4" CONDENSATE DRAIN LINE DOWN IN WALL. EXTEND OUT BELOW EXISTING COUNTER AND CONNECT TO SINK SIDE OF P-TRAP WITH DISHWASHER TYPE CONNECTION. REFER TO DETAIL GMBJ FOR TYPICAL INSTALLATION.



Engineered Systems Associates
Mechanical Engineers

Dwayne Sudweeks
1355 East Center - Pocatello, Idaho 83201
Phone: (208) 233-0501 Fax: (208) 233-0529 email: esa@engsystems.com

2019 HVAC RETROFIT FOR:
KERSHAW MIDDLE SCHOOL
SUGAR-SALEM SCHOOL DISTRICT #322 SUGAR CITY, IDAHO
PROJECT:
SHEET TITLE:
EAST MECHANICAL FLOOR PLAN



DRWN. BY:	OKD. BY:
M. JENSEN	D. SUDWEEKS
JOB NO.	DATE:
17081	MAY 2014

SHEET:
M1.2
OF: NINE