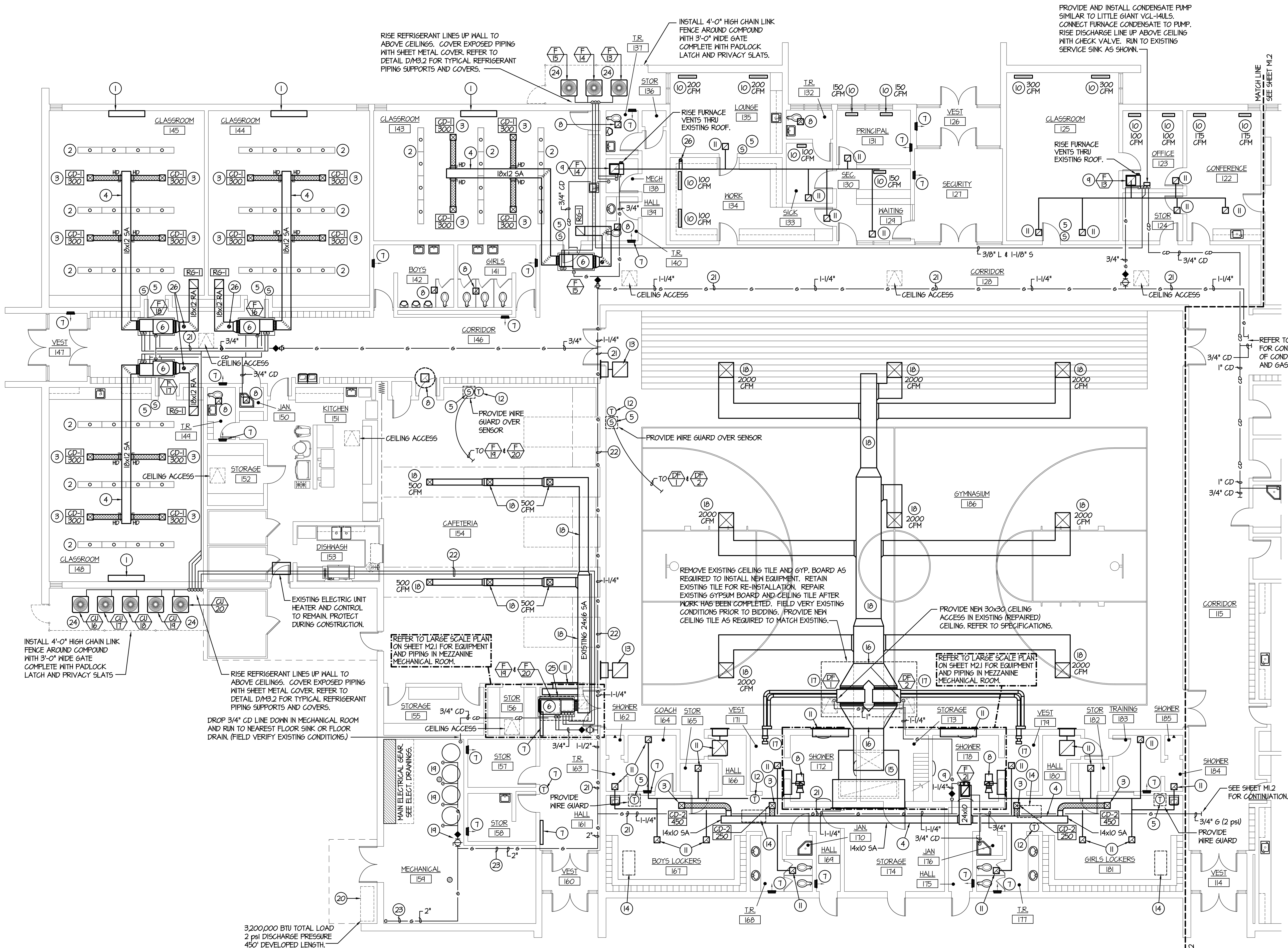
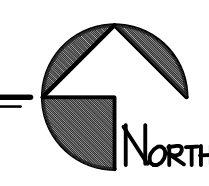


F:\N\T0281 Kershaw MS Sugar City\T0281-M1-L.dwg May 16, 2019 - 2:23pm




WEST MECHANICAL FLOOR PLAN  
SCALE: 1/8" = 1'-0"



NOTE:  
CONTRACTOR TO ENLARGE EXISTING  
ATTIC ACCESSES AS REQUIRED TO  
INSTALL NEW EQUIPMENT AND DUCTWORK.  
FIELD VERIFY EXISTING CONDITIONS.

- PLAN NOTES:**
- EXISTING ELECTRIC UNIT VENTILATOR. UNIT TO BE ABANDONED IN PLACE. REMOVE OUTSIDE AIR LOUVER AND FILL WALL SLEEVE WITH RIGID INSULATION. BLANK OFF INTERIOR SIDE OF LOUVER WITH SHEET METAL AND SEAL WATER TIGHT. RE-INSTALL EXISTING LOUVER AND SEAL FRAME TO EXISTING BUILDING WALL.
  - EXISTING LIGHT FIXTURES TO REMAIN. FIELD VERIFY EXACT LOCATIONS AND COORDINATE INSTALLATION OF NEW DUCTWORK AND DIFFUSERS WITH EXISTING LIGHT FIXTURES.
  - PROVIDE AND INSTALL NEW CEILING DIFFUSER AS SPECIFIED. INSTALL IN EXISTING CEILING. COORDINATE DIFFUSER LOCATIONS WITH EXISTING CEILING TILE AND LIGHT FIXTURES. CUT EXISTING CEILING ONLY AS REQUIRED TO INSTALL DIFFUSER. PATCH ANY OPENINGS IN CEILING AROUND NEW DIFFUSERS.
  - INSTALL NEW DUCTWORK IN ATTIC SPACE AS SHOWN. SUPPORT DUCTS FROM ROOF STRUCTURE. FIELD VERIFY EXISTING CONDITIONS AND SPACE AVAILABLE FOR NEW DUCTWORK.
  - REPLACE EXISTING WALL MOUNTED THERMOSTAT WITH NEW DIGITAL ROOM SENSOR AS SPECIFIED. FIELD VERIFY EXISTING CONDITIONS AND SPACE AVAILABLE FOR NEW DUCTWORK.
  - PROVIDE AND INSTALL NEW HORIZONTAL FURNACE AS SPECIFIED. SUPPORT FURNACE FROM EXISTING ROOF STRUCTURE. PROVIDE SHEET METAL DRAIN PAN BELOW FURNACE AND DX COOLING COIL. REFER TO DETAIL M1.1 FOR TYPICAL SUPPORTS AND PIPING CONNECTIONS TO NEW FURNACE AND DRAIN PAN. RISE 6" OUTSIDE AIR DUCT UP AND TERMINATE AT NORTH SIDE OF ROOF RIDGE VENT.
  - EXISTING WALL MOUNTED ELECTRIC HEATER AND THERMOSTAT TO REMAIN. PROTECT DURING CONSTR.
  - EXISTING CEILING MOUNTED, ROOF MOUNTED, OR VENT SET EXHAUST FAN AND ALL ASSOCIATED DUCTWORK TO REMAIN. PROTECT DURING CONSTR.
  - PROVIDE AND INSTALL NEW DOWN-FLOW FURNACE AS SPECIFIED. CONNECT TO EXISTING DUCTWORK WITH NEW NEOPRENE FLEX CONNECTION. FIELD VERIFY EXACT DUCT SIZES AND LOCATIONS. RISE 6" OUTSIDE AIR DUCT UP THRU ROOF OR THRU EXTERIOR WALL AS REQUIRED. REFER TO DETAIL M1.1 FOR TYPICAL ROOF ROOF PENETRATION. WALL PENETRATION SIMILAR.
  - EXISTING FLOOR REGISTER AND/OR TOE KICK GRILLE TO REMAIN. RE-BALANCE TO CFM AS INDICATED.
  - EXISTING EXHAUST GRILLE, TRANSFER GRILLE, AND/OR RETURN GRILLE TO REMAIN. PROTECT GRILLES AND DUCTWORK DURING CONSTRUCTION. COORDINATE NEW DUCTWORK WITH EXISTING.
  - DISCONNECT AND REMOVE EXISTING WALL MOUNTED THERMOSTAT. PROVIDE BLANK COVER OVER EXISTING J-BOX.
  - EXISTING RELIEF GRILLE TO REMAIN. REPLACE EXISTING DAMPER AND MOTOR AS REQUIRED TO CONNECT TO NEW BUILDING DIGITAL CONTROL SYSTEM.
  - DISCONNECT AND ABANDON EXISTING CEILING MOUNTED UNIT HEATER. REFER TO ELECTRICAL DRAWINGS.
  - EXISTING AIR HANDLER TO REMAIN. DISCONNECT AND REMOVE EXISTING 200 KM ELECTRICAL HEAT ELEMENT. REFER TO ELECTRICAL DRAWINGS.
  - REMOVE SECTION OF EXISTING 60x24 DUCT IN ATTIC AS REQUIRED TO INSTALL NEW DUCT FURNACE. PROVIDE NEW DUCT TRANSITIONS AS REQUIRED TO CONNECT EXISTING DUCT TO NEW FURNACES. FIELD VERIFY EXACT DUCT SIZES AND LOCATIONS.
  - PROVIDE AND INSTALL NEW DUCT FURNACE AS SPECIFIED. MOUNT IN ATTIC SPACE AND SUPPORT FROM ROOF STRUCTURE. CONNECT 1" GAS LINE WITH SHUT-OFF VALVE AND FLEXIBLE HOSE TO EACH UNIT. (REFER TO DETAIL M1.1) RUN (2) 6" VENTS THRU ATTIC SPACE AND EXTEND THRU EXTERIOR WALL WITH CONCENTRIC TYPE FITTING. (REFER TO DETAIL M1.1)
  - EXISTING CEILING DIFFUSER AND DUCTWORK TO REMAIN. RE-BALANCE EXISTING DIFFUSER TO CFM AS INDICATED.
  - EXISTING GAS FIRED WATER HEATERS TO REMAIN. DISCONNECT EQUIPMENT FROM EXISTING METER AND RECONNECT TO NEW GAS PIPING IN MECHANICAL ROOM. FIELD VERIFY EXACT SIZE AND LOCATION OF EXISTING GAS PIPING. PROVIDE NEW PRESSURE REGULATOR AT POINT OF CONNECTION TO NEW PIPING.
  - EXISTING GAS METER TO BE REMOVED AND REPLACED WITH NEW METER BY LOCAL GAS COMPANY. NEW METER TO BE SIZED FOR 3,200,000 BTU CAPACITY WITH 2 PSI DISCHARGE PRESSURE. REPLACE EXISTING GAS PIPING IN MECHANICAL ROOM AS SHOWN.
  - RUN NEW GAS LINE THRU ATTIC SPACE. FIELD VERIFY EXISTING CONDITIONS AND ADJUST ROUTING OF PIPING AS REQUIRED FOR CONDITIONS.
  - RUN NEW REFRIGERANT AND GAS PIPING ABOVE CEILING CLOUD IN CAFETERIA. COORDINATE PIPING WITH EXISTING LIGHT FIXTURES AND DUCTWORK.
  - REPLACE EXISTING GAS LINE IN MECHANICAL ROOM WITH NEW PIPING AS CALLED OUT. CONNECT TO EXISTING LINE FEEDING EXISTING WATER HEATERS WITH PRESSURE REGULATOR AND SHUT-OFF VALVE. FIELD VERIFY LINE SIZE FEEDING WATER HEATERS.
  - MOUNT CONDENSING UNITS ON EXISTING PAVEMENT OR CONCRETE WITH PYRAMID TYPE SUPPORTS. SPACE UNITS WITH 18" MINIMUM DISTANCE BETWEEN WALL AND OTHER UNITS.
  - DISCONNECT AND REMOVE EXISTING AIR HANDLER FROM MEZZANINE MECHANICAL ROOM. CUT UP EXISTING UNIT AS REQUIRED FROM REMOVAL. DISCONNECT AND REMOVE EXISTING 40 KM ELECTRICAL HEAT ELEMENT. REFER TO ELECTRICAL DRAWINGS.
  - 6" OUTSIDE AIR DUCT UP THRU EXISTING METAL ROOF. REFER TO DETAIL M1.1 FOR TYPICAL INSTALLATION.



**Engineered Systems Associates**  
**Mechanical Engineers**

Dwayne Sudweeks  
1355 East Center - Pocatello, Idaho 83201  
Phone: (208) 233-0501 Fax: (208) 233-0529 email: esa@engsys.com

**2019 HVAC RETROFIT FOR:**  
**KERSHAW MIDDLE SCHOOL**  
**SUGAR-SALEM SCHOOL DISTRICT #322**

**WEST MECHANICAL FLOOR PLAN**

PROJECT:

PROFESSIONAL ENGINEER  
REGISTERED  
5762  
DWAYNE C. SUDWECKS

DRWN. BY:	OKD. BY:
M. JENSEN	D. SUDWECKS
JOB NO.	DATE:
17081	MAY 2019

SHEET:  
M.1  
OF: NINE