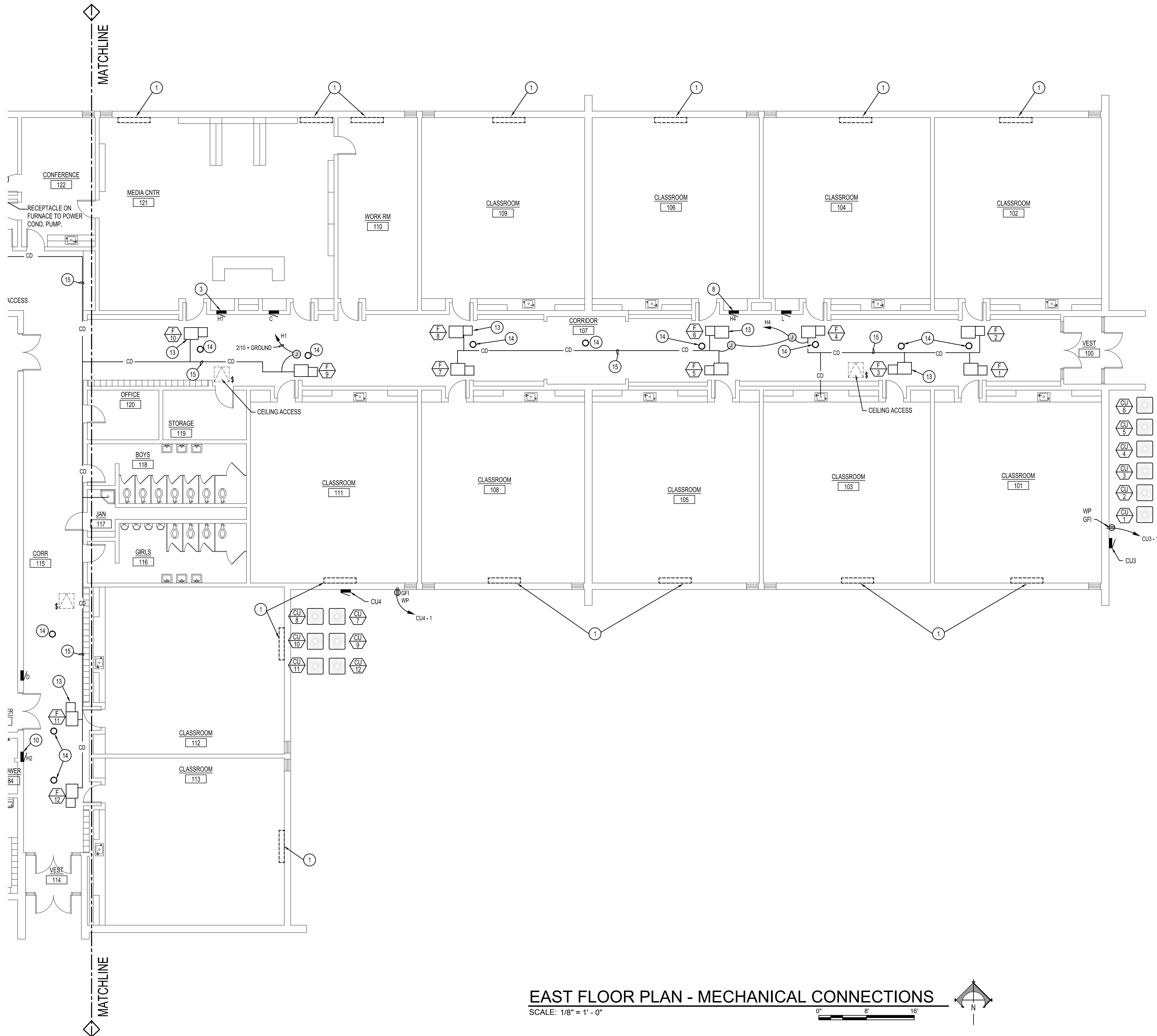


\\PESERVER\Payne Engineering Data\2019\Kershaw Middle School - 1934\10\_Working Drawings\1934.E1.dwg May 10, 2019 - 1:17pm



## ELECTRICAL KEY NOTES

- 1 DISCONNECT AND REMOVE EXISTING CIRCUIT FROM EXISTING UNIT VENTILATOR. REMOVE ALL ACCESSIBLE CONDUIT AND CONDUCTORS BACK TO SOURCE AND LABEL "SPARE". REMOVE UNUSED BREAKERS AS REQUIRED FOR NEW BREAKERS.
- 2 EXISTING PANEL TO REMAIN. E.C. SHALL PROVIDE AND INSTALL NEW TYPED PANEL INDEX REFLECTING NEW LOADS.
- 3 PROVIDE AND INSTALL AN 80 A 3P BREAKER IN EXISTING PANEL H1 FOR NEW PANEL CU-4, AND (5) 20A 1P FOR FURNACES. (1) 30A GFEPD FOR PIPE TRACE.
- 4 PROVIDE AND INSTALL A 125A 3P BREAKER IN EXISTING PANEL H FOR PANEL CU-1.
- 5 DISCONNECT AND REMOVE EXISTING CIRCUIT FROM EXISTING AIR HANDLER AND HEATING ELEMENT. REMOVE ALL ACCESSIBLE CONDUIT AND CONDUCTORS BACK TO SOURCE LABEL "SPARE".
- 6 EXISTING AIR HANDLER TO REMAIN. E.C. SHALL DISCONNECT EXISTING 200KW HEATING ELEMENT. REMOVE ALL ACCESSIBLE CONDUIT AND CONDUCTORS BACK TO SOURCE AND LABEL "SPARE".
- 7 DISCONNECT AND REMOVE EXISTING CIRCUIT FROM EXISTING CEILING HEAT. REMOVE ALL ACCESSIBLE CONDUIT AND CONDUCTORS BACK TO SOURCE LABEL "SPARE".
- 8 PROVIDE AND INSTALL (6) 20A 1P BREAKERS IN EXISTING PANEL H4 AND (1) 20A GFEPD BREAKER FOR PIPE CHASE.
- 9 PROVIDE AND INSTALL (2) 20A 1P BREAKERS IN PANEL B FOR NEW FURNACES.
- 10 PROVIDE AND INSTALL (6) 20A 1P BREAKERS IN EXISTING PANEL H2 FOR NEW FURNACES AND (1) 20A GFEPD BREAKER FOR PIPE TRACE.
- 11 PROVIDE AND INSTALL (3) 20A 1P BREAKERS IN EXISTING PANEL H FOR NEW FURNACES AND (1) 20A GFEPD BREAKER FOR PIPE TRACE.
- 12 PROVIDE AND INSTALL (3) 20A 1P BREAKERS IN EXISTING PANEL H3 FOR NEW FURNACES AND (1) 20A GFEPD BREAKER FOR PIPE TRACE.
- 13 INSTALL A GFI SERVICE RECEPTACLE ON THIS FURNACE. CONNECT TO FURNACE CIRCUIT AHEAD OF FURNACE DISCONNECT.
- 14 PROVIDE AND INSTALL KEYLESS SOCKETS WITH WIRE GUARD. PROVIDE AN 8W LED A19 LAMP. CONTROL WITH PILOT LIGHT SWITCH AT NEAREST CEILING ACCESS. CONNECT TO FURNACE RECEPTACLE CIRCUIT DESCRIBED IN KEY NOTE 13.
- 15 PROVIDE AND INSTALL PIPE FREEZE PROTECTION SUCH AS RAYCHEM 5XL1. INSTALL PER MANUFACTURER'S RECOMMENDATIONS. PROVIDE ALL REQUIRED POWER CONNECTIONS, SPLICES, ETC. CONNECT TO GFEPD BREAKER IN DESIGNATED PANEL.



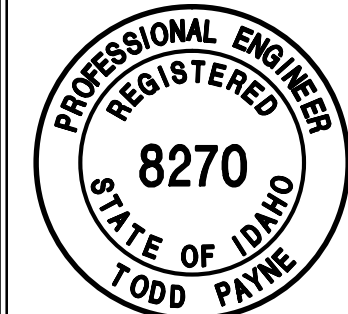
**Engineered Systems Associates**  
**Mechanical Engineers**

Wayne Sudweeks  
1355 East Center - Pocatello, Idaho 83201  
Phone: (208) 233-0501 Fax: (208) 233-0529 email: esa@engsystems.com

PROJECT:  
**2019 HVAC RETROFIT FOR:  
KERSHAW MIDDLE SCHOOL**  
SUGAR-SALEM SCHOOL DISTRICT #332 SUGAR CITY, IDAHO

SHEET TITLE:  
**EAST FLOOR PLAN MECHANICAL CONNECTIONS**

ORIGINAL SIGNED BY:  
TODD E. PAYNE  
DATED ORIGINAL SIGNED:  
5-10-2019  
ON FILE AT:  
PAYNE ENGINEERING INC.



DRWN. BY: MMP	CKD. BY: TEP
JOB NO. 17081	DATE: MAY 2019

SHEET:  
**E-2.1**  
OF: NINE

P.E. JOB #1934

**IPAYNE**  
*Engineering Inc.*  
Consulting Engineers  
1823 E. Center  
Pocatello, Idaho 83201  
Tel (208) 232-4439  
www.payneengineeringinc.com

## EAST FLOOR PLAN - MECHANICAL CONNECTIONS

SCALE: 1/8" = 1' - 0"

0" 8" 16"

