

**A** INDIRECT DRAIN DETAIL NO SCALE

| PLUMBING LEGEND |   |
|-----------------|---|
| SYMBOL          | DESCRIPTION                               |
| V               | VENT                                      |
| VTR             | VENT THRU ROOF                            |
| CO              | CLEANOUT                                  |
| MCO             | WALL CLEANOUT                             |
| COTG            | CLEANOUT TO GRADE                         |
| AFF             | ABOVE FINISHED FLOOR                      |
| (1)             | PLAN NOTE                                 |
| (EQ)            | EQUIPMENT SYMBOL                          |
| ---             | SOIL OR WASTE PIPING                      |
| ----            | VENT LINE PIPING                          |
| -----           | DOMESTIC COLD WATER PIPING                |
| -----           | DOMESTIC HOT WATER PIPING                 |
| -----           | HOT WATER RECIRC. PIPING                  |
| -----           | TEMPERED WATER PIPING                     |
| G               | GAS PIPING                                |
| HFG             | HIGH PRESSURE GAS PIPING                  |
| G               | UNDERFLOOR GAS LINE IN SLEEVE             |
| RDL             | ROOF DRAIN LEADER PIPING                  |
| RDO             | ROOF DRAIN OVERFLOW PIPING                |
| CD              | CONDENSATE DRAIN LINE                     |
| →               | DIRECTION OF FLOW INDICATOR               |
| ⊗               | GATE VALVE                                |
| ⊕               | BALL VALVE                                |
| ⊘               | CHECK VALVE                               |
| ⊙               | CIRCUIT SETTER                            |
| ◆               | GAS LINE PRESSURE REGULATOR               |
| ⊥               | STRAINER                                  |
| ⊥               | PIPE DROP                                 |
| ⊥               | PIPE RISE                                 |
| ⊗               | PRESSURE REDUCING VALVE                   |
| ⊗               | REDUCED PRESSURE BACKFLOW PREVENTER       |
| ⊗               | MOTORIZED 3 WAY MIXING OR DIVERTING VALVE |
| ⊗               | 2 POSITION MOTORIZED VALVE                |
| ⊕               | ELECTRIC ALARM GONG                       |
| ⊕               | FIRE DEPARTMENT SIAMESE CONNECTION        |
| FAV             | FIRE SPRINKLER RISER VALVE                |

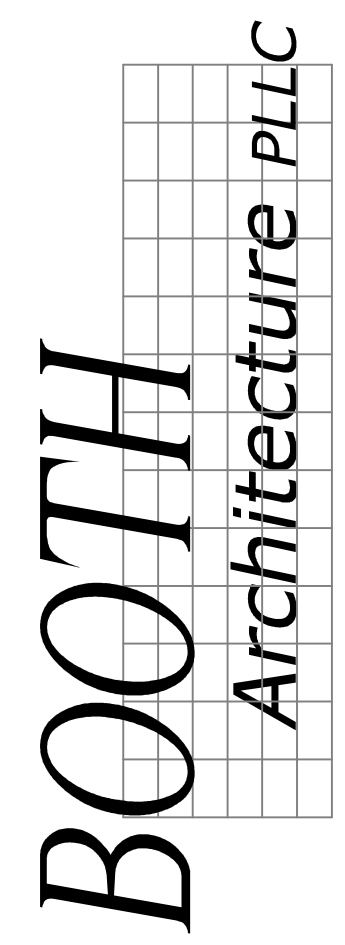
| PLUMBING FIXTURE SCHEDULE |  |      |      |               |        |
|---------------------------|--|------|------|---------------|--------|
| SYM.                      | DESCRIPTION  | HOT  | COLD | WASTE         | VENT   |
| (GS-1)                    | CLASSROOM SINK - ELKAY MODEL PSDKAD251C 'CELEBRITY' STAINLESS STEEL SINK WITH LK20285A3L3C HI-ARC FAUCET, LK35 DRAIN, LK1414 BUBBLER, 1/2" CM STOP, AND 1-1/2" P-TRAP.   | ---  | 1/2" | 1-1/2"        | 1-1/2" |
| (DF-1)                    | BH-LEVEL DRINKING FOUNTAIN WITH BOTTLE FILLER - ELKAY MODEL L25TL8W6LK WITH BOTTLE FILLER STATION AND FILTER, FRONT BAR OPERATORS, 1/2" STOP, 1-1/2" P-TRAP, AND FLEX-GUARD SAFETY BUBBLE.   | ---  | 1/2" | 1-1/2"        | 1-1/2" |
| (DWH-1)                   | DISHWASHER - FURNISHED BY KITCHEN EQUIPMENT SUPPLIER AND INSTALLED BY PLUMBING CONTRACTOR. ROUGH-IN AND CONNECT 1" HOT WATER LINE WITH SHUT-OFF VALVE. RUN DRAIN LINE TO FLOOR SINK. FIELD VERIFY EXACT SIZE AND LOCATION OF HOT WATER CONNECTION.               | 1"   | ---  | TO FLOOR SINK | ---    |
| (FD-1)                    | 2" FLOOR DRAIN - ZURN Z419B-P WITH 5# TYPE 'B' NICKEL-BRONZE STRAINER TRAP PRIMER CONNECTION, AND 2" DEEP SEAL P-TRAP. RUN 1/2" COLD WATER LINE TO TRAP PRIMER.  | ---  | ---  | 2"            | 2"     |
| (FS-1)                    | FLOOR SINK - ZURN Z-100-2 WITH HALF GRATE DOME STRAINER, WHITE ENAMEL FINISH AND 3" DEEP SEAL P-TRAP WITH TRAP PRIMER CONNECTION. RUN 1/2" COLD WATER LINE TO TRAP PRIMER.   | ---  | ---  | 3"            | 2"     |
| (GT-1)                    | GREASE TRAP - ZURN Z110, SIZE 500 WITH 20 GPM FLOW RATE AND 40 POUND GREASE CAPACITY. RECESS TRAP WITH LID FLUSH WITH FINISHED FLOOR. REFER TO DETAIL G/P3.1 FOR TYPICAL INSTALLATION.   | ---  | ---  | 3"            | 3"     |
| (HB-1)                    | EXTERIOR HOSE BIBB - ZURN Z-1910 ECOLOTROL™ WITH REMOVABLE HANDLE AND VACUUM BREAKER, LENGTH TO SUIT WALL THICKNESS.   | ---  | ---  | 4"            | 3"     |
| (JS-1)                    | JANITOR SINK - KOHLER K6710 'WHITBY' WITH K-8440 WIRE RIM GUARD, K9142 PERFORATED STRAINER AND 2" DEEP SEAL P-TRAP. MOUNT K-8408-CP FAUCET ON WALL COMPLETE WITH VACUUM BREAKER, WALL BRACE AND PAIL HOOK. PROVIDE 5'-0" RUBBER HOSE AND WALL HOOK WITH FIXTURE. | 1/2" | 1/2" | 2"            | 2"     |
| (L-1)                     | WALL HUNG LAVATORY - KOHLER K-2032-N (SIZE 20x18) 'GREENWICH' WITH K-T115 OPEN GRID STRAINER, SLOAN EBF-85 INFRARED FAUCET (BATTERY), 1/2" STOPS, 1-1/2" P-TRAP, AND WALL CARRIER. PROVIDE INSULATING JACKET ON WASTE AND HOT WATER LINES.                       | 1/2" | 1/2" | 1-1/2"        | 1-1/2" |
| (RP-1)                    | HOT WATER RECIRC. PUMP - B46 SERIES LR-20BF 'LITTLE RED' WITH 4 GPM FLOW AT 0' HEAD AND 3/4" LINE CONNECTIONS. MOUNT NEAR WATER HEATER. REFER TO DETAILS C/P3.1 AND F/P3.1 FOR TYPICAL PIPE CONNECTIONS TO WATER HEATER.   | 3/4" | ---  | ---           | ---    |
| (S-1)                     | SINGLE COMPARTMENT SINK - ELKAY MODEL LR-3321 WITH LK800HA10T6 HI-ARC FAUCET WITH WRIST BLADE HANDLES, LK-35 DUO-STRAINER, 1/2" STOPS, AND 1-1/2" P-TRAP.  | 1/2" | 1/2" | 1-1/2"        | 1-1/2" |
| (S-2)                     | DOUBLE COMPARTMENT SINK - ELKAY MODEL LR-3321 WITH LK800HA10T6 HI-ARC FAUCET WITH WRIST BLADE HANDLES, LK-35 DUO-STRAINER, 1/2" STOPS, AND 1-1/2" P-TRAP.  | 1/2" | 1/2" | 1-1/2"        | 1-1/2" |

| PLUMBING FIXTURE SCHEDULE |  |          |          |                      |        |
|---------------------------|--|----------|----------|----------------------|--------|
| SYM.                      | DESCRIPTION  | HOT      | COLD     | WASTE                | VENT   |
| (S-3)                     | 3 COMPARTMENT SINK - ELKAY MODEL LTR5422106 WITH (3) DUO-STRAINERS, (2) LK406HA08L2 HIGH ARC SWINGING FAUCET, AND 1/2" STOPS. RUN DRAIN LINE TO FLOOR SINK.  | (2) 1/2" | (2) 1/2" | 2" TO FLOOR SINK     | ---    |
| (S-4)                     | HAND WASH SINK - ELKAY MODEL ELY22195AGG WALL MOUNTED STAINLESS STEEL LAVATORY WITH LKBT21C INFRARED SENSOR FAUCET (BATTERY), PERFORATED STRAINER, 1/2" STOPS AND 1-1/2" P-TRAP. FURNISH WALL MOUNTING BRACKET WITH FIXTURE.   | 1/2"     | 1/2"     | 1-1/2"               | 1-1/2" |
| (S-5)                     | PREP SINK - ELKAY MODEL DLRQ202210 WITH DUO-STRAINER, LK406HA08L2 HIGH ARC SWINGING FAUCET, AND 1/2" STOPS. RUN DRAIN LINE TO FLOOR SINK.  | 1/2"     | 1/2"     | 2-1/2" TO FLOOR SINK | ---    |
| (TP-1)                    | TRAP PRIMER FOR SINGLE DRAIN - ZURN Z-1022XL IN-LINE PRIMER. MOUNT BELOW LAVATORY OR SINK AS SHOWN ON PLANS AND RUN 1/2" COLD WATER LINE BELOW FLOOR TO SINGLE FLOOR DRAIN. REFER TO DETAIL M/P3.1 FOR TYPICAL INSTALLATION.   | ---      | 1/2"     | ---                  | ---    |
| (TP-2)                    | TRAP PRIMER FOR MULTIPLE DRAINS - ZURN Z-1020XL-5-CM ELECTRONIC TRAP PRIMER SYSTEM. MOUNT RECESSED IN WALL WITH COVER. RUN 1/2" COLD WATER LINE TO EACH TRAP AS SHOWN ON FLOOR PLANS. REFER TO DETAIL L/P3.1 FOR INSTALLATION. | ---      | 3/4"     | ---                  | ---    |
| (U-1)                     | URINAL - KOHLER K-4484-T 'FRESHMAN' WITH SLOAN 8180 'OPTIMA' AUTOMATIC FLUSH VALVE AND WALL CARRIER. REFER TO ARCHITECTURAL DRAWINGS FOR MOUNTING HEIGHTS.   | ---      | 3/4"     | 2"                   | 2"     |
| (WC-1)                    | ADA WATER CLOSET - KOHLER MODEL K-4368 'HIGHCLIFF' WITH K-4610C WHITE OPEN FRONT SEAT, BOLT CAPS AND SLOAN 'OPTIMA' 8111-1.6 AUTOMATIC FLUSH VALVE.  | ---      | 1"       | 4"                   | 2"     |
| (WC-2)                    | WATER CLOSET - KOHLER MODEL K-4350 'WELLCOME' WITH K-4610C WHITE OPEN FRONT SEAT, BOLT CAPS AND SLOAN 'OPTIMA' 8111-1.6 AUTOMATIC FLUSH VALVE.   | ---      | 1"       | 4"                   | 2"     |
| (WH-1)                    | TANK-LESS WATER HEATER - EEMAX MODEL EX3208 WITH 3.0 KM HEATER, 1/2 GPM FLOW WITH 41°F TEMPERATURE RISE. (208/60/1) REFER TO DETAIL B/P3.1.  | ---      | 1/2"     | ---                  | ---    |
| (WH-2)                    | TANK TYPE WATER HEATER - AO SMITH MODEL ECT-40 WITH 40 GALLON CAPACITY, AMTROL ST-5 THERMAL EXPANSION TANK, HEAT TRAP NIPPLES, (2) NON-SIMULTANEOUS ELEMENTS, AND T4P RELIEF VALVE. (208/60/1) REFER TO DETAIL C/P3.1.         | 3/4"     | 3/4"     | ---                  | ---    |
| (WH-3)                    | GAS FIRED WATER HEATER - AO SMITH MODEL GFDX-TSL WITH 75 GALLON CAPACITY, AMTROL ST-5 THERMAL EXPANSION TANK, HEAT TRAP NIPPLES, 10,000 BTU INPUT, T4P RELIEF VALVE, AND (2) 3" VENTS UP THRU ROOF. REFER TO DETAIL F/P3.1.    | 3/4"     | 3/4"     | ---                  | ---    |

CONTRACTOR

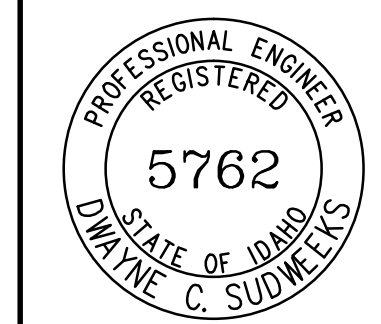
project for:  
**Grace School District # 148**  
**New Elementary School**  
 Fourth West Street  
 Grace, Idaho

340 East Clark Street, Suite A  
 Pocatello, Idaho 83201  
 Phone (208) 233-4548  
 Fax (208) 233-0263  
 email [ted@bootharchitecture.com](mailto:ted@bootharchitecture.com)



ORIGINAL DRAWING SIGNED BY: DWAYNE C. SUDWEEKS  
 DATE ORIGINAL SIGNED: March 20, 2019  
 ORIGINAL ON FILE AT ENGINEERED SYSTEMS ASSOCIATES  
 1855 EAST CENTER, POCATELLO, IDAHO 83201

**Engineered Systems Associates**  
 1355 EAST CENTER  
 POCATELLO, IDAHO 83201  
 PHONE: (208) 233-0501  
 FAX: (208) 233-0529  
 EMAIL: [eso@engsystems.com](mailto:eso@engsystems.com)  
 ESA JOB NUMBER: 17078



Plumbing Fixture Schedule  
 Date 3/22/19  
 Sheet No. P3.3