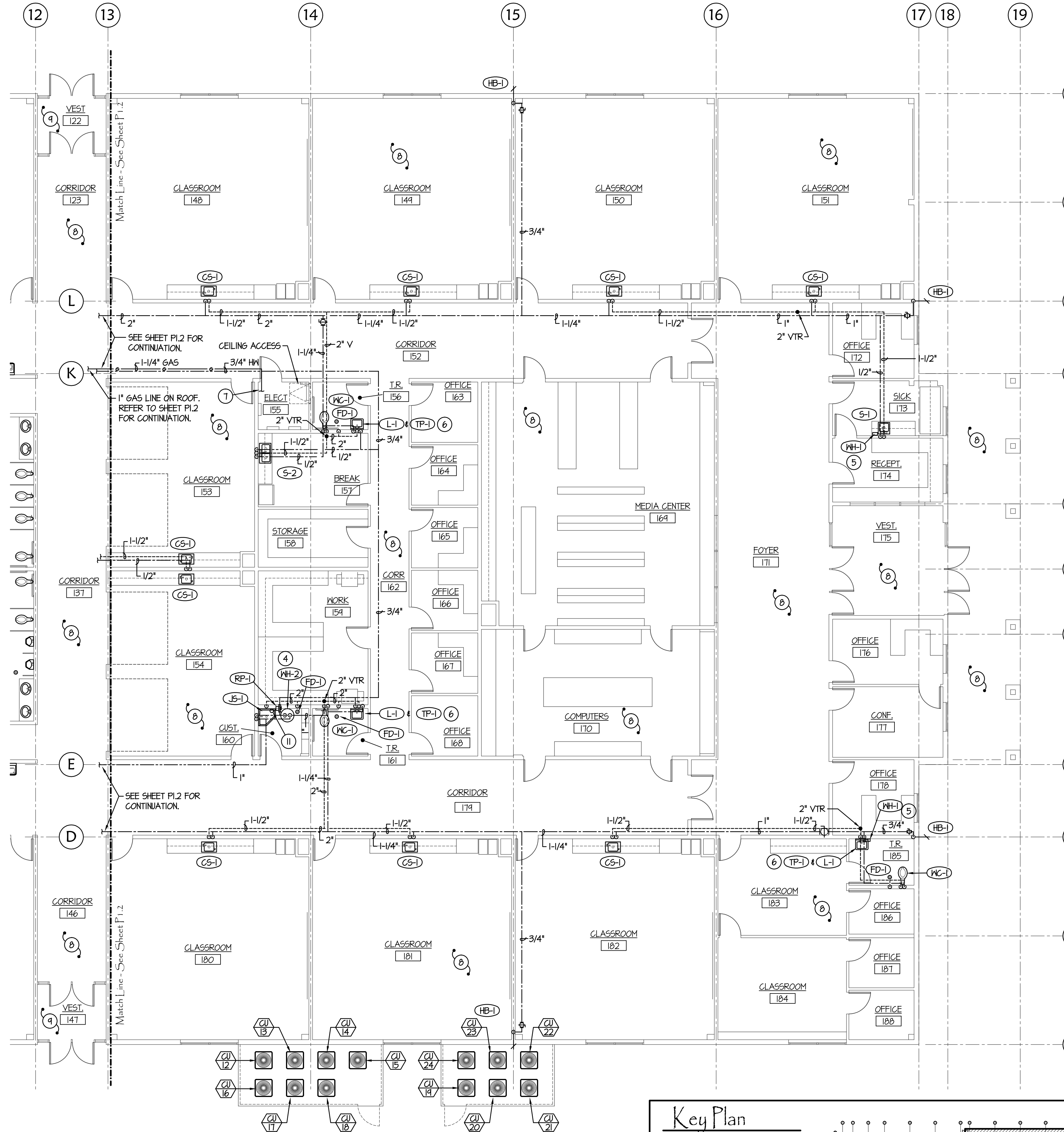
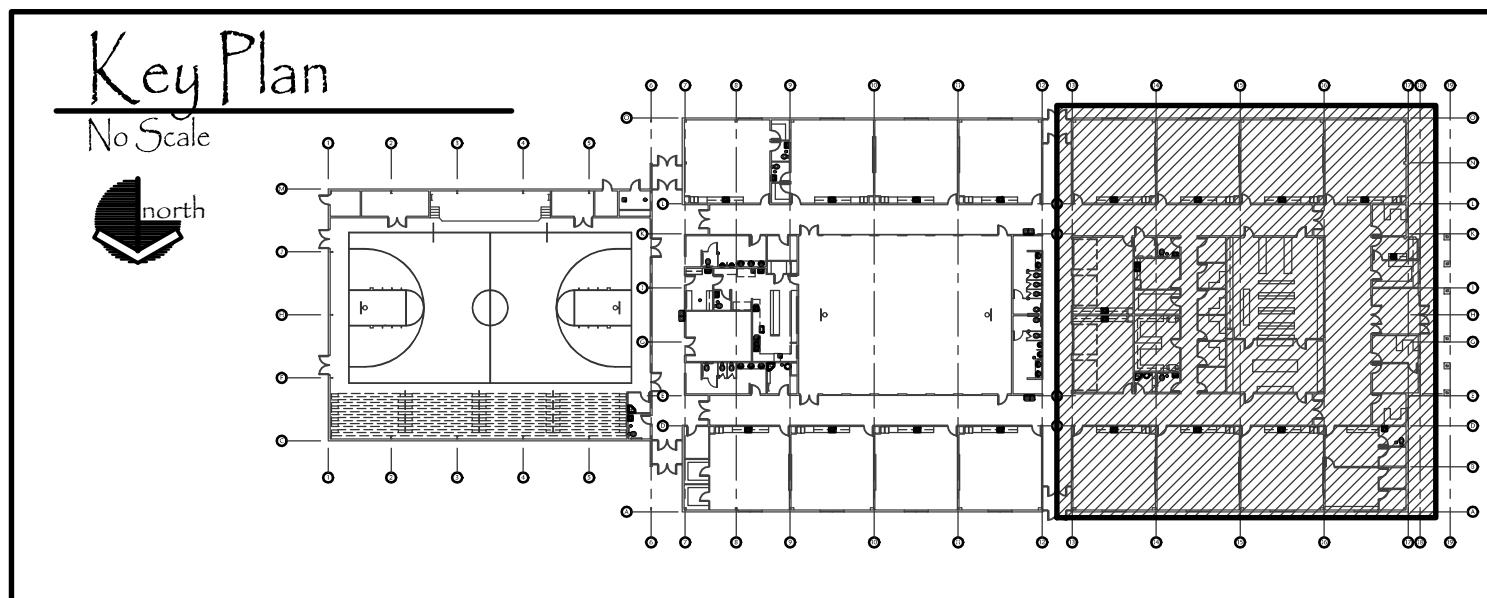


Mezzanine Plumbing Plan - Area C
Scale: 1/8" = 1'-0"



Plumbing Floor Plan - Area C
Scale: 1/8" = 1'-0"



- PLAN NOTES:**
- FURNACE PROVIDED AND INSTALLED BY DIVISION 23. DIVISION 22 TO ROUGH-IN AND CONNECT GAS LINE WITH SHUT-OFF VALVE AND FLEXIBLE HOSE. REFER TO DETAIL A/P3.1 FOR TYPICAL GAS LINE CONNECTION. CONNECT CONDENSATE DRAIN LINE WITH TRAP AND RUN CONDENSATE DRAIN LINE ALONG WALL. (REFER TO NOTES 10 & 11) REFER TO DETAIL D/P3.1 FOR TYPICAL TRAP INSTALLATION.
 - PROVIDE PRESSURE REGULATOR (2 psi TO 5 psi) IN 1-1/2" HIGH PRESSURE GAS LINE. VENT TO OUTSIDE AS RECOMMENDED BY MANUFACTURER. REFER TO DETAIL K/P3.1 FOR TYPICAL INSTALLATION.
 - RUN GAS LINE IN CEILING SPACE. COORDINATE WITH DUCTWORK. REFER TO SHEET M1.3 FOR DUCTWORK IN THIS AREA.
 - PROVIDE AND INSTALL NEW ELECTRIC WATER HEATER AS SPECIFIED COMPLETE WITH THERMAL EXPANSION TANK, MIXING VALVE AND RECIRC. PUMP. REFER TO DETAIL C/P3.1 FOR TYPICAL PIPING CONNECTIONS.
 - PROVIDE TANK-LESS WATER HEATER AS SPECIFIED. MOUNT HEATER BELOW SINK AND CONNECT TO 1/2" COLD WATER LINE. REFER TO DETAIL B/P3.1 FOR TYPICAL LINE CONNECTIONS TO WATER HEATER AND TO SINK.
 - PROVIDE TRAP PRIMER AS SPECIFIED BELOW LAVATORY. DROP 1/2" COLD WATER LINE DOWN THRU FLOOR AND CONNECTION TO FLOOR DRAIN IN TOILET ROOM. REFER TO DETAIL K/P3.1 FOR TYPICAL INSTALLATION.
 - REFER TO MEZZANINE PLUMBING PLAN (THIS SHEET) FOR CONTINUATION OF PIPING.
 - ENTIRE BUILDING TO BE FIRE SPRINKLED TO MEET NFPA 13 CODE REQUIREMENTS. FIRE SPRINKLER CONTRACTOR TO COORDINATE HEAD AND PIPING LOCATIONS WITH ALL OTHER TRADES. DO NOT LOCATE HEADS AND/OR PIPING OVER ACCESS HATCHES, IN FRONT OF EQUIPMENT CLEARANCE SPACE, BELOW LIGHT FIXTURES, ETC. REFER TO DETAILS ON SHEET P3.2 FOR TYPICAL COORDINATION DISTANCES AND SUPPORTS.
 - PROVIDE DRY FIRE SPRINKLER HEADS IN UNHEATED VESTIBULES.
 - RUN CONDENSATE DRAIN LINE ALONG MEZZANINE WALLS. KEEP AS HIGH AS POSSIBLE AND GRADE AT 1/4" SLOPE PER FOOT OF LENGTH. SUPPORT PIPING AT 48" MAXIMUM INTERVALS.
 - DROP 1-1/4" CONDENSATE DRAIN LINE DOWN THRU MEZZANINE FLOOR. RUN PIPING THRU CEILING SPACE TO JANITOR SINK. REFER TO DETAIL A/P3.1 FOR TYPICAL TERMINATION OF DRAIN LINE IN SINK.
 - REFRIGERANT LINES TO RUN THRU CEILING SPACE BY MECHANICAL CONTRACTOR. COORDINATE WITH DUCTWORK. SEE SHEETS M1.1 AND M1.2 FOR CONTINUATION OF LINES AND FOR DUCTWORK.
 - REFRIGERANT LINES FURNISHED AND INSTALL BE MECHANICAL CONTRACTOR. (LINES SHOWN HERE FOR CLARITY) REFER TO DETAIL A/M1.1 FOR TYPICAL PIPING CONNECTIONS. PIPING TO BE RUN OVER HEAD.

CONTRACTOR

project for:
Grace School District # 148
New Elementary School
 Fourth West Street
 Grace, Idaho

340 East Clark Street, Suite A
 Pocatello, Idaho 83201
 Phone (208) 233-4548
 Fax (208) 233-0263
 email ted@bootharchitecture.com

BOOTH
 Architecture PLLC

ORIGINAL DRAWING SIGNED BY: DWAYNE C. SUDWEEKS
 DATE ORIGINAL SIGNED: March 20, 2014
 ORIGINAL ON FILE AT ENGINEERED SYSTEMS ASSOCIATES
 1935 EAST CENTER, POCATELLO, IDAHO 83201

PROFESSIONAL ENGINEER
 REGISTERED
 5762
 STATE OF IDAHO
 DWAYNE C. SUDWEEKS

Engineered Systems Associates
 1355 EAST CENTER
 POCATELLO, IDAHO 83201
 PHONE: (208) 233-0501
 FAX: (208) 233-0529
 EMAIL: eso@engsystems.com
 ESA JOB NUMBER: 17078

Plumbing Floor Plan - Area C
 Date 3/22/19
 Sheet No. P1.3