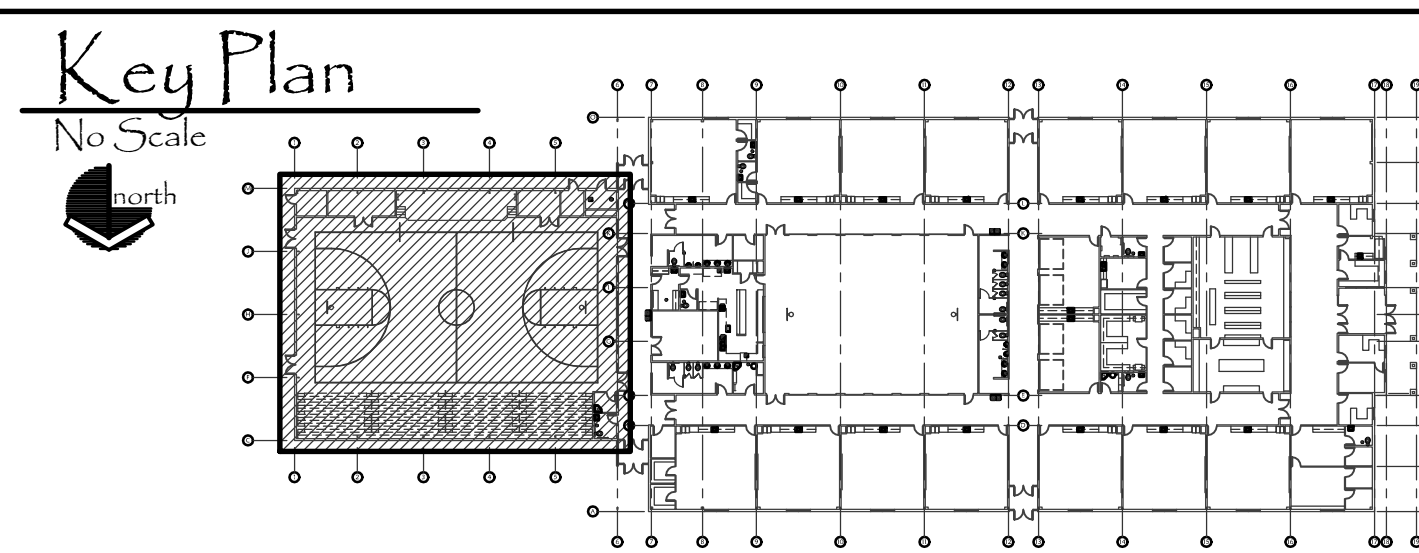


Plumbing Floor Plan - Area A
Scale: 1/8" = 1'-0"



PLAN NOTES:

- 1 RISE 2-1/2" COLD WATER SERVICE LINE UP THRU FLOOR AND CONNECT TO PRESSURE REDUCING STATION. REFER TO DETAIL EPF.1 FOR TYPICAL PIPING CONNECTIONS. RISE 2-1/2" WATER LINE UP IN FIRE RISER ROOM AND RUN ABOVE CEILING TO BUILDING FIXTURES AS SHOWN.
- 2 RISE 6" FIRE WATER LINE UP THRU FLOOR AND CONNECT TO FIRE RISER AND ALARM VALVE. REFER TO DETAIL EPF.2 FOR TYPICAL PIPING CONNECTIONS. MOUNT SIAMESE FIRE DEPARTMENT CONNECTIONS AND ELECTRIC ALARM GONG ON EXTERIOR WALL.
- 3 GAS METER BY LOCAL GAS COMPANY. SIZE METER FOR 3,000,000 BTU WITH 2 PSI DISCHARGE PRESSURE. DESIGN CRITERIA = 400' DEVELOPED LENGTH WITH 1 CFH PER 1000 BTU.
- 4 RISE 2" GAS LINE UP IN STORAGE ROOM TO ABOVE CEILING. RUN ABOVE ELECTRICAL ROOM AND FIRE RISER ROOM AS SHOWN. COORDINATE GAS LINE WITH OTHER PIPING, ELECTRICAL CONDUITS, AND EQUIPMENT.
- 5 EXTEND 2" GAS LINE (2 PSI) THRU WALL ABOVE CORRIDOR CEILING. SEAL WALL PENETRATION TIGHT AND PROVIDE ESCUTCHEON PLATE. ALL GAS PIPING TO BE RUN ABOVE CEILING UNLESS NOTED OTHERWISE.
- 6 PROVIDE TRAP PRIMER AS SPECIFIED BELOW LAVATORY. DROP (2) 1/2" COLD WATER LINES DOWN THRU FLOOR AND CONNECTION TO FLOOR DRAINS IN TOILET ROOM AND IN LOCKER ROOM. REFER TO DETAIL KFP.1 FOR TYPICAL INSTALLATION.
- 7 ENTIRE BUILDING TO BE FIRE SPRINKLED TO MEET NFPA 13 CODE REQUIREMENTS. FIRE SPRINKLER CONTRACTOR TO COORDINATE HEAD AND PIPING LOCATIONS WITH ALL OTHER TRADES. DO NOT LOCATE HEADS AND/OR PIPING OVER ACCESS HATCHES, IN FRONT OF EQUIPMENT CLEARANCE SPACE, BELOW LIGHT FIXTURES, ETC. REFER TO DETAILS ON SHEET P.3.2 FOR TYPICAL COORDINATION DISTANCES AND SUPPORTS.
- 8 REFER TO SHEET P.1.2 FOR CONTINUATION OF PIPING.
- 9 PROVIDE DRY FIRE SPRINKLER HEADS IN UNHEATED VESTIBULES.

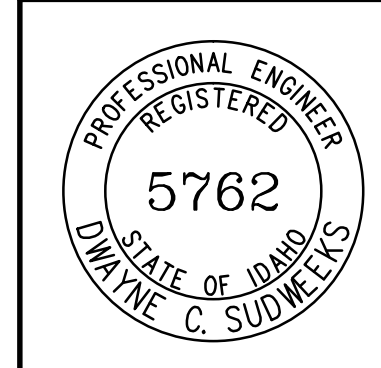
CONTRACTOR

project for:
Grace School District #148
New Elementary School
 Fourth West Street
 Grace, Idaho

340 East Clark Street, Suite A
 Pocatello, Idaho 83201
 Phone (208) 233-4548
 Fax (208) 233-0263
 email tex@bootharchitecture.com

BOOTH
 Architecture PLLC

ORIGINAL DRAWING SIGNED BY: DWAYNE C. SUDWEEKS
 DATE ORIGINAL SIGNED: March 20, 2019
 ORIGINAL ON FILE AT ENGINEERED SYSTEMS ASSOCIATES
 1355 EAST CENTER, POCA TELLO, IDAHO 83201



Engineered Systems Associates
 1355 EAST CENTER
 POCA TELLO, IDAHO 83201
 PHONE: (208) 233-0501
 FAX: (208) 233-0529
 EMAIL: esa@engsystems.com
 ESA JOB NUMBER: 17078

Plumbing Floor Plan - Area A
 Date 3/22/19
 Sheet No. P.1.1