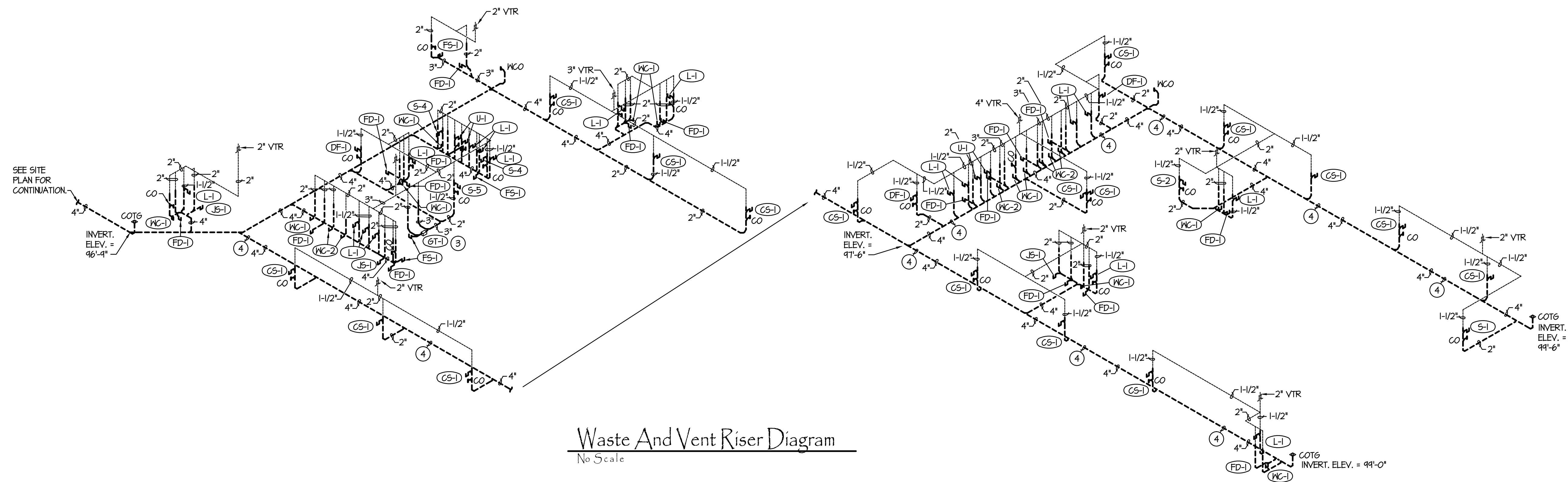


PLAN NOTES:

- 1 RISE 2-1/2" COLD WATER SERVICE LINE UP THRU FLOOR AND CONNECT TO PRESSURE REDUCING STATION. REFER TO DETAIL E/P3.1 FOR TYPICAL PIPING CONNECTIONS. RISE 2-1/2" WATER LINE UP IN FIRE RISER ROOM AND RUN LINES TO BUILDING FIXTURES ABOVE CEILING AS SHOWN. COORDINATE WITH DUCTWORK. REFER TO SHEET M.1 FOR DUCTWORK.
- 2 RISE 6" FIRE WATER LINE UP THRU FLOOR AND CONNECT TO FIRE RISER AND ALARM VALVE. REFER TO DETAIL J/P3.2 FOR TYPICAL PIPING CONNECTIONS.
- 3 PROVIDE AND INSTALL GREASE TRAP AS SPECIFIED. TRAP TO BE RECESSED WITH TOP FLUSH WITH FINISHED FLOOR. REFER TO DETAIL G/P3.1 FOR TYPICAL INSTALLATION.
- 4 GRADE MAIN 4" SEWER LINES AT 1/8" SLOPE PER FOOT. COORDINATE LOCATIONS WITH BUILDING FOOTINGS.

Plumbing Foundation Plan

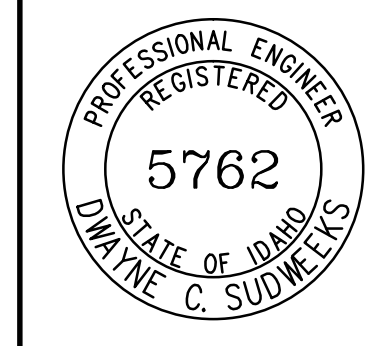
Scale: 1/16" = 1'-0"



Waste And Vent Riser Diagram

No Scale

ORIGINAL DRAWING SIGNED BY: DWAYNE C. SUDWEEKS
 DATE ORIGINAL SIGNED: March 20, 2014
 ORIGINAL ON FILE AT ENGINEERED SYSTEMS ASSOCIATES
 1895 EAST CENTER, POCAATELLO, IDAHO 83201

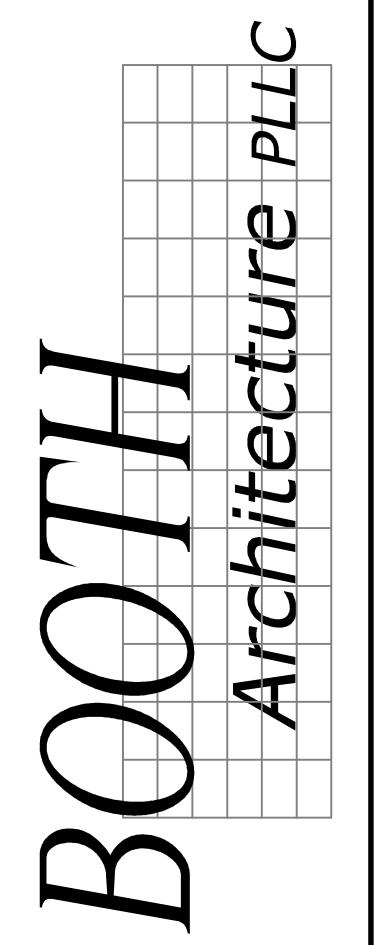


Engineered Systems Associates
 1355 EAST CENTER
 POCAATELLO, IDAHO 83201
 PHONE: (208) 233-0501
 FAX: (208) 233-0529
 EMAIL: esa@engsystems.com
 ESA JOB NUMBER: 17078

CONTRACTOR

project for:
Grace School District #148
New Elementary School
 Fourth West Street
 Grace, Idaho

340 East Clark Street, Suite A
 Pocatello, Idaho 83201
 Phone (208) 233-4548
 Fax (208) 233-0263
 email tek@bootharchitecture.com



Plumbing Foundation Plan

Date 3/22/19
 Sheet No. P1.0