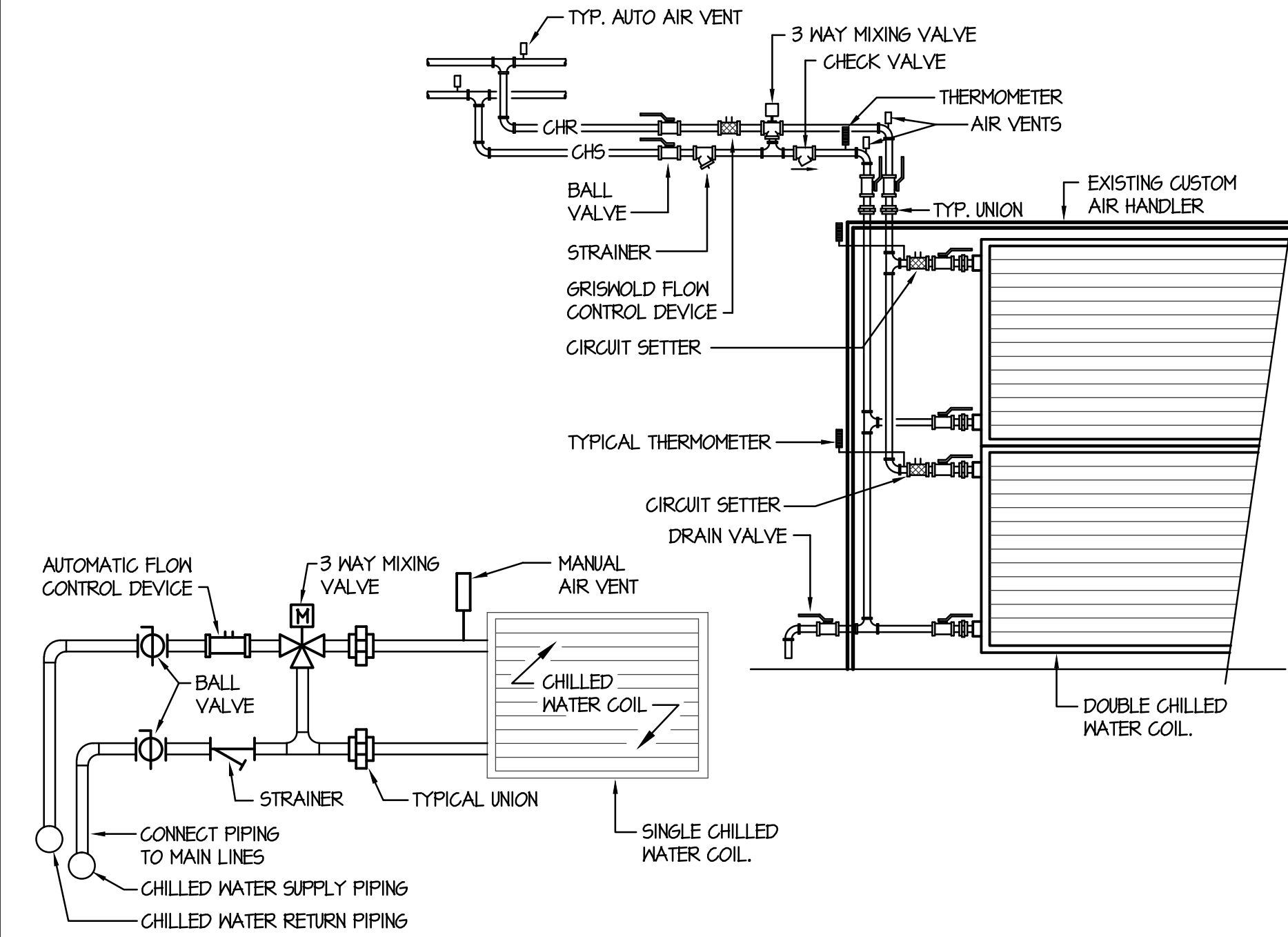


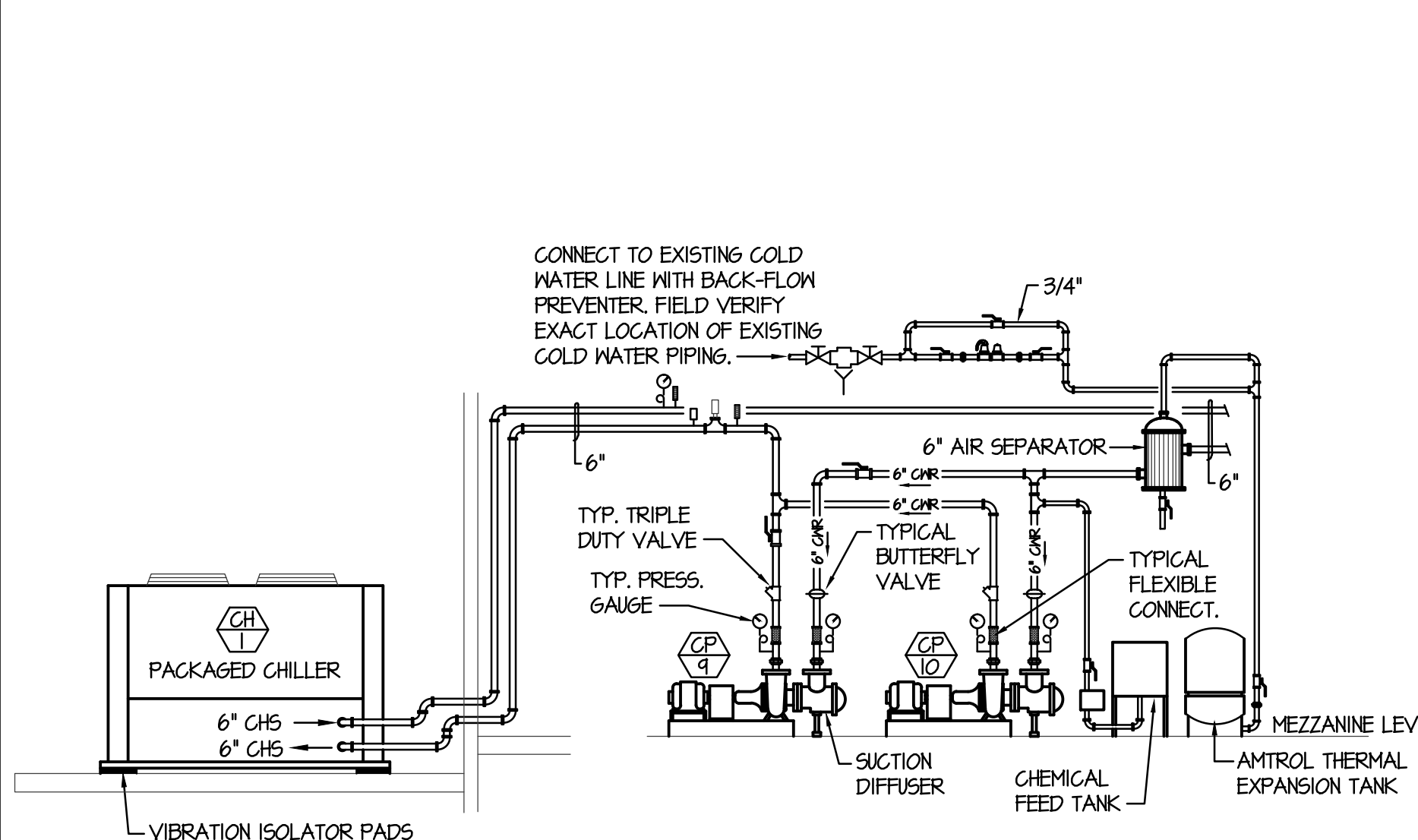
**A V.A.V. REHEAT BOX DETAIL**

NO SCALE



**B CHILLED WATER COIL PIPING DIAGRAMS**

NO SCALE



**C CHILLER PIPING DIAGRAM**

NO SCALE

**CHILLER SCHEDULE**

SYM.	TYPE	NOMINAL TONS	CHILLER								LBS	REMARKS
			ENT	LWT	CHAR	MCA	COP	MIN. GPM	MAX. GPM	PD		
CH 1	REMOTE AIR-COOLED	250	55°F	45°F	480/60/3	481	9.1	300	1000	24'	15,000#	TRANE MODEL RTAF-250 HIGH EFFICIENCY CHILLER (SIZED FOR 40% GLYCOL MIXTURE.)

**CIRCULATING PUMP SCHEDULE**

SYM.	TYPE	G.P.M.	HEAD	H.P.	CHAR	RPM	REMARKS	MANUFACTURER & MODEL NO.
CP 9	BASE MOUNTED	850	60'	20	480/60/3	1750	CHILLER CIRCULATING	B4G SERIES 1510, MODEL 58C WITH SUCTION DIFFUSER. SIZED FOR 40% GLYCOL. MOUNT ON INERTIA PADS. REFER TO DETAIL D/M.B.I
CP 10	BASE MOUNTED	850	60'	20	480/60/3	1750	CHILLER CIRCULATING	

**VOLUME BOX SCHEDULE**

SYM.	TYPE	SIZE (C.F.M.)	RANGE (C.F.M.)	AIR INLET	AIR OUTLET	MBH	HEATING SECTION			CONTROL	REMARKS ①		
							GPM	TR	ENT				
VB 1	VAV	1200	750-1500	14"	20x18	68.3	8	50°F	180°F	160°F	1-1/4"	DIGITAL	PRICE SDV-5014 COMPLETE WITH SP-300 SENSOR & 2 ROM HOT WATER COIL
VB 2	VAV	1200	750-1500	14"	20x18	68.3	8	50°F	180°F	160°F	1-1/4"	DIGITAL	PRICE SDV-5014 COMPLETE WITH SP-300 SENSOR & 2 ROM HOT WATER COIL
VB 3	VAV	1200	750-1500	14"	20x18	68.3	8	50°F	180°F	160°F	1-1/4"	DIGITAL	PRICE SDV-5014 COMPLETE WITH SP-300 SENSOR & 2 ROM HOT WATER COIL
VB 4	VAV	1200	750-1500	14"	20x18	68.3	8	50°F	180°F	160°F	1-1/4"	DIGITAL	PRICE SDV-5014 COMPLETE WITH SP-300 SENSOR & 2 ROM HOT WATER COIL
VB 5	VAV	600	300-900	10"	4x12	35.1	4	50°F	180°F	160°F	1-1/4"	DIGITAL	PRICE SDV-5010 COMPLETE WITH SP-300 SENSOR & 2 ROM HOT WATER COIL
VB 6	VAV	1200	750-1500	14"	20x18	68.3	8	50°F	180°F	160°F	1-1/4"	DIGITAL	PRICE SDV-5014 COMPLETE WITH SP-300 SENSOR & 2 ROM HOT WATER COIL
VB 7	VAV	1200	750-1500	14"	20x18	68.3	8	50°F	180°F	160°F	1-1/4"	DIGITAL	PRICE SDV-5014 COMPLETE WITH SP-300 SENSOR & 2 ROM HOT WATER COIL
VB 8	VAV	1200	750-1500	14"	20x18	68.3	8	50°F	180°F	160°F	1-1/4"	DIGITAL	PRICE SDV-5014 COMPLETE WITH SP-300 SENSOR & 2 ROM HOT WATER COIL
VB 9	VAV	1200	750-1500	14"	20x18	68.3	8	50°F	180°F	160°F	1-1/4"	DIGITAL	PRICE SDV-5014 COMPLETE WITH SP-300 SENSOR & 2 ROM HOT WATER COIL
VB 10	VAV	1200	750-1500	14"	20x18	68.3	8	50°F	180°F	160°F	1-1/4"	DIGITAL	PRICE SDV-5014 COMPLETE WITH SP-300 SENSOR & 2 ROM HOT WATER COIL
VB 11	VAV	1200	750-1500	14"	20x18	68.3	8	50°F	180°F	160°F	1-1/4"	DIGITAL	PRICE SDV-5014 COMPLETE WITH SP-300 SENSOR & 2 ROM HOT WATER COIL
VB 12	VAV	1200	750-1500	14"	20x18	68.3	8	50°F	180°F	160°F	1-1/4"	DIGITAL	PRICE SDV-5014 COMPLETE WITH SP-300 SENSOR & 2 ROM HOT WATER COIL
VB 13	VAV	1200	750-1500	14"	20x18	68.3	8	50°F	180°F	160°F	1-1/4"	DIGITAL	PRICE SDV-5014 COMPLETE WITH SP-300 SENSOR & 2 ROM HOT WATER COIL
VB 14	VAV	1600	300-900	16"	24x18	90.2	10	50°F	180°F	160°F	1-1/4"	DIGITAL	PRICE SDV-5016 COMPLETE WITH SP-300 SENSOR & 2 ROM HOT WATER COIL
VB 15	VAV	1200	750-1500	14"	20x18	68.3	8	50°F	180°F	160°F	1-1/4"	DIGITAL	PRICE SDV-5014 COMPLETE WITH SP-300 SENSOR & 2 ROM HOT WATER COIL
VB 16	VAV	1200	750-1500	14"	20x18	68.3	8	50°F	180°F	160°F	1-1/4"	DIGITAL	PRICE SDV-5014 COMPLETE WITH SP-300 SENSOR & 2 ROM HOT WATER COIL
VB 17	VAV	1200	750-1500	14"	20x18	68.3	8	50°F	180°F	160°F	1-1/4"	DIGITAL	PRICE SDV-5014 COMPLETE WITH SP-300 SENSOR & 2 ROM HOT WATER COIL
VB 18	VAV	1200	750-1500	14"	20x18	68.3	8	50°F	180°F	160°F	1-1/4"	DIGITAL	PRICE SDV-5014 COMPLETE WITH SP-300 SENSOR & 2 ROM HOT WATER COIL
VB 19	VAV	1200	750-1500	14"	20x18	68.3	8	50°F	180°F	160°F	1-1/4"	DIGITAL	PRICE SDV-5014 COMPLETE WITH SP-300 SENSOR & 2 ROM HOT WATER COIL
VB 20	VAV	1200	750-1500	14"	20x18	68.3	8	50°F	180°F	160°F	1-1/4"	DIGITAL	PRICE SDV-5014 COMPLETE WITH SP-300 SENSOR & 2 ROM HOT WATER COIL
VB 21	VAV	1200	750-1500	14"	20x18	68.3	8	50°F	180°F	160°F	1-1/4"	DIGITAL	PRICE SDV-5014 COMPLETE WITH SP-300 SENSOR & 2 ROM HOT WATER COIL
VB 22	VAV	1200	750-1500	14"	20x18	68.3	8	50°F	180°F	160°F	1-1/4"	DIGITAL	PRICE SDV-5014 COMPLETE WITH SP-300 SENSOR & 2 ROM HOT WATER COIL
VB 23	VAV	1200	750-1500	14"	20x18	68.3	8	50°F	180°F	160°F	1-1/4"	DIGITAL	PRICE SDV-5014 COMPLETE WITH SP-300 SENSOR & 2 ROM HOT WATER COIL
VB 24	VAV	1200	750-1500	14"	20x18	68.3	8	50°F	180°F	160°F	1-1/4"	DIGITAL	PRICE SDV-5014 COMPLETE WITH SP-300 SENSOR & 2 ROM HOT WATER COIL
VB 25	VAV	1200	750-1500	14"	20x18	68.3	8	50°F	180°F	160°F	1-1/4"	DIGITAL	PRICE SDV-5014 COMPLETE WITH SP-300 SENSOR & 2 ROM HOT WATER COIL
VB 26	VAV	600	300-900	10"	4x12	35.1	4	50°F	180°F	160°F	1-1/4"	DIGITAL	PRICE SDV-5010 COMPLETE WITH SP-300 SENSOR & 2 ROM HOT WATER COIL
VB 27	VAV	1200	750-1500	14"	20x18	68.3	8	50°F	180°F	160°F	1-1/4"	DIGITAL	PRICE SDV-5014 COMPLETE WITH SP-300 SENSOR & 2 ROM HOT WATER COIL
VB 28	VAV	1200	750-1500	14"	20x18	68.3	8	50°F	180°F	160°F	1-1/4"	DIGITAL	PRICE SDV-5014 COMPLETE WITH SP-300 SENSOR & 2 ROM HOT WATER COIL
VB 29	VAV	1200	750-1500	14"	20x18	68.3	8	50°F	180°F	160°F	1-1/4"	DIGITAL	PRICE SDV-5014 COMPLETE WITH SP-300 SENSOR & 2 ROM HOT WATER COIL
VB 30	VAV	1200	750-1500	14"	20x18	68.3	8	50°F	180°F	160°F	1-1/4"	DIGITAL	PRICE SDV-5014 COMPLETE WITH SP-300 SENSOR & 2 ROM HOT WATER COIL
VB 31	VAV	1200	750-1500	14"	20x18	68.3	8	50°F	180°F	160°F	1-1/4"	DIGITAL	PRICE SDV-5014 COMPLETE WITH SP-300 SENSOR & 2 ROM HOT WATER COIL
VB 32	VAV	1200	750-1500	14"	20x18	68.3	8	50°F	180°F	160°F	1-1/4"	DIGITAL	PRICE SDV-5014 COMPLETE WITH SP-300 SENSOR & 2 ROM HOT WATER COIL
VB 33	VAV	1200	750-1500	14"	20x18	68.3	8	50°F	180°F	160°F	1-1/4"	DIGITAL	PRICE SDV-5014 COMPLETE WITH SP-300 SENSOR & 2 ROM HOT WATER COIL
VB 34	VAV	1200	750-1500	14"	20x18	68.3	8	50°F	180°F	160°F	1-1/4"	DIGITAL	PRICE SDV-5014 COMPLETE WITH SP-300 SENSOR & 2 ROM HOT WATER COIL
VB 35	VAV	1200	750-1500	14"	20x18	68.3	8	50°F	180°F	160°F	1-1/4"	DIGITAL	PRICE SDV-5014 COMPLETE WITH SP-300 SENSOR & 2 ROM HOT WATER COIL
VB 36	VAV	1600	300-900	16"	24x18	90.2	10	50°F	180°F	160°F	1-1/4"	DIGITAL	PRICE SDV-5016 COMPLETE WITH SP-300 SENSOR & 2 ROM HOT WATER COIL
VB 37	VAV	600	300-900	10"	4x12	35.1	4	50°F	180°F	160°F	1-1/4"	DIGITAL	PRICE SDV-5010 COMPLETE WITH SP-300 SENSOR & 2 ROM HOT WATER COIL
VB 38	VAV	1200	750-1500	14"	20x18	68.3	8	50°F	180°F	160°F	1-1/4"	DIGITAL	PRICE SDV-5014 COMPLETE WITH SP-300 SENSOR & 2 ROM HOT WATER COIL
VB 39	VAV	1200	750-1500	14"	20x18	68.3	8	50°F	180°F	160°F	1-1/4"	DIGITAL	PRICE SDV-5014 COMPLETE WITH SP-300 SENSOR & 2 ROM HOT WATER COIL
VB 40	VAV	1200	750-1500	14"	20x18	68.3	8	50°F	180°F	160°F	1-1/4"	DIGITAL	PRICE SDV-5014 COMPLETE WITH SP-300 SENSOR & 2 ROM HOT WATER COIL
VB 41	VAV	1600	300-900	16"	24x18	90.2	10	50°F	180°F	160°F	1-1/4"	DIGITAL	PRICE SDV-5016 COMPLETE WITH SP-300 SENSOR & 2 ROM HOT WATER COIL
VB 42	VAV	1200	750-1500	14"	20x18	68.3	8	50°F	180°F	160°F	1-1/4"	DIGITAL	PRICE SDV-5014 COMPLETE WITH SP-300 SENSOR & 2 ROM HOT WATER COIL
VB 43	VAV	800	500-1200	12"	16x15	49.6	6	50°F	180°F	160°F	1-1/4"	DIGITAL	PRICE SDV-5008 COMPLETE WITH SP-300 SENSOR & 2 ROM HOT WATER COIL
VB 44	VAV	1200	750-1500	14"	20x18	68.3	8	50°F	180°F	160°F	1-1/4"	DIGITAL	PRICE SDV-5014 COMPLETE WITH SP-300 SENSOR & 2 ROM HOT WATER COIL
VB 45	VAV	1200	750-1500	14"	20x18	68.3	8	50°F	180°F	160°F	1-1/4"	DIGITAL	PRICE SDV-5014 COMPLETE WITH SP-300 SENSOR & 2 ROM HOT WATER COIL
VB 46	VAV	600	300-900	10"	4x12	35.1	4	50°F	180°F	160°F	1-1/4"	DIGITAL	PRICE SDV-5010 COMPLETE WITH SP-300 SENSOR & 2 ROM HOT WATER COIL
VB 47	VAV	1200	750-1500	14"	20x18	68.3	8	50°F	180°F	160°F	1-1/4"	DIGITAL	PRICE SDV-5014 COMPLETE WITH SP-300 SENSOR & 2 ROM HOT WATER COIL
VB 48	VAV	1200	750-1500	14"	20x18	68.3	8	50°F	180°F	160°F	1-1/4"	DIGITAL	PRICE SDV-5014 COMPLETE WITH SP-300 SENSOR & 2 ROM HOT WATER COIL
VB 49	VAV	1200	750-1500	14"	20x18	68.3	8	50°F	180°F	160°F	1-1/4"	DIGITAL	PRICE SDV-5014 COMPLETE WITH SP-300 SENSOR & 2 ROM HOT WATER COIL
VB 50	VAV	600	300-900	10"	4x12	35.1	4	50°F	180°F	160°F	1-1/4"	DIGITAL	PRICE SDV-5010 COMPLETE WITH SP-300 SENSOR & 2 ROM HOT WATER COIL
VB 51	VAV	1200	750-1500	14"	20x18	68.3	8	50°F	180°F	160°F	1-1/4"	DIGITAL	PRICE SDV-5014 COMPLETE WITH SP-300 SENSOR & 2 ROM HOT WATER COIL
VB 52	VAV	1200	750-1500	14"	20x18	68.3	8	50°F	180°F	160°F	1-1/4"	DIGITAL	PRICE SDV-5014 COMPLETE WITH SP-300 SENSOR & 2 ROM HOT WATER COIL
VB 53	VAV	600	300-900	10"	4x12	35.1	4	50°F	180°F	160°F	1-1/4"	DIGITAL	PRICE SDV-5010 COMPLETE WITH SP-300 SENSOR & 2 ROM HOT WATER COIL
VB 54	VAV	800	500-1200	12"	16x15	49.6	6	50°F	180°F	160°F	1-1/4"	DIGITAL	PRICE SDV-5008 COMPLETE WITH SP-300 SENSOR & 2 ROM HOT WATER COIL
VB 55	VAV	1600	300-900	16"	24x18	90.2	10	50°F	180°F	160°F	1-1/4"	DIGITAL	PRICE SDV-5016 COMPLETE WITH SP-300 SENSOR & 2 ROM HOT WATER COIL
VB 56	VAV	600	300-900	10"	4x12	35.1	4	50°F	180°F	160°F	1-1/4"	DIGITAL	PRICE SDV-5010 COMPLETE WITH SP-300 SENSOR & 2 ROM HOT WATER COIL
VB 57	VAV	600	300-900	10"	4x12	35.1	4	50°F	180°F	160°F	1-1/4"	DIGITAL	PRICE SDV-5010 COMPLETE WITH SP-300 SENSOR & 2 ROM HOT WATER COIL
VB 58	VAV	2400	1000-3000	16"	24x18	110.0	10	50°F	180°F	160°F	1-1/4"	DIGITAL	PRICE SDV-5016 COMPLETE WITH SP-300 SENSOR & 2 ROM HOT WATER COIL
VB 59	VAV	800	500-1200	12"	16x15	49.6	6	50°F	180°F	160°F	1-1/4"	DIGITAL	PRICE SDV-5008 COMPLETE WITH SP-300 SENSOR & 2 ROM HOT WATER COIL
VB 60	VAV	1600	300-900	16"	24x18	90.2	10	50°F	180°F	160°F	1-1/4"	DIGITAL	PRICE SDV-5016 COMPLETE WITH SP-300 SENSOR & 2 ROM HOT WATER COIL
VB 61	VAV	400	200-600	8"	12x10	24.3	4	50°F	180°F	160°F	3/4"	DIGITAL	PRICE SDV-5008 COMPLETE WITH SP-300 SENSOR & 2 ROM HOT WATER COIL
VB 62	VAV	1200	750-1500	14"	20x18	68.3	8	50°F	180°F	160°F	1-1/4"	DIGITAL	PRICE SDV-5014 COMPLETE WITH SP-300 SENSOR & 2 ROM HOT WATER COIL
VB 63	VAV	1200	750-1500	14"	20x18	68.3	8	50°F	180°F	160°F	1-1/4"	DIGITAL	PRICE SDV-5014 COMPLETE WITH SP-300 SENSOR & 2 ROM HOT WATER COIL
VB 64	VAV	1200	750-1500	14"	20x18	68.3	8	50°F	180°F	160°F	1-1/4"	DIGITAL	PRICE SDV-5014 COMPLETE WITH SP-300 SENSOR & 2 ROM HOT WATER COIL

① ALL VAV BOXES TO INCLUDE NEW HOSE KITS.

**EQUIPMENT LIST**

SYMBOL	DESCRIPTION
A	EXISTING CUSTOM AIR HANDLER WITH 38,400 CFM. (96 TONS) PROVIDE AND INSTALL NEW CHILLED WATER COIL IN EXISTING UNIT WITH 150 MBH CAPACITY, 45°F ENTERING WATER TEMP. AND 55°F LEAVING WATER TEMP. AND 240 GPM FLOW. SEE DETAIL B/M.B.I FOR TYPICAL PIPING CONNECTIONS. (4" LINES) PROVIDE AND INSTALL NEW FREEZE STAT FOR EXISTING AIR HANDLER. PIPE CONDENSATE DRAIN TO NEAREST FLOOR DRAIN OR FLOOR SINK.
B	EXISTING CUSTOM AIR HANDLER WITH 35,400 CFM. (90 TONS) PROVIDE AND INSTALL NEW CHILLED WATER COIL IN EXISTING UNIT WITH 1080 MBH CAPACITY, 45°F ENTERING WATER TEMP. AND 55°F LEAVING WATER TEMP. AND 270 GPM FLOW. SEE DETAIL B/M.B.I FOR TYPICAL PIPING CONNECTIONS. (4" LINES) PROVIDE AND INSTALL NEW FREEZE STAT FOR EXISTING AIR HANDLER. PIPE CONDENSATE DRAIN TO NEAREST FLOOR DRAIN OR FLOOR SINK.
C	EXISTING VERTICAL AIR HANDLER SERVING GYMNASIUM WITH 4000 CFM. (22-1/2 TONS EACH TIME) 2 EXISTING UNITS FOR TOTAL OF 45 TONS COOLING. PROVIDE AND INSTALL NEW CHILLED WATER COIL IN EXISTING UNIT WITH 270 MBH CAPACITY, 45°F ENTERING WATER TEMP. AND 55°F LEAVING WATER TEMP. AND 68 GPM FLOW. SEE DETAIL B/M.B.I FOR TYPICAL PIPING CONNECTIONS. PROVIDE AND INSTALL NEW FREEZE STAT FOR EXISTING AIR HANDLER. PIPE CONDENSATE DRAIN TO NEAREST FLOOR DRAIN OR FLOOR SINK.
D	EXISTING VERTICAL AIR HANDLER SERVING CAFETERIA WITH 12,000 CFM. (30 TONS) PROVIDE AND INSTALL NEW CHILLED WATER COIL IN EXISTING UNIT WITH 360 MBH CAPACITY, 45°F ENTERING WATER TEMP. AND 55°F LEAVING WATER TEMP. AND 90 GPM FLOW. SEE DETAIL B/M.B.I FOR TYPICAL PIPING CONNECTIONS. (3" LINES) PROVIDE AND INSTALL NEW FREEZE STAT FOR EXISTING AIR HANDLER. PIPE CONDENSATE DRAIN TO NEAREST FLOOR DRAIN OR FLOOR SINK.
E	EXISTING HORIZONTAL AIR HANDLER SERVICE KITCHEN WITH 6000 CFM. (15 TONS) PROVIDE AND INSTALL NEW CHILLED WATER COIL IN EXISTING UNIT WITH 180 MBH CAPACITY, 45°F ENTERING WATER TEMP. AND 55°F LEAVING WATER TEMP. AND 45 GPM FLOW. SEE DETAIL B/M.B.I FOR TYPICAL PIPING CONNECTIONS. (2" LINES) PROVIDE AND INSTALL NEW FREEZE STAT FOR EXISTING AIR HANDLER. PIPE CONDENSATE DRAIN TO NEAREST FLOOR DRAIN OR FLOOR SINK. (TYPICAL OF 2)
F	EXISTING HORIZONTAL AIR HANDLER SERVING LOCKER ROOMS WITH 3000 CFM. (7-1/2 TONS) PROVIDE AND INSTALL NEW CHILLED WATER COIL IN EXISTING UNIT WITH 90 MBH CAPACITY, 45°F ENTERING WATER TEMP. AND 55°F LEAVING WATER TEMP. AND 22 GPM FLOW. SEE DETAIL B/M.B.I FOR TYPICAL PIPING CONNECTIONS. (2" LINES) PROVIDE AND INSTALL NEW FREEZE STAT FOR EXISTING AIR HANDLER. PIPE CONDENSATE DRAIN TO NEAREST FLOOR DRAIN OR FLOOR SINK. (TYPICAL OF 2)
G	EXISTING VERTICAL FAN COIL SERVING MUSIC AND BAND ROOMS WITH 3000 CFM. (7-1/2 TONS) PROVIDE AND INSTALL NEW CHILLED WATER COIL IN EXISTING UNIT WITH 90 MBH CAPACITY, 45°F ENTERING WATER TEMP. AND 55°F LEAVING WATER TEMP. AND 22 GPM FLOW. SEE DETAIL B/M.B.I FOR TYPICAL PIPING CONNECTIONS. (2" LINES) PROVIDE AND INSTALL NEW FREEZE STAT FOR EXISTING AIR HANDLER. PIPE CONDENSATE DRAIN TO NEAREST FLOOR DRAIN OR FLOOR SINK. (TYPICAL OF 2)
H	EXISTING FAN COIL UNIT AND DX COOLING COIL TO REMAIN. EXIST