

CONSULTANTS:

**MECHANICAL ENGINEERING**  
 ENGINEERED SYSTEMS ASSOC.  
 1355 East Center  
 Pocatello, Idaho 83201  
 (208) 233-0501  
 Fax (801) 233-0529

**ELECTRICAL ENGINEERING**  
 PAYNE ENGINEERING INC.  
 1823 E. Center St.  
 Pocatello, Idaho 83201  
 (208) 232-4439  
 Fax (208) 232-1435

PROJECT: **MADISON MIDDLE SCHOOL A/C**  
 MADISON COUNTY SCHOOL DISTRICT # 921  
 REGBURG, IDAHO

DRAWING TITLE: **LARGE SCALE MECHANICAL ROOMS**

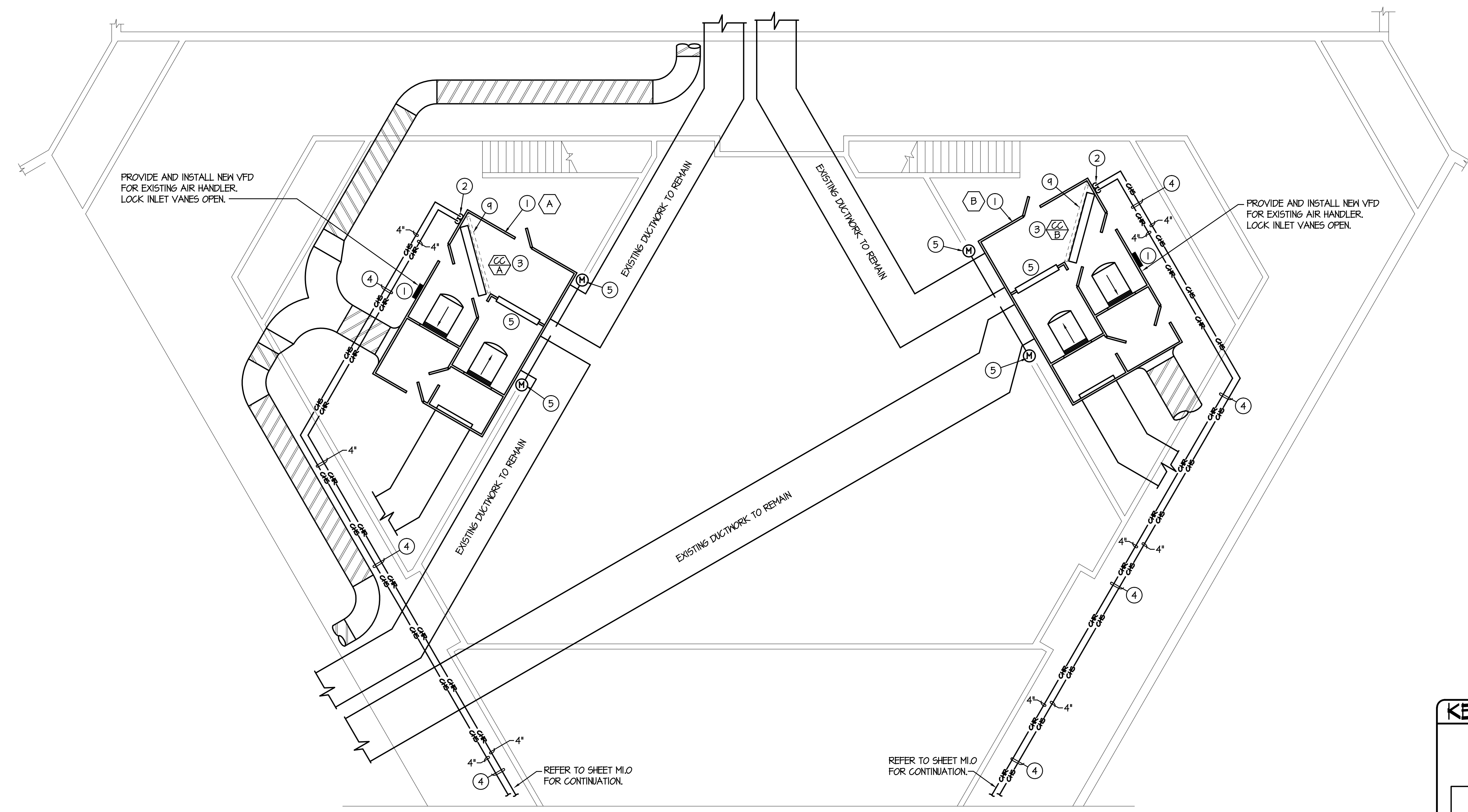
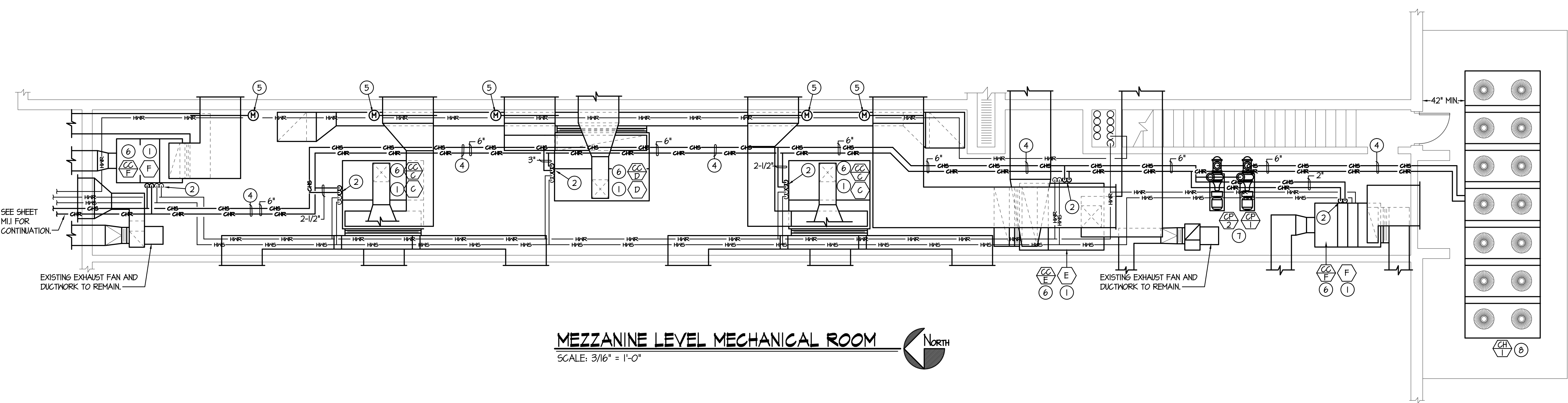
#	DATE	COMMENT

ORIGINAL DRAWING SIGNED BY: DWAYNE C. SUDWEEKS  
 DATE ORIGINAL SIGNED: Feb 15, 2019  
 ORIGINAL ON FILE AT ENGINEERED SYSTEMS ASSOCIATES  
 1355 EAST CENTER, POCATELLO, IDAHO 83201

PROFESSIONAL ENGINEER  
 REGISTERED  
 5762  
 STATE OF IDAHO  
 DWAYNE C. SUDWEEKS

**Engineered Systems Associates**  
 1355 EAST CENTER  
 POCATELLO, IDAHO 83201  
 PHONE: (208) 233-0501  
 FAX: (208) 233-0529  
 EMAIL: esa@engsystems.com  
 ESA JOB NUMBER: 16050

DRAWN BY:	JOB NO:
M. JENSEN	746
CHECKED BY:	DATE:
D. SUDWEEKS	FEB 2019
PLOT DATE: Feb 15, 2019	
DRAWING NO.	
FILE: 16050-M2.1.dwg	
<b>M2.1</b>	
OF	7



- PLAN NOTES:**
- EXISTING AIR HANDLER WITH HEATING COILS TO REMAIN. REMOVE ALL EXISTING PNEUMATIC CONTROLS FROM EQUIPMENT AND PROVIDE NEW DIGITAL CONTROLS AS REQUIRED FOR NEW BUILDING DDC SYSTEM. CONTRACTOR TO FIELD VERIFY EXACT LOCATIONS OF EXISTING EQUIPMENT. REMOVE ALL EXISTING PNEUMATIC TUBING WHERE ACCESSIBLE. CONTRACTOR TO PROVIDE AND INSTALL NEW CHILLED WATER COOLING COIL IN EXISTING UNIT AS SPECIFIED. REFER TO CHILLED WATER COIL PIPING DIAGRAM ON SHEET M3.1 FOR TYPICAL PIPE CONNECTIONS. PROVIDE NEW FREEZE STAT IN EACH AIR HANDLER. REFER TO SPECIFICATIONS.
  - REMOVE EXISTING PLENUM WALL OR UNIT CASING AS REQUIRED FOR NEW COOLING COIL. PROVIDE AND INSTALL NEW CHILLED WATER COOLING COIL AS SPECIFIED. MOUNT COIL IN EXISTING AIR HANDLER AS SHOWN AND CONNECT TO NEW CHILLED WATER PIPING. REFER TO SHEET M3.1 FOR TYPICAL PIPING CONNECTIONS. CONTRACTOR TO FIELD VERIFY EXACT DIMENSIONS OF EXISTING CUSTOM AIR HANDLER PRIOR TO BIDDING AND PROVIDE ALL SHEET METAL SLEEVES AND TRANSITIONS NECESSARY TO INSTALL NEW COIL.
  - DROP NEW CHILLED WATER LINES DOWN AND CONNECT TO NEW COOLING COIL INSIDE EXISTING CUSTOM AIR HANDLER. PROVIDE NEW HOLES THRU AIR HANDLER WALLS AS REQUIRED AND SEAL AROUND PIPING AIR TIGHT. REFER TO SHEET M3.1 FOR TYPICAL CHILLED WATER COIL PIPING CONNECTIONS. CONTRACTOR TO FIELD VERIFY EXACT DIMENSIONS OF EXISTING CUSTOM AIR HANDLER PRIOR TO BIDDING AND PROVIDE ALL SHEET METAL SLEEVES AND TRANSITIONS NECESSARY TO INSTALL NEW COIL. PLACE NEW COIL BEHIND EXISTING FILTER RACK.
  - RUN NEW CHILLED WATER LINES ABOVE EXISTING CEILING AS SHOWN ON SHEET M1.0. SUPPORT PIPING FROM ROOF STRUCTURE. FIELD COORDINATE ACTUAL ROUTING OF CHILLED WATER PIPING WITH BUILDING STRUCTURE, DUCTWORK AND MECHANICAL EQUIPMENT AND WITH OTHER PIPING.
  - REPLACE EXISTING PNEUMATIC OPERATED 24 VOLT ELECTRIC DAMPER AND MOTOR AS REQUIRED FOR NEW BUILDING DDC SYSTEM. CONTRACTOR TO FIELD VERIFY EXACT LOCATIONS OF EXISTING EQUIPMENT. REMOVE ALL EXISTING PNEUMATIC TUBING WHERE ACCESSIBLE. SEE SPECIFICATIONS.
  - PROVIDE NEW CHILLED WATER COIL SECTION TO MATCH EXISTING AIR HANDLER. REFER TO EQUIPMENT LIST ON SHEET M3.1 FOR DESCRIPTION OF EXISTING EQUIPMENT.
  - MOUNT NEW PUMPS ON INERTIA PADS. REFER TO CHILLED WATER PIPING DIAGRAM ON SHEET M3.1.
  - PROVIDE AND INSTALL NEW AIR COOLED CHILLER AS SPECIFIED. MOUNT CHILLER ON TOP OF STRUCTURAL MEZZANINE. REFER TO ARCHITECTURAL DRAWINGS. WITH VIBRATION ISOLATORS AT EACH SUPPORT POINT.
  - EXISTING FILTER RACK IN CUSTOM AIR HANDLER TO REMAIN. FIELD VERIFY EXISTING CONDITIONS AND EXISTING ACCESS TO FILTERS. MODIFY EXISTING FILTER RACK AS REQUIRED TO ACCESS FILTERS FROM OPPOSITE SIDE AS NEW COOLING COIL.

