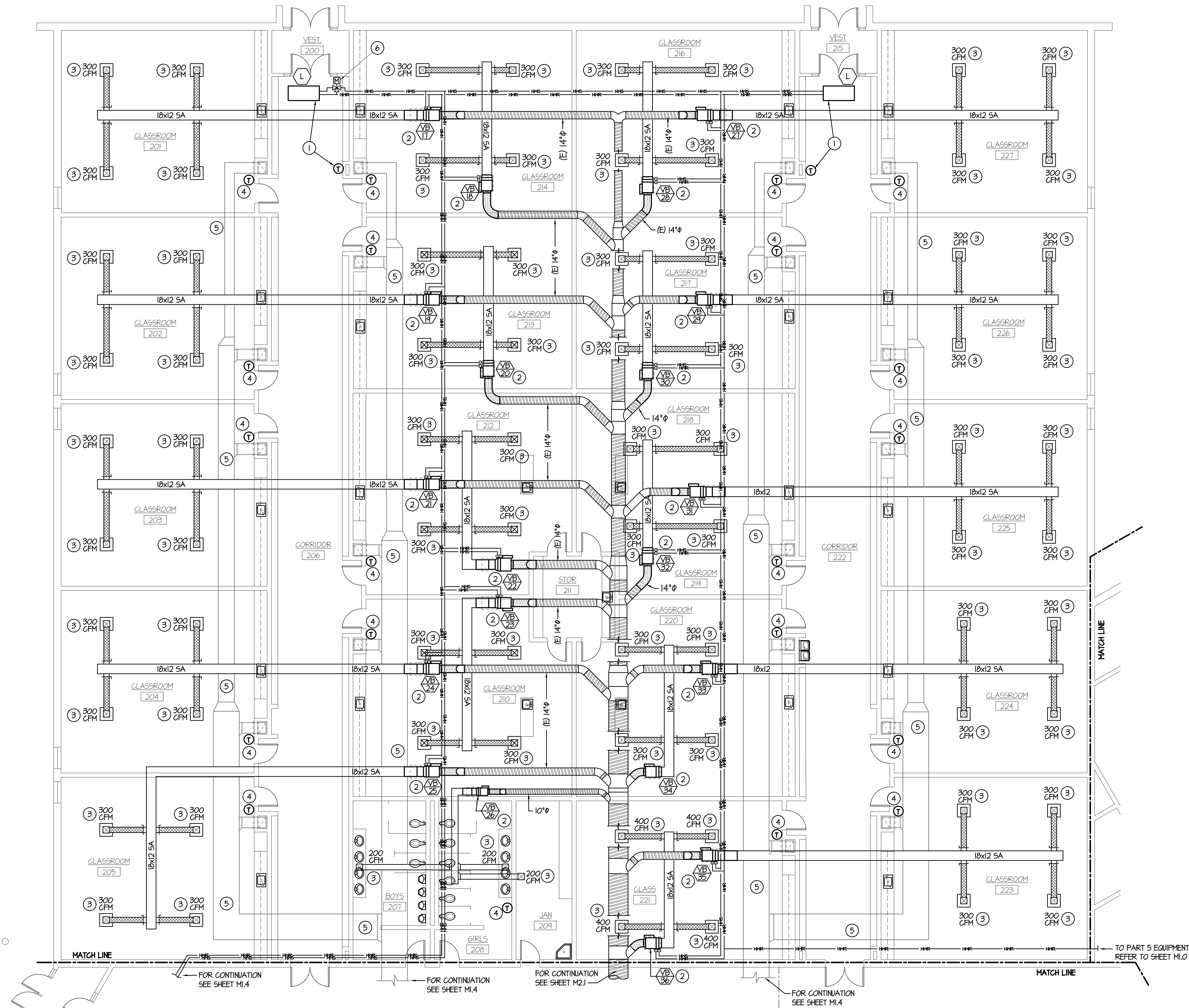
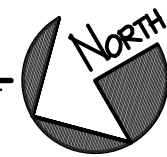


F:\16050 Madison Middle School Chiller\16050-M1.2.dwg Feb 15, 2014 - 10:28am



**PART 2 - MECHANICAL FLOOR PLAN**

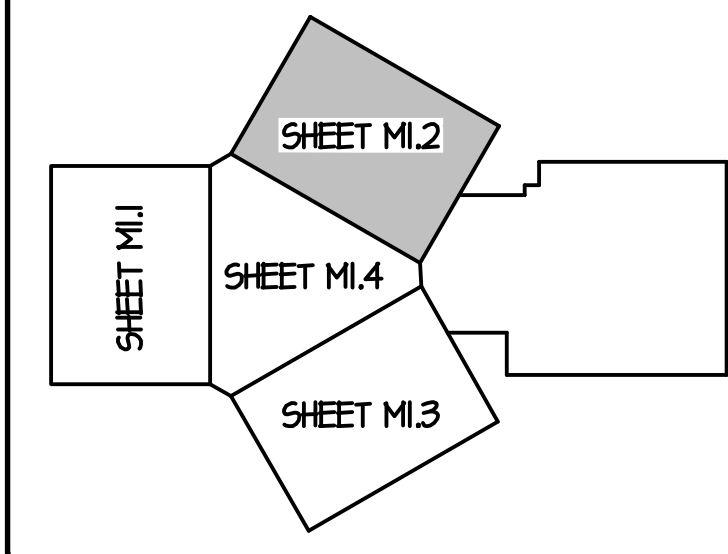
SCALE: 1/8" = 1'-0"



**PLAN NOTES:**

- 1 EXISTING CEILING MOUNTED UNIT HEATER TO REMAIN. REMOVE ALL PNEUMATIC CONTROLS FROM EXISTING UNIT AND PROVIDE NEW DIGITAL CONTROLS AS REQUIRED FOR NEW BUILDING DDG SYSTEM. CONTRACTOR TO FIELD VERIFY EXACT LOCATIONS OF EXISTING EQUIPMENT. REMOVE ALL EXISTING PNEUMATIC TUBING IN BUILDING WHERE ACCESSIBLE. REPLACE EXISTING WALL MOUNTED THERMOSTAT WITH NEW DIGITAL SENSOR AND CONNECT TO EXISTING UNIT HEATER AND TO NEW BUILDING CONTROL SYSTEM. SEE SPECIFICATIONS.
- 2 BASE BID: REPLACE EXISTING VAV BOX AND HOT WATER RE-HEAT COIL WITH NEW AS SPECIFIED. REPLACE EXISTING FLEX HOSES AT EACH UNIT. EXTEND EXISTING HIGH PRESSURE DUCT AND LOW PRESSURE DUCTS AS REQUIRED FOR CONNECTION TO NEW EQUIPMENT. EXTEND EXISTING HYDRONIC PIPING AS REQUIRED FOR NEW COIL LOCATION. REMOVE ALL PNEUMATIC CONTROLS FROM EXISTING BOX AND PROVIDE NEW DIGITAL CONTROLS AS REQUIRED FOR NEW BUILDING DDG SYSTEM. SEE SPECIFICATIONS. CONTRACTOR TO FIELD VERIFY EXISTING CONDITIONS, SIZES AND LOCATIONS OF EXISTING PIPING AND DUCTWORK, AND SPACE AVAILABLE ABOVE CEILINGS. CONTRACTOR TO FIELD VERIFY EXACT LOCATIONS OF EXISTING EQUIPMENT. REMOVE ALL EXISTING PNEUMATIC TUBING IN BUILDING WHERE ACCESSIBLE.  
ALTERNATE BID ITEM #3: MOUNT NEW VAV BOX JUST ABOVE CEILINGS UNDER ALTERNATE BID. EXTEND HIGH PRESSURE AND LOW PRESSURE DUCTWORK DOWN AS REQUIRED TO CONNECT FOR NEW BOX LOCATION. EXTEND HYDRONIC PIPING DOWN TO NEW BOX LOCATION. CONTRACTOR TO FIELD VERIFY ALL EXISTING PIPING AND DUCT SIZES AND SPACE AVAILABLE FOR NEW BOX LOCATIONS.
- 3 RE-BALANCE EXISTING DIFFUSER TO CFM AS SHOWN. FIELD VERIFY EXISTING CONDITIONS.
- 4 DISCONNECT AND REMOVE EXISTING WALL MOUNTED PNEUMATIC THERMOSTAT. ABANDON CONTROL TUBING IN WALLS. PROVIDE AND INSTALL NEW WALL MOUNTED DIGITAL ROOM SENSOR. RISE CONTROL WIRING UP IN WALLS TO ABOVE CEILINGS AND CONNECT TO CORRESPONDING VAV BOX WITH RE-HEAT COIL. CONTRACTOR TO FIELD VERIFY EXACT LOCATIONS OF EXISTING EQUIPMENT.
- 5 EXISTING SUPPLY AND RETURN DUCTWORK ABOVE CEILINGS TO REMAIN UNLESS NOTED OTHERWISE. CONTRACTOR TO FIELD VERIFY EXISTING CONDITIONS AND SIZES AND LOCATIONS OF ALL EXISTING DUCTWORK.
- 6 PROVIDE AND INSTALL NEW 3-WAY CONTROL VALVE IN HYDRONIC PIPING AT THIS LOCATION. CONNECT TO CONTROL SYSTEM.

**KEY PLAN:**



ORIGINAL DRAWING SIGNED BY: DWAYNE C. SUDNEEKS  
 DATE ORIGINAL SIGNED: Feb 15, 2014  
 ORIGINAL ON FILE AT ENGINEERED SYSTEMS ASSOCIATES  
 1355 EAST CENTER, POCA TELLO, IDAHO 83201

PROFESSIONAL ENGINEER  
REGISTERED  
5762  
STATE OF IDAHO  
DWAYNE C. SUDNEEKS

**Engineered Systems Associates**  
 1355 EAST CENTER  
 POCA TELLO, IDAHO 83201  
 PHONE: (208) 233-0501  
 FAX: (208) 233-0529  
 EMAIL: esa@engsystems.com  
 ESA JOB NUMBER: 16050

BRENT A. MCFARLAND AR-2561

STATE OF IDAHO

1152 BOND AVENUE - SUITE A REGBURG, IDAHO 83440  
 WWW.TRMA.COM VOICE (208) 359-2009 FAX (208) 359-2271

CONSULTANTS:

MECHANICAL ENGINEERING  
 ENGINEERED SYSTEMS ASSOC.  
 1355 East Center  
 Pocatello, Idaho 83201  
 (208) 233-0501  
 Fax (801) 233-0529

ELECTRICAL ENGINEERING  
 PAYNE ENGINEERING INC.  
 1823 E. Center St.  
 Pocatello, Idaho 83201  
 (208) 232-4439  
 Fax (208) 232-1435

---

PROJECT: MADISON MIDDLE SCHOOL A/C  
 MADISON COUNTY SCHOOL DISTRICT # 321  
 REGBURG, IDAHO

DRAWING TITLE: **PART 2 - MECHANICAL FLOOR PLAN**

---

REVISION:

#	DATE	COMMENT

DRAWN BY: M JENSEN      JOB NO: 746  
 CHECKED BY:      DATE:      FEB 2014  
 PLOT DATE: Feb 15, 2014

DRAWING NO. FILE: 16050-M1.2.dwg  
M1.2

OF 7