

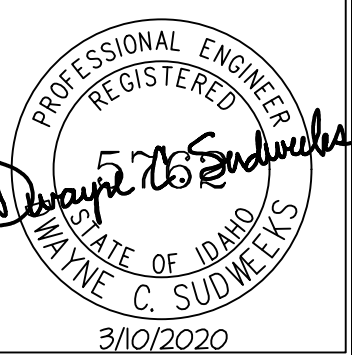


Engineered Systems Associates
Mechanical Engineers

Dwayne Sudweeks - Ron Rice
 1355 East Center - Pocatello, Idaho 83201
 Phone: (208) 233-0501 Fax: (208) 233-0529 email: esa@engsystems.com

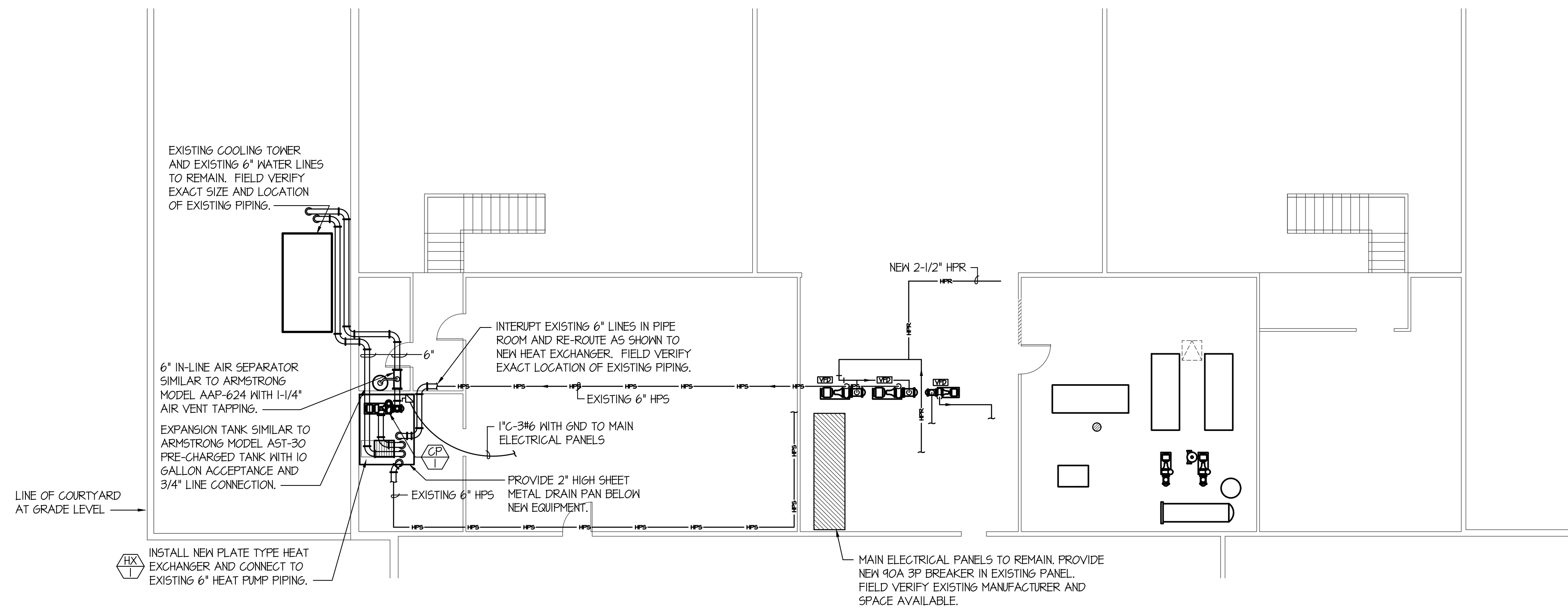
COOLING TOWER HEAT EXCHANGER FOR:
MADISON Jr. HIGH SCHOOL
 MADISON COUNTY SCHOOL DISTRICT #321 - REXBURG, IDAHO

PARTIAL UPPER FLOOR PLAN & PIPING DIAGRAM



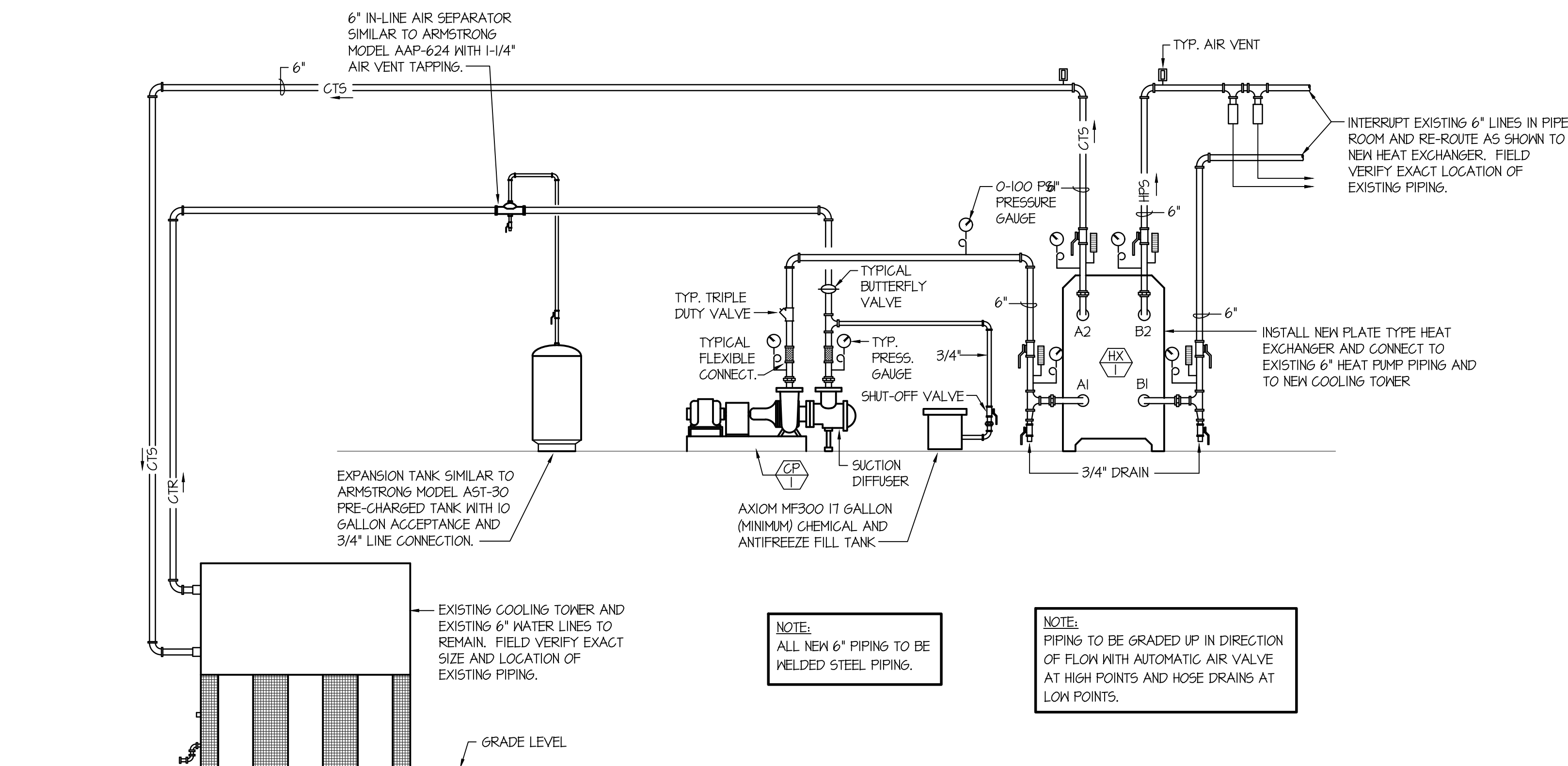
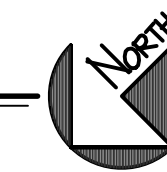
DRWN. BY: M. JENSEN
 CKD. BY: D. SUDWECKS
 JOB NO.: 12052
 DATE: MAR 2020

SHEET: ME-1
 OF: ONE



PARTIAL UPPER LEVEL FLOOR PLAN - MECHANICAL

SCALE: 1/8" = 1'-0"



NOTE:
 ALL NEW 6" PIPING TO BE WELDED STEEL PIPING.

NOTE:
 PIPING TO BE GRADED UP IN DIRECTION OF FLOW WITH AUTOMATIC AIR VALVE AT HIGH POINTS AND HOSE DRAINS AT LOW POINTS.

EQUIPMENT LIST	
SYMBOL	DESCRIPTION
	PLATE TYPE HEAT EXCHANGER - B46 MODEL P22 WITH 6' LINE CONNECTIONS. COOLING TOWER SIDE TO HAVE 40% GLYCOL MIX. 460 GPM FLOW, 45°F INLET TEMP., 75°F OUTLET TEMP., AND 5 PSI MAXIMUM PRESSURE DROP. HEAT PUMP SIDE TO HAVE 100% WATER, 575 GPM FLOW, 51°F INLET TEMP., 65°F OUTLET TEMP., AND 5 PSI MAXIMUM PRESSURE DROP.
	BASE MOUNTED CIRCULATING PUMP - B46 SERIES 1510, SIZE 3EB WITH 15 HORSEPOWER MOTOR WITH 208/160/3 POWER, 460 GPM FLOW AT 60' HEAD. (SIZED FOR 40% GLYCOL MIXTURE.) PROVIDE COMBINATION STARTER/DISCONNECT.

